



CHAMPION BEAR RESOURCES LTD.



Advancing Plomp Farm Gold Deposit and drilling Eagle Rock Cu-PGM project for Initial Mineral Resource Estimate



Infill Drilling Program ~5,000 meters plus re-sampling ~35,000 meters of unsplit historical core from 125 drill holes on Plomp Farm Au deposit



Infill Drilling Program ~2,000 meters and conducting airborne survey moving towards 2018 Initial Mineral Resource Estimate at Eagle Rock Cu-Pd-Ni-Pt-Au-Co-Ag project (Multi-phase sanukitoid intrusive complex)

March 2018



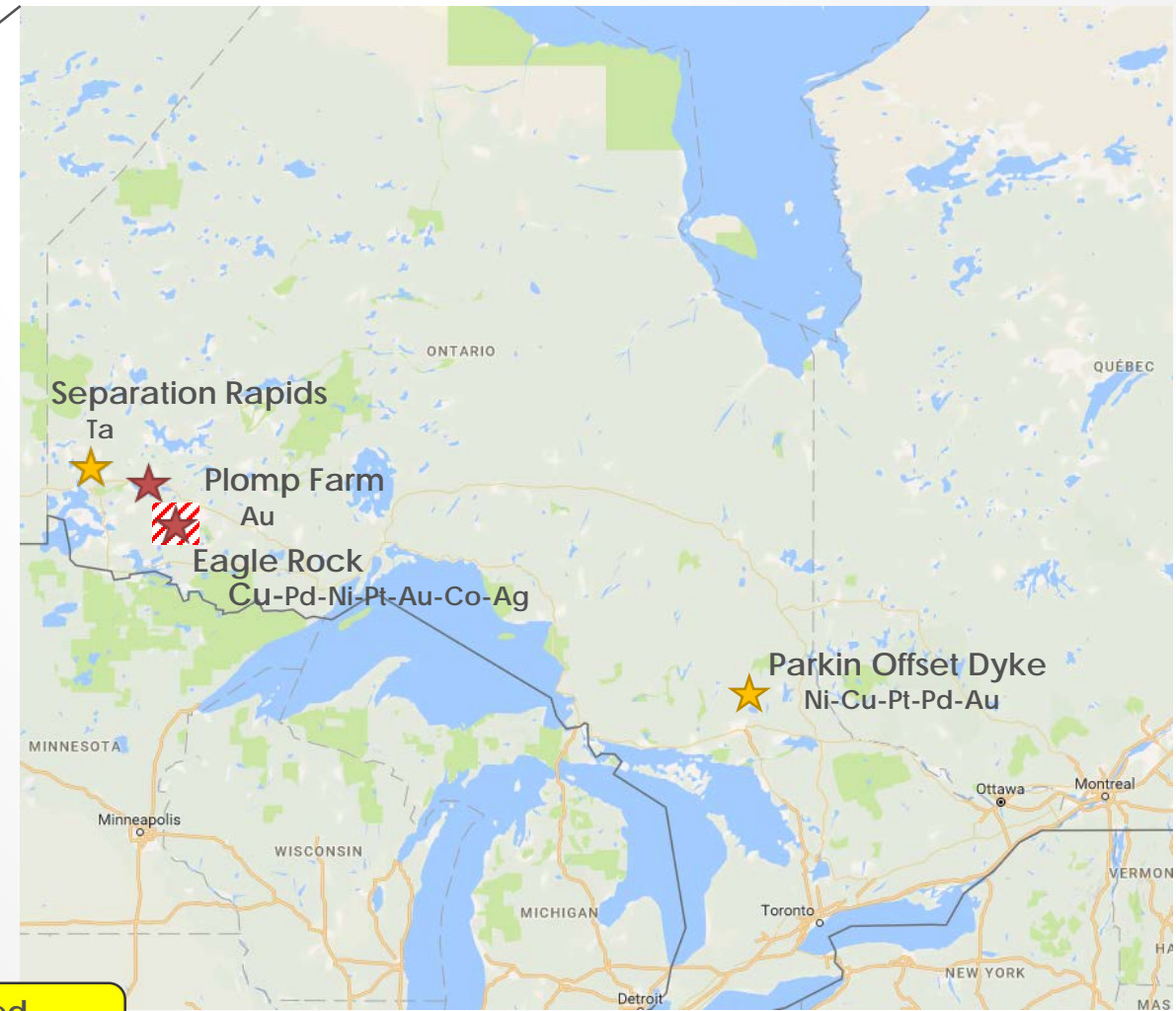
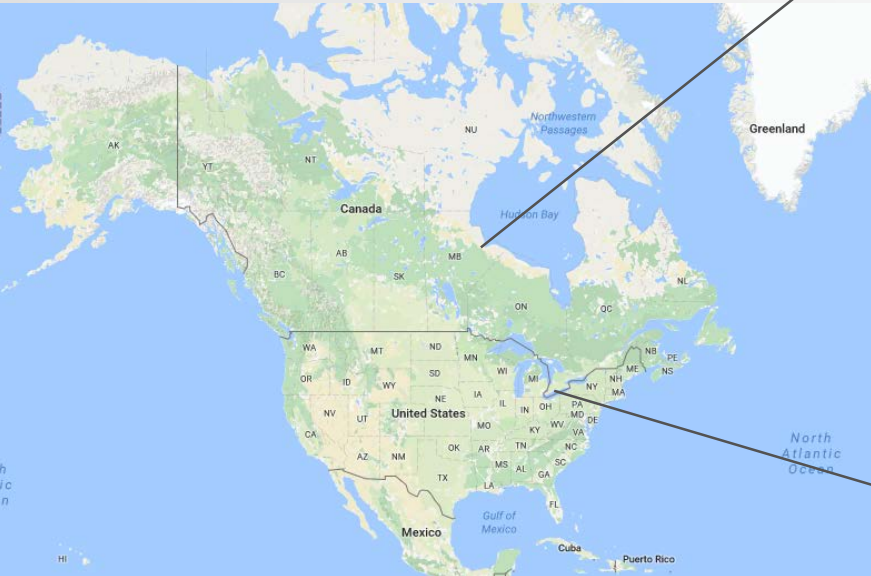
CAUTIONARY STATEMENT ON FORWARD-LOOKING INFORMATION

CERTAIN INFORMATION CONTAINED IN THIS PRESENTATION, INCLUDING ANY INFORMATION AS TO OUR STRATEGY, PROJECTS, PLANS OR FUTURE FINANCIAL OR OPERATING PERFORMANCE, CONSTITUTES "FORWARD-LOOKING STATEMENTS". ALL STATEMENTS, OTHER THAN STATEMENTS OF HISTORICAL FACT, ARE FORWARD-LOOKING STATEMENTS. THE WORDS "BELIEVE", "EXPECT", "ANTICIPATE", "CONTEMPLATE", "TARGET", "PLAN", "OBJECTIVE", "ASPIRATION", "AIM", "INTEND", "PROJECT", "GOAL", "CONTINUE", "BUDGET", "ESTIMATE", "POTENTIAL", "MAY", "WILL", "CAN", "SHOULD", "COULD", "WOULD" AND SIMILAR EXPRESSIONS IDENTIFY FORWARD-LOOKING STATEMENTS. IN PARTICULAR, THIS PRESENTATION CONTAINS FORWARD-LOOKING STATEMENTS INCLUDING, WITHOUT LIMITATION, WITH RESPECT TO: (I) CHAMPION BEAR'S FORWARD-LOOKING PRODUCTION GUIDANCE; (II) ESTIMATES OF FUTURE ALL-IN-SUSTAINING COSTS PER OUNCE; (III) CASH FLOW FORECASTS; (IV) PROJECTED CAPITAL, OPERATING AND EXPLORATION EXPENDITURES; (V) TARGETED DEBT AND COST REDUCTIONS; (VI) MINE LIFE AND PRODUCTION RATES; (VII) POTENTIAL MINERALIZATION AND METAL OR MINERAL RECOVERIES; (VIII) TIMING AND COMPLETION OF ACQUISITIONS; (IX) NON-CORE ASSET SALES OR JOINT VENTURES; (X) EXPECTATIONS REGARDING FUTURE PRICE ASSUMPTIONS, FINANCIAL PERFORMANCE AND OTHER OUTLOOK OR GUIDANCE; AND (XI) THE ESTIMATED TIMING AND CONCLUSIONS OF TECHNICAL REPORTS AND OTHER STUDIES. FORWARD-LOOKING STATEMENTS ARE NECESSARILY BASED UPON A NUMBER OF ESTIMATES AND ASSUMPTIONS, INCLUDING MATERIAL ESTIMATES AND ASSUMPTIONS RELATED TO THE FACTORS SET FORTH BELOW THAT, WHILE CONSIDERED REASONABLE BY THE COMPANY AS AT THE DATE OF THIS PRESENTATION IN LIGHT OF MANAGEMENT'S EXPERIENCE AND PERCEPTION OF CURRENT CONDITIONS AND EXPECTED DEVELOPMENTS, ARE INHERENTLY SUBJECT TO SIGNIFICANT BUSINESS, ECONOMIC AND COMPETITIVE UNCERTAINTIES AND CONTINGENCIES. KNOWN AND UNKNOWN FACTORS COULD CAUSE ACTUAL RESULTS TO DIFFER MATERIALLY FROM THOSE PROJECTED IN THE FORWARD-LOOKING STATEMENTS AND UNDUE RELIANCE SHOULD NOT BE PLACED ON SUCH STATEMENTS AND INFORMATION. SUCH FACTORS INCLUDE, BUT ARE NOT LIMITED TO: FLUCTUATIONS IN THE SPOT AND FORWARD PRICE OF GOLD, COPPER OR CERTAIN OTHER COMMODITIES (SUCH AS SILVER, DIESEL FUEL, NATURAL GAS AND ELECTRICITY); THE SPECULATIVE NATURE OF MINERAL EXPLORATION AND DEVELOPMENT; CHANGES IN MINERAL PRODUCTION PERFORMANCE, EXPLOITATION AND EXPLORATION SUCCESSES; RISKS ASSOCIATED WITH THE STUDIES STILL IN THE EARLY STAGES OF EVALUATION AND ADDITIONAL ENGINEERING AND OTHER ANALYSIS IS REQUIRED TO FULLY ASSESS THEIR IMPACT; DIMINISHING QUANTITIES OR GRADES OF RESERVES; INCREASED COSTS, DELAYS, SUSPENSIONS AND TECHNICAL CHALLENGES ASSOCIATED WITH THE CONSTRUCTION OF CAPITAL PROJECTS; OPERATING OR TECHNICAL DIFFICULTIES IN CONNECTION WITH MINING OR DEVELOPMENT ACTIVITIES, INCLUDING GEOTECHNICAL CHALLENGES AND DISRUPTIONS IN THE MAINTENANCE OR PROVISION OF REQUIRED INFRASTRUCTURE AND INFORMATION TECHNOLOGY SYSTEMS; FAILURE TO COMPLY WITH ENVIRONMENTAL AND HEALTH AND SAFETY LAWS AND REGULATIONS; TIMING OF RECEIPT OF, OR FAILURE TO COMPLY WITH, NECESSARY PERMITS AND APPROVALS; UNCERTAINTY WHETHER SOME OR ALL OF THE STUDIES AND INVESTMENTS TARGETED BY CHAMPION BEAR WILL MEET THE COMPANY'S CAPITAL ALLOCATION OBJECTIVES; THE IMPACT OF GLOBAL LIQUIDITY AND CREDIT AVAILABILITY ON THE TIMING OF CASH FLOWS AND THE VALUES OF ASSETS AND LIABILITIES BASED ON PROJECTED FUTURE CASH FLOWS; ADVERSE CHANGES IN OUR CREDIT RATINGS; THE IMPACT OF INFLATION; FLUCTUATIONS IN THE CURRENCY MARKETS; CHANGES IN INTEREST RATES; RISKS ARISING FROM HOLDING DERIVATIVE INSTRUMENTS; CHANGES IN NATIONAL AND LOCAL GOVERNMENT LEGISLATION, TAXATION, CONTROLS OR REGULATIONS AND/OR CHANGES IN THE ADMINISTRATION OF LAWS, POLICIES AND PRACTICES, EXPROPRIATION OR NATIONALIZATION OF PROPERTY AND POLITICAL OR ECONOMIC DEVELOPMENTS IN CANADA WHICH THE COMPANY DOES CARRY ON BUSINESS IN THE FUTURE; LACK OF CERTAINTY WITH RESPECT TO DOMESTIC LEGAL SYSTEMS, CORRUPTION AND OTHER FACTORS THAT ARE INCONSISTENT WITH THE RULE OF LAW; DAMAGE TO THE COMPANY'S REPUTATION DUE TO THE ACTUAL OR PERCEIVED OCCURRENCE OF ANY NUMBER OF EVENTS, INCLUDING NEGATIVE PUBLICITY WITH RESPECT TO THE COMPANY'S HANDLING OF ENVIRONMENTAL MATTERS OR DEALINGS WITH COMMUNITY GROUPS, WHETHER TRUE OR NOT; RISK OF LOSS DUE TO ACTS OF WAR, TERRORISM, SABOTAGE AND CIVIL DISTURBANCES; LITIGATION; CONTESTS OVER TITLE TO PROPERTIES, PARTICULARLY TITLE TO UNDEVELOPED PROPERTIES, OR OVER ACCESS TO WATER, POWER AND OTHER REQUIRED INFRASTRUCTURE; BUSINESS OPPORTUNITIES THAT MAY BE PRESENTED TO, OR PURSUED BY, THE COMPANY; OUR ABILITY TO SUCCESSFULLY INTEGRATE ACQUISITIONS OR COMPLETE DIVESTITURES; RISKS ASSOCIATED WITH WORKING WITH PARTNERS IN JOINTLY CONTROLLED ASSETS; EMPLOYEE RELATIONS INCLUDING LOSS OF KEY EMPLOYEES; INCREASED COSTS AND PHYSICAL RISKS, INCLUDING EXTREME WEATHER EVENTS AND RESOURCE SHORTAGES, RELATED TO CLIMATE CHANGE; AVAILABILITY AND INCREASED COSTS ASSOCIATED WITH MINING INPUTS AND LABOR. IN ADDITION, THERE ARE RISKS AND HAZARDS ASSOCIATED WITH THE BUSINESS OF MINERAL EXPLORATION, DEVELOPMENT AND MINING, INCLUDING ENVIRONMENTAL HAZARDS, INDUSTRIAL ACCIDENTS, UNUSUAL OR UNEXPECTED FORMATIONS, PRESSURES, CAVE-INS, FLOODING AND GOLD BULLION, COPPER CATHODE OR GOLD OR COPPER OR PGM OR RARE EARTH CONCENTRATE LOSSES (AND THE RISK OF INADEQUATE INSURANCE, OR INABILITY TO OBTAIN INSURANCE, TO COVER THESE RISKS). MANY OF THESE UNCERTAINTIES AND CONTINGENCIES CAN AFFECT OUR ACTUAL RESULTS AND COULD CAUSE ACTUAL RESULTS TO DIFFER MATERIALLY FROM THOSE EXPRESSED OR IMPLIED IN ANY FORWARD-LOOKING STATEMENTS MADE BY, OR ON BEHALF OF, US. READERS ARE CAUTIONED THAT FORWARD-LOOKING STATEMENTS ARE NOT GUARANTEES OF FUTURE PERFORMANCE. ALL OF THE FORWARD-LOOKING STATEMENTS MADE IN THIS PRESENTATION ARE QUALIFIED BY THESE CAUTIONARY STATEMENTS. SPECIFIC REFERENCE IS MADE TO THE MOST RECENT MD&A FORM AND AUDITED YEAR END FINANCIAL STATEMENTS ON FILE WITH THE CANADIAN PROVINCIAL SECURITIES REGULATORY AUTHORITIES FOR A MORE DETAILED DISCUSSION OF SOME OF THE FACTORS UNDERLYING FORWARD-LOOKING STATEMENTS AND THE RISKS THAT MAY AFFECT CHAMPION BEAR'S ABILITY TO ACHIEVE THE EXPECTATIONS SET FORTH IN THE FORWARD-LOOKING STATEMENTS CONTAINED IN THIS PRESENTATION. THE COMPANY DISCLAIMS ANY INTENTION OR OBLIGATION TO UPDATE OR REVISE ANY FORWARD-LOOKING STATEMENTS WHETHER AS A RESULT OF NEW INFORMATION, FUTURE EVENTS OR OTHERWISE, EXCEPT AS REQUIRED BY APPLICABLE LAW.

CHAMPION BEAR'S PROJECTS



Plomp Farm VMS Deposit Core



 Initial Mineral Resource Estimate completed
 Initial Mineral Resource Estimate in progress



PROJECT SUMMARIES



- **The 2018 focus will be to expand the resource base**

- **Plomp Farm** – Hybrid VMS Gold Deposit. Folded/strained barite-enriched quartz-sericite-sulfide schist unit averaging 15m thick and sericitized felsic tuffs identified with wide spread, distinct Pathfinder elemental signatures. 2 OGS samples testing **1.72 and 2.98 ounces/t Au (53.5 and 92.7 g/t)**. **2.2 km strike length and mineralization to 900 meters TVD and Open on Strike and Depth**. Plan to drill infill **program -5,000 m along with re-sampling -35,000 meters of unsplit historical core**. **100% Interest in claims.**

- **Advancing to Initial Mineral Resource Estimate in 2018**

- **Eagle Rock** – Multi-phase sanukitoid intrusive complex host to Cu-Pd-Ni-Pt-Au-Co-Ag mineralization. **PGE dominated by Palladium up to 1.0 g/t**. Drill assays up to **2.19 g/t PGE+Au and 0.92% Cu+Ni over 5 meters** (part of wider interval grading 1.70 g/t TPM+Au and 0.87% Cu+Ni over 13 meters) on potential 12 km trend for Campbell Zone sulfides. Plan to drill **infill program -2,000 m for Initial Mineral Resource Estimate in 2018 and fly an airborne geophysical program**. **100% Interest in claims.**

- **Non-Operated 2018 Project**

- **Parkin Offset Dyke** – Metavolcanics within or adjacent to Parkin Offset dyke as high as **44 g/tonne Au over 1.4 m** at 543 meters, shallow BHUTEM and deep RIM anomalies identified in Sudbury Basin Offset dyke, **11.2% Cu, 9.2 g/t Pt, 4.3 g/t Pd and 1.6 g/t Au over 2.7 m** at surface (channel sample of Brady Showing). Non-operated JV activity throughout 2018 expected. 50% Carried Interest in claims converts to loan payable from production revenue.

- **Currently Unfunded, Operated Project**

- **Separation Rapids** – Petalite pegmatite zone directly east of Big Whopper deposit, area surface widths measured up to 170 meters and drilling results up to **1% Ta₂O₅, 0.097% Cs₂O, 0.77% Rb₂O, 1.26% SnO₂ and 0.43% Li₂O** - **Highest recorded Tantalum sample in Ontario(Ontario Geological Survey 2000)**. 100% Interest in claims. May fund 2018 activity based on success of equity raise.

- **Target Metals – Au, Pd, Pt, Cu, Ni, Co, Ag, Ta, Li**

- **Over \$20MM spent to date on all properties**

- **All claims in mining friendly, conflict free jurisdiction of Ontario, Canada with ~200 years of mining history.**

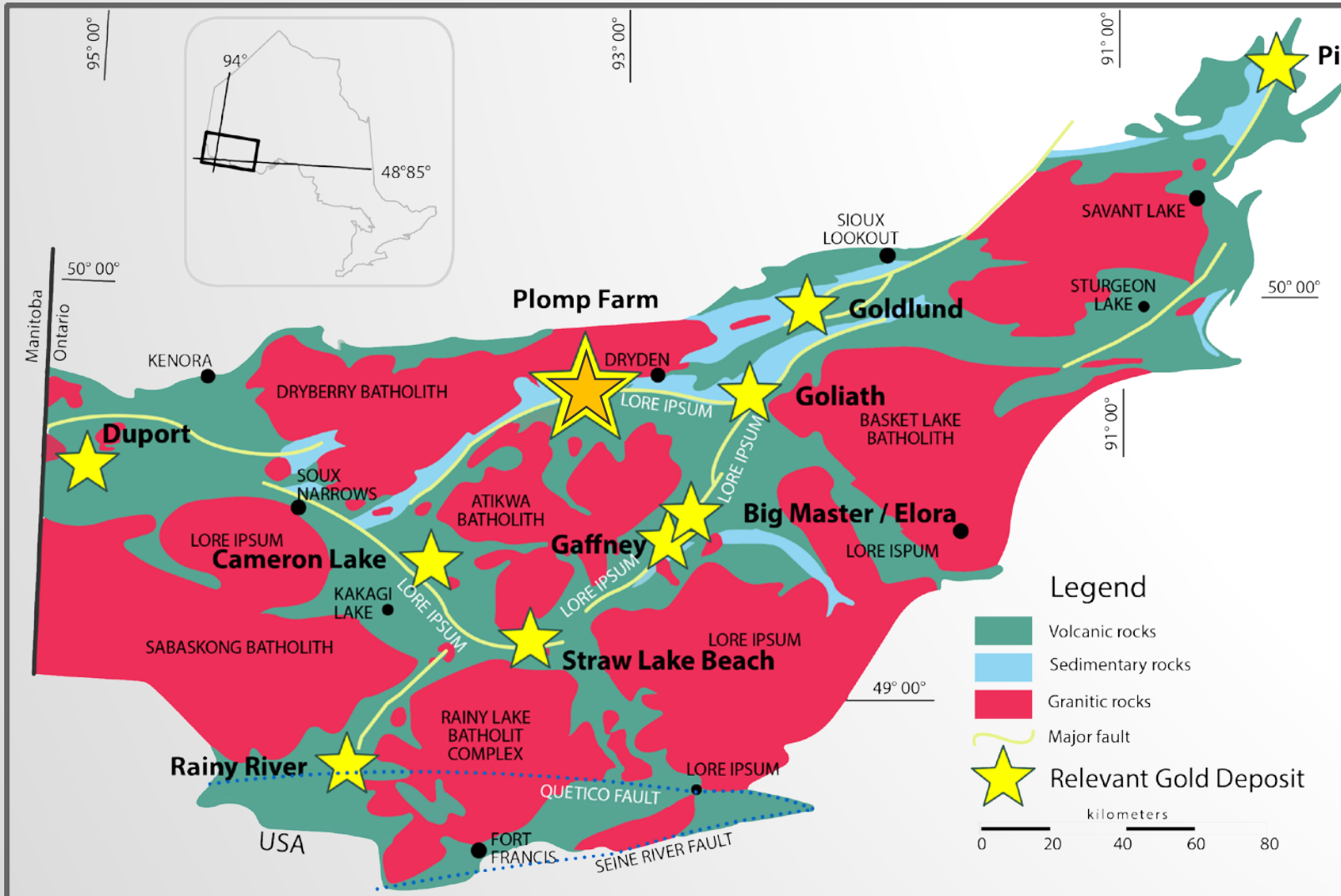
- **2018 activity to be funded through equity raise(s)**



PLOMP FARM QUARTZ SERICITE SCHIST

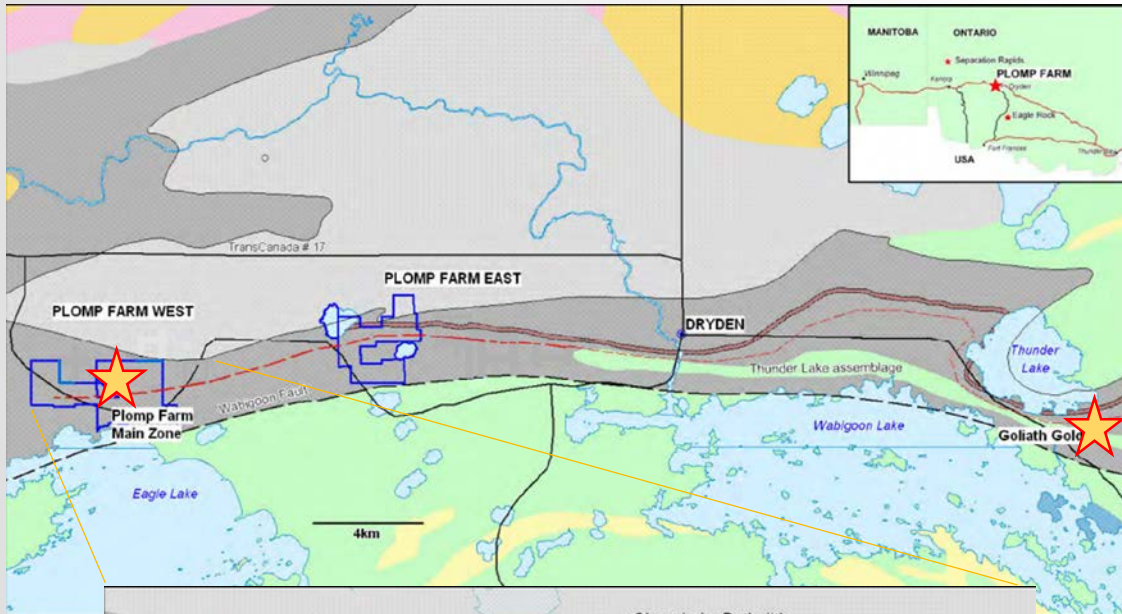


PLOMP FARM REGIONAL MAP



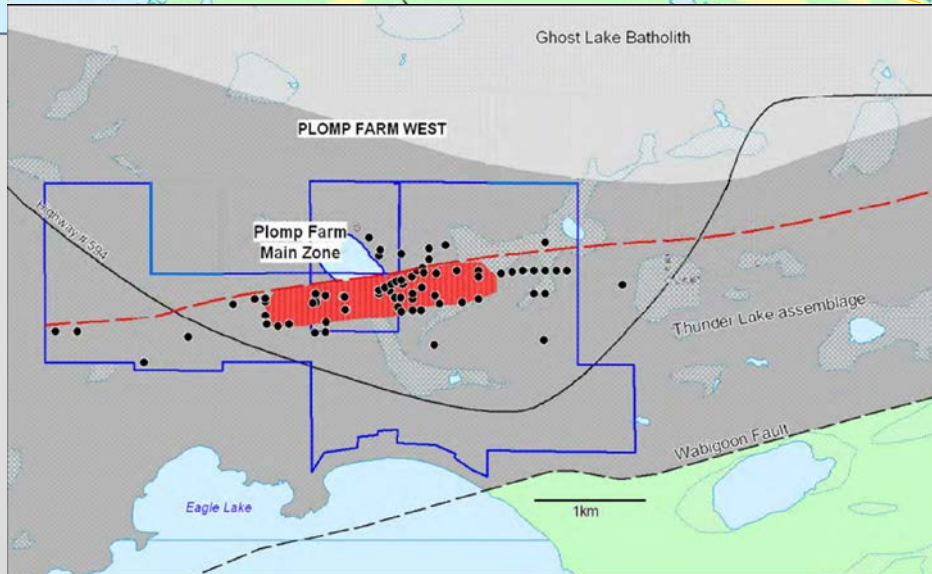
- ~50,000 meters of historical drilling from 125 drill holes and wedges (1994 to 2007)
- “Hemlo and LaRonde like” folded and strained quartz sericite schist Hybrid VMS Gold deposit
- Pathfinder Mineralization Fingerprint (elevated)
 - Ag, Cu, Zn, Pb, Ba, As, Sb, Hg, V, Co, Rb, Ce, Sr

PLOMP FARM OVERVIEW

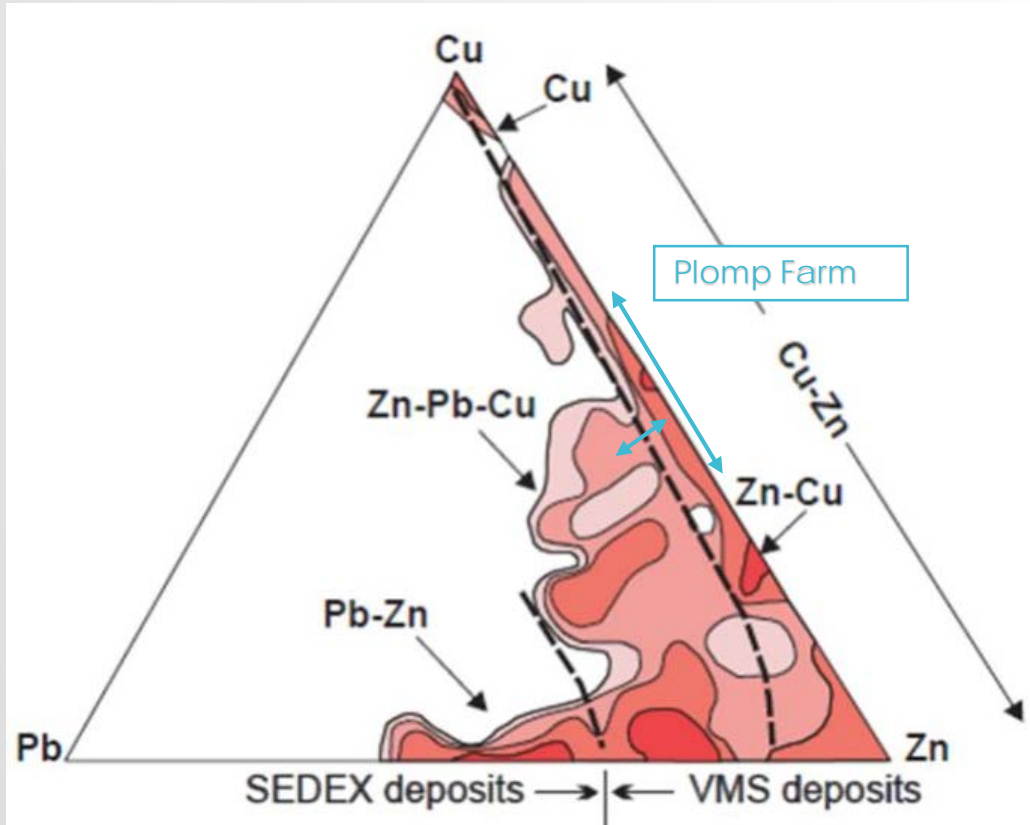


Plomp Farm – Hybrid VMS Gold deposit, Folded/sheared barite-enriched quartz-sericitic-sulfide schist unit averaging 15m thick and sericitized felsic tuffs, 2 OGS duplicate samples assayed **1.72 and 2.98 ounces/t Au (53.5 and 92.7 g/t)**. 2.2 km strike length and mineralization to 900 meters TVD. Mineralization open at depth and along strike.

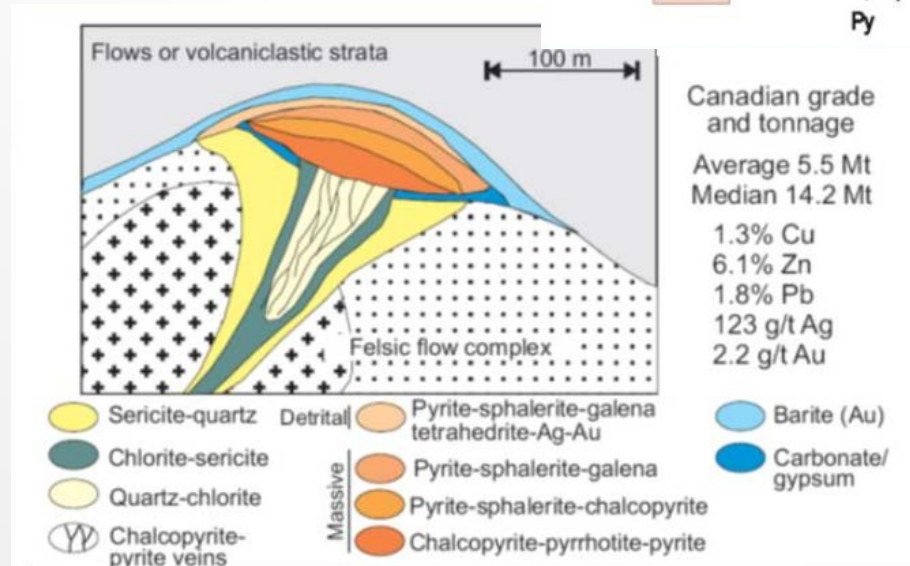
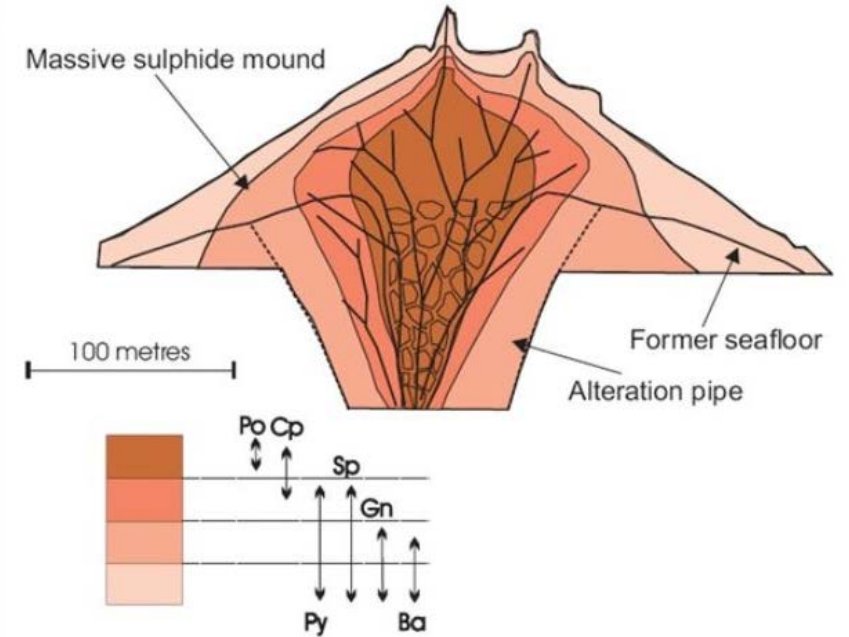
- ~4,000 acres 100% working interest claims
- 125 drill holes and wedges drilled to date (50,000 m of core), 1st drilled by INCO in 1970
- All weather paved highway passes through the project, connected to regional electrical grid and both rail and natural gas services less than 3 km north
- The Warclub Group, Thunder Lake assemblage of felsic metavolcanics and metasedimentary rocks hosts both the Plomp Farm Main Zone and **Treasury Metal's Goliath Gold deposit (M+I+I 1.4 million Oz Au @ 1.98 g/t)**- both occurring at similar stratigraphic levels within the assemblage.
- Similar geological features to New Gold Rainy River, Treasury Metals Goliath, Barrick Hemlo, Agnico Eagle LaRonde in Canada



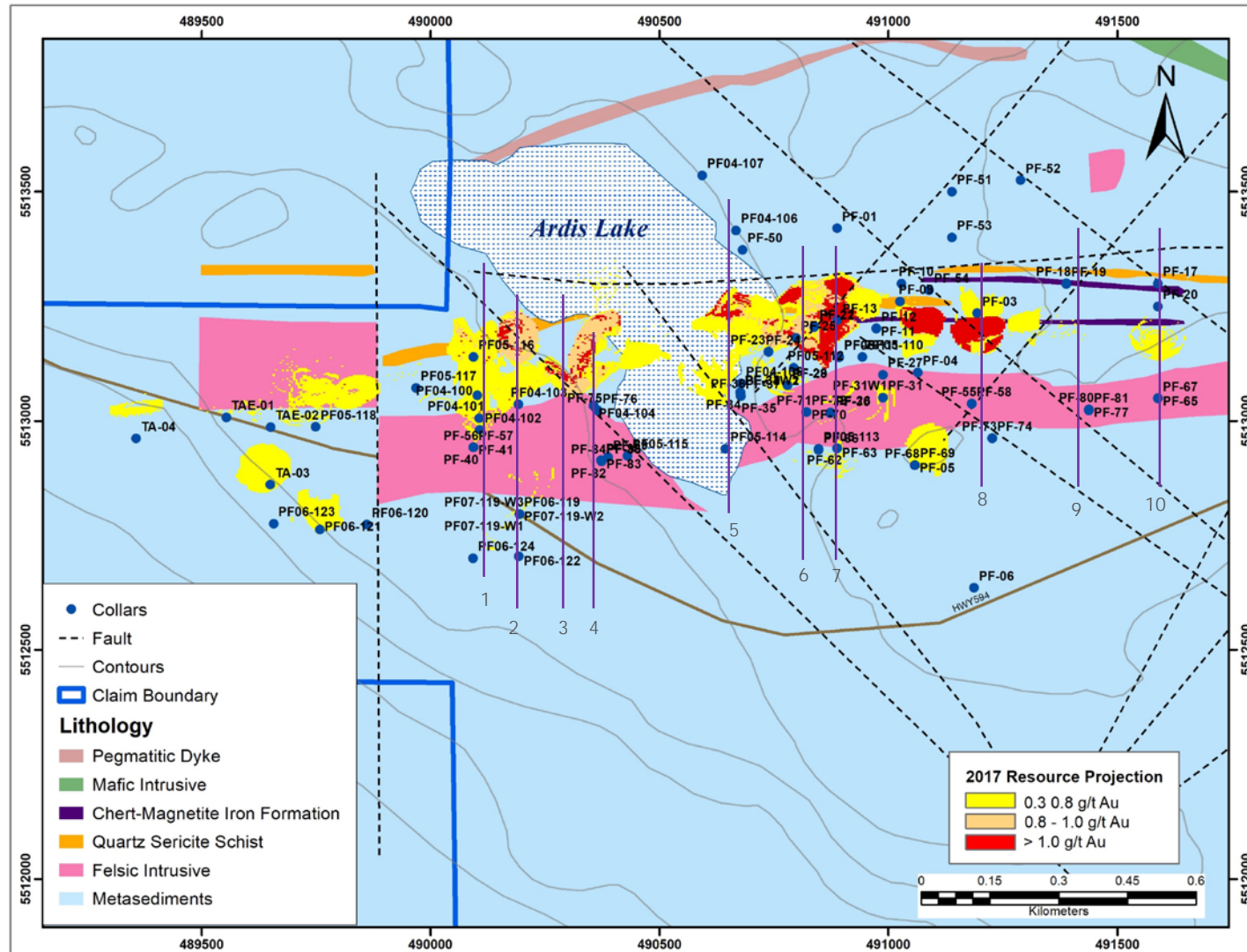
VMS FINGERPRINT AND ENVIRONMENT



World VMS (modified from Franklin 1996)



INITIAL MINERAL RESOURCE ASSESSMENT



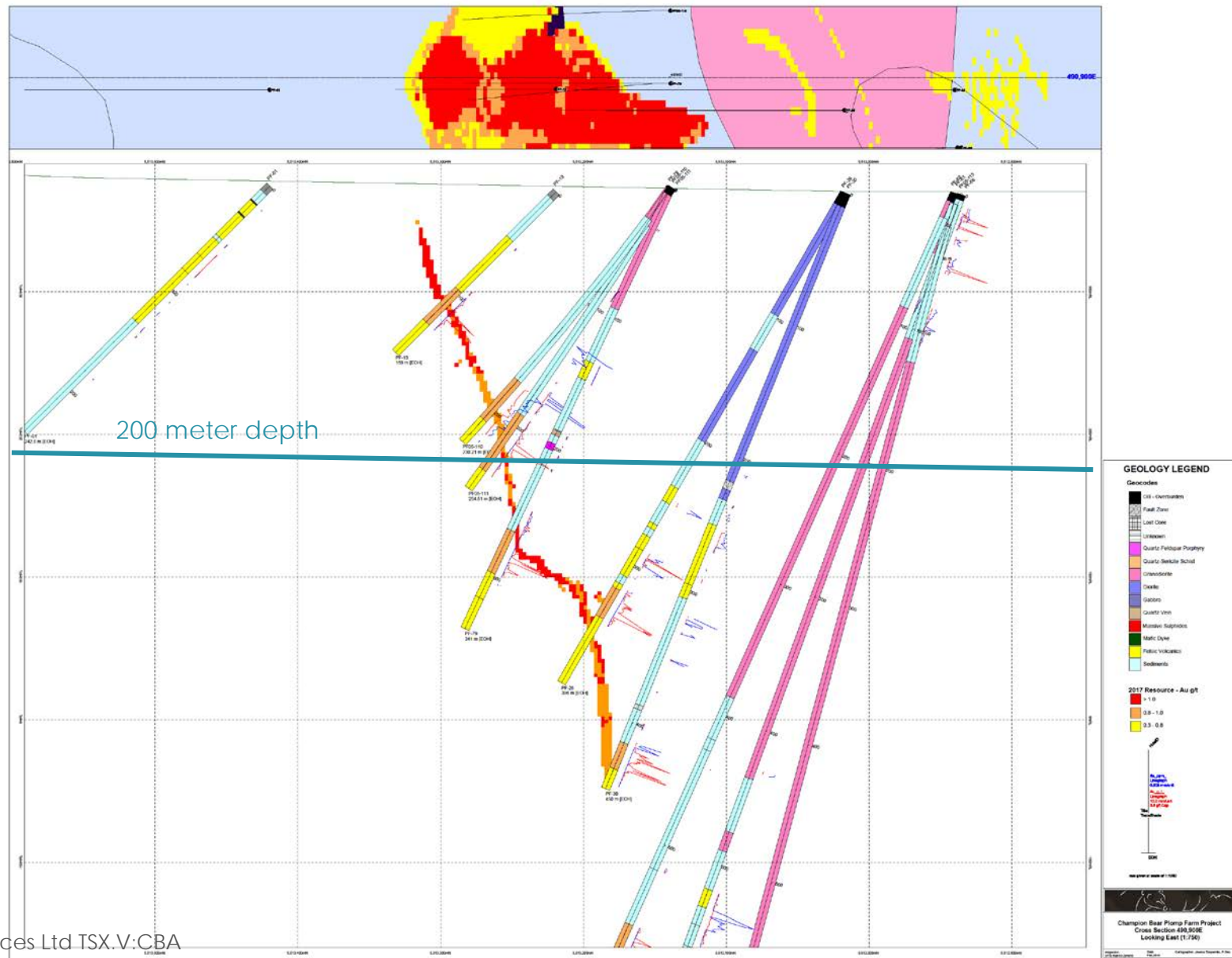
Mineral Resources

- Evaluated 600 meters of discontinuous strike and 200 meters of depth only in estimate
- Gold and Silver grades are improving with depth
- Hybrid VMS/Magmatic Hydrothermal Archean Load Gold deposit
- Pathfinder elemental suite observable across 2.2 km of strike
- QP Todd McCracken P.Ge. (WSP Canada Inc.)

Go Forward Plans for 2018

- Infill Drill up to 5,000 meters of diamond drill holes to
 - increase the evaluated strike length within the identified 2.2 km mineralization trend up from current 600 discontinuous meters (~25%)
 - drill deep holes to increase the sample density at depth below the currently evaluated depth of 200 meters. Company has sampled gold at depths to 904 meters and deposit remains open at depth
- Split and sample additional historical core containing the gold bearing quartz sericite schist and sericitized felsic tuffs

BLOCKS ON XSECTION 7



CROSS-SECTIONS – AU ENRICHED ENVELOPE WITH PATHFINDER MINERALIZATION



West
Xsection 4

550 meters

East
Xsection 7

4

200 meter depth

PF04-101
32 m

PF75
32 m Op

PF84
55 m

PF82
41 m

PF73
45 m Op

PF38
32 m

PF83
41 m

PF83
68 m

Au Mineralization
Envelope

Au Mineralization Envelope has Au ≥ 0.1 g/t
over multiple but not continuous zones in
drill core

Ba was rarely assayed between 1994 and
1996 drilling

7

200 meter depth

PF01
0 m

PF13
21 m

PF05-110
16 m

PF05-111
41 m

PF79
31 m

PF26
29 m

PF30
19 m

PF62
23 m

PF66
39 m

PF63
59 m

Au Mineralization
Envelope

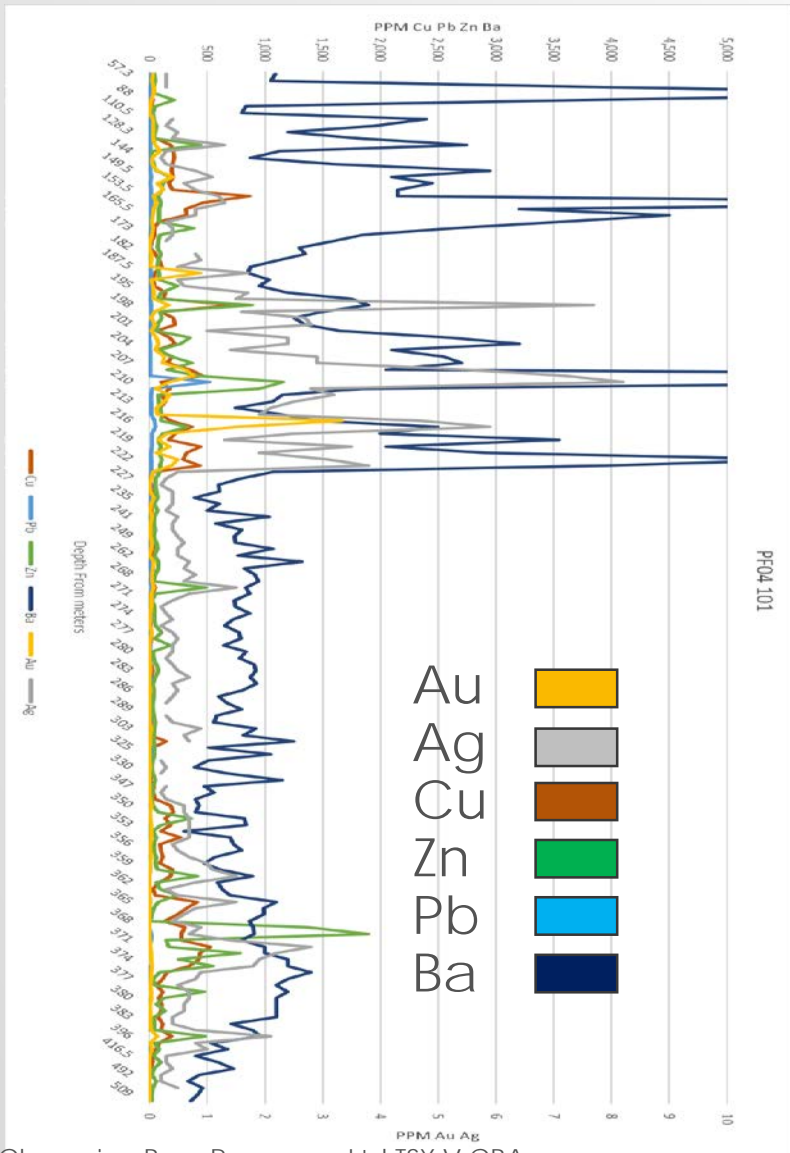
GEOLOGY LEGEND

- Geology
 - OP - Overlain
 - Fract Zone
 - Lead Zone
 - Unknown
 - Quartz Veinlet (Pathfinder)
 - Altered Sulfide Shell
 - Concretions
 - Clay
 - Siltstone
 - Sandstone
 - Shale
 - Basaltic Flow
 - Microcline
 - Red Clay
 - Fluvial Deposits
 - Sediments
- Assays - Au g/t
- 0.5
 - 0.5 - 1
 - 1 - 5
 - 5 - 10
 - 10 - 20
 - 20 - 50
- Assays - Ba ppm
- 1000
 - 1000 - 2000
 - 2000 - 3000
 - 3000

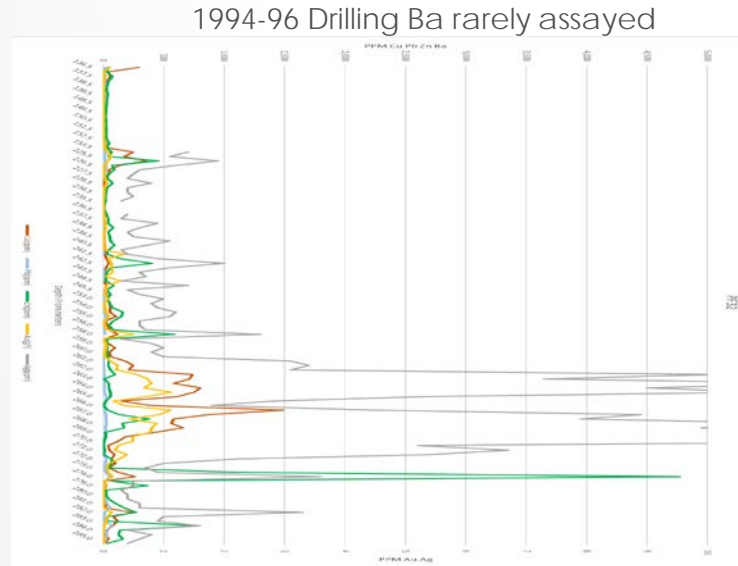
PATHFINDER MINERALIZATION



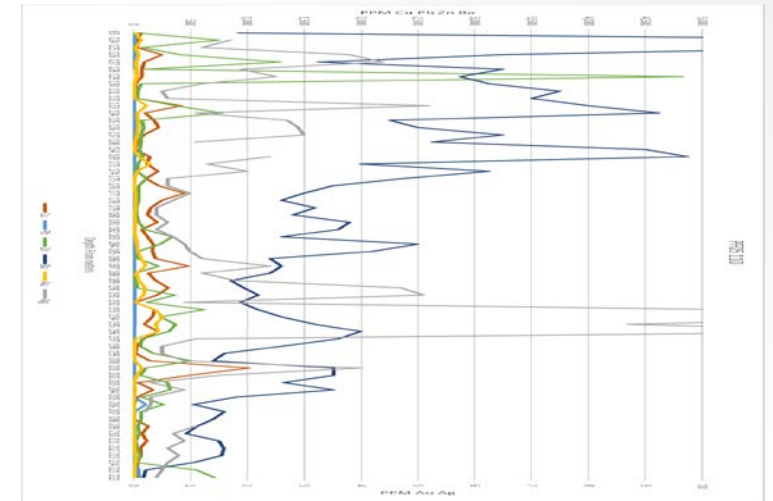
West PF04-101



Central PF32



East PF05-110



Pathfinder Mineralization Suite Averages

Cu>Zn 2.5:1
 Zn>Pb 8:1
 Ag>Au 18:1
 Pb>As 2:1
 Mo>Pb 1.5:1
 La>Sb 2:1

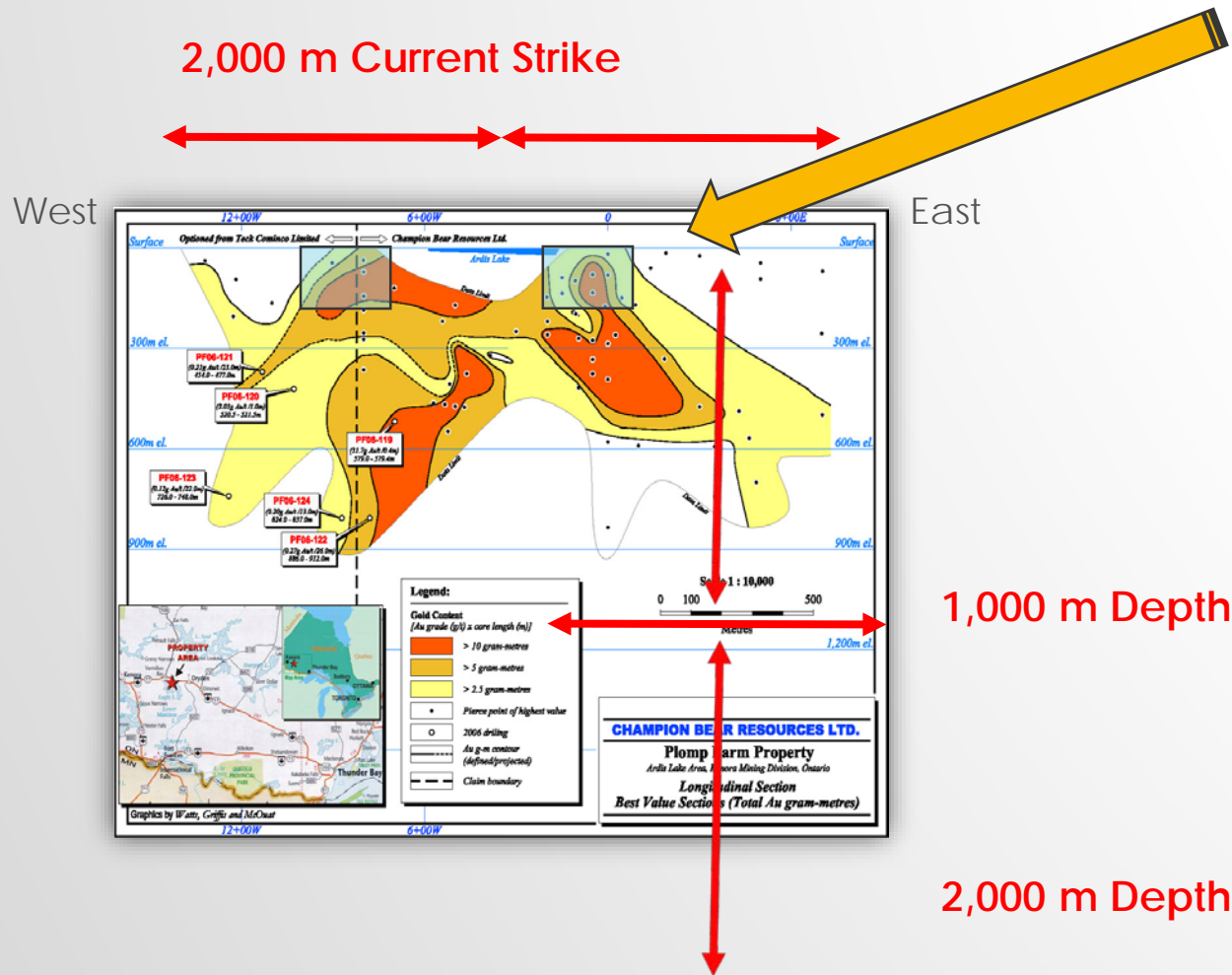
Pb=V
 Au=Hg
 Mo=Co=Sr
 Ag=Sb

Cu 1,510 ppm
 Zn 609
 Au 0.5
 Ag 10.2
 Ba ~2,000
 Fe ~4%
 K ~2.6%

Limited Drilling Shows Mineralization Open

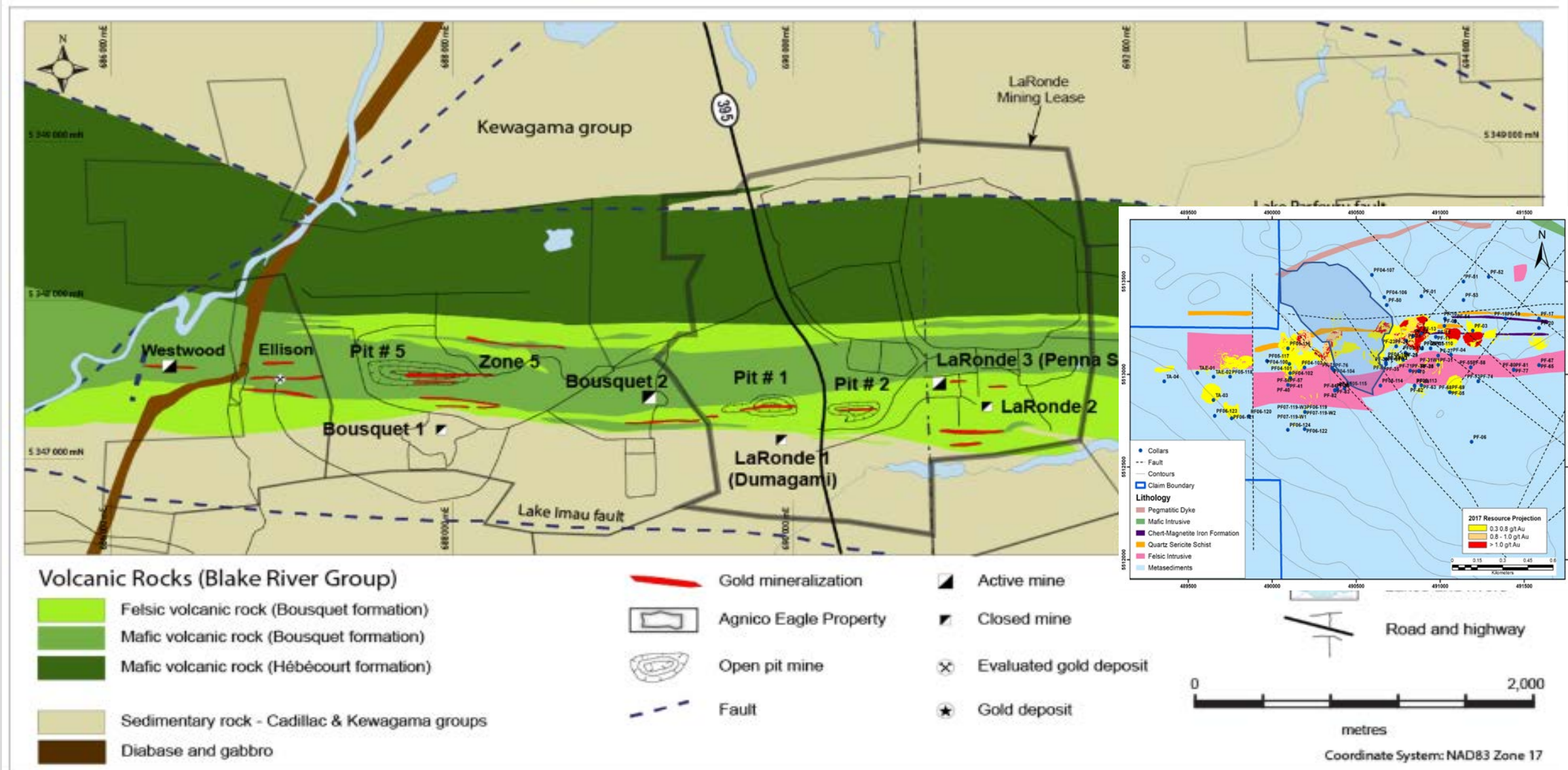


- Current Evaluations are to depths of 200 meters and 600 meters of discontinuous strike length approximately illustrated by the blue boxed area on the deposit cross-section
- Champion Bear has gold drilled and sampled to depths of 900 meters and the deposit remains open at depth and on strike.
- WSP noted that Au and Ag grade were identified as increasing with depth
- Future drilling programs will target a number of deeper holes to increase the confidence in the depth of the Plomp Farm deposit to increase both tonnage and grade



March 2018

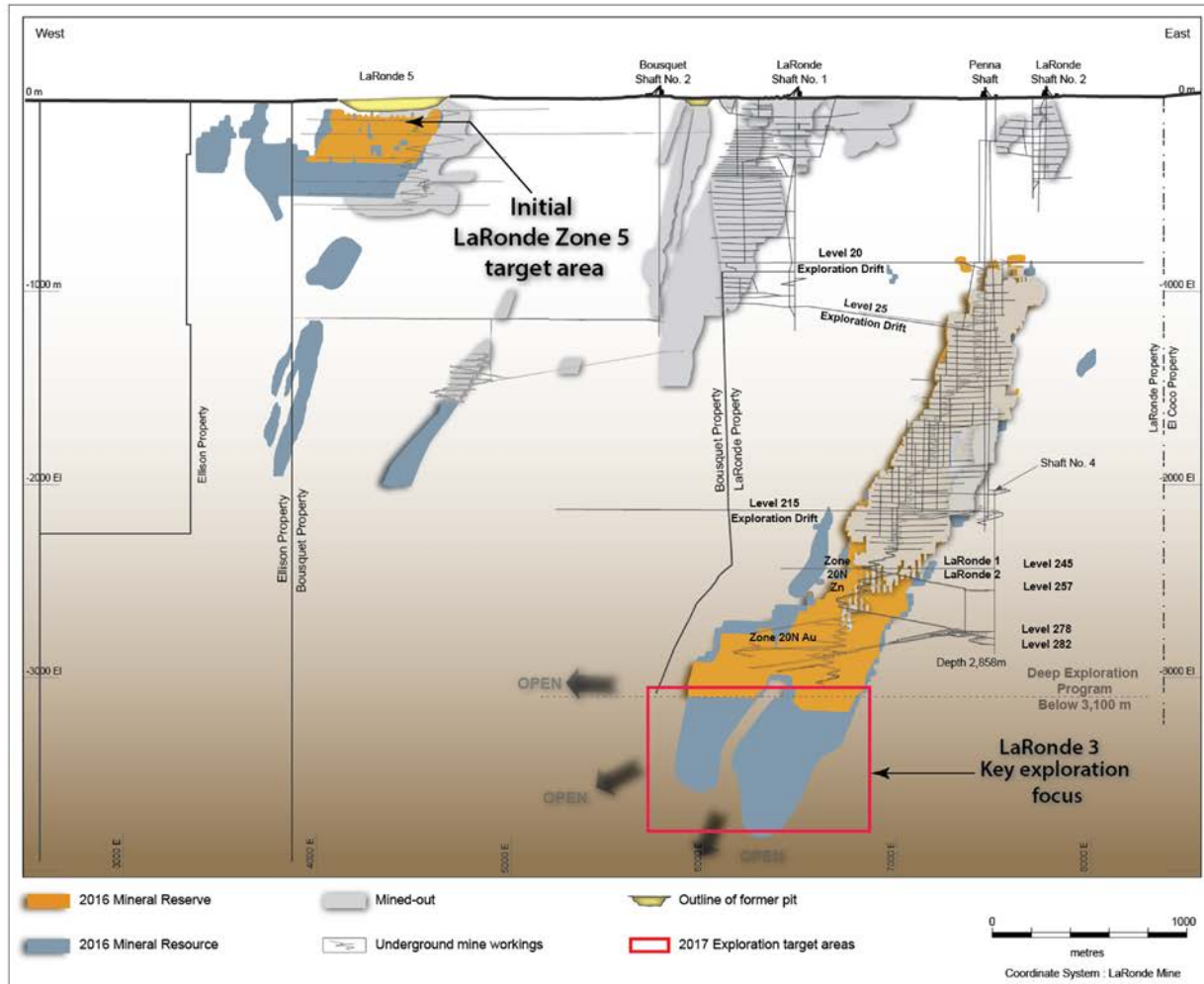
PLOMP FARM VS LARONDE



PLOMP FARM VS LARONDE

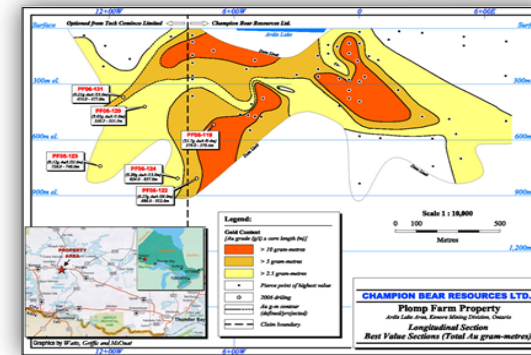


LaRonde Mine - Composite Longitudinal Section



West

East





PLOMP FARM VS HEMLO LONGITUDINAL SECTIONS



Barrick 2016 – Recent Exploration Success
30+ Years in Production, >22 MMoz Produced

Champion Bear
Limited Drilling, Mineralization Open

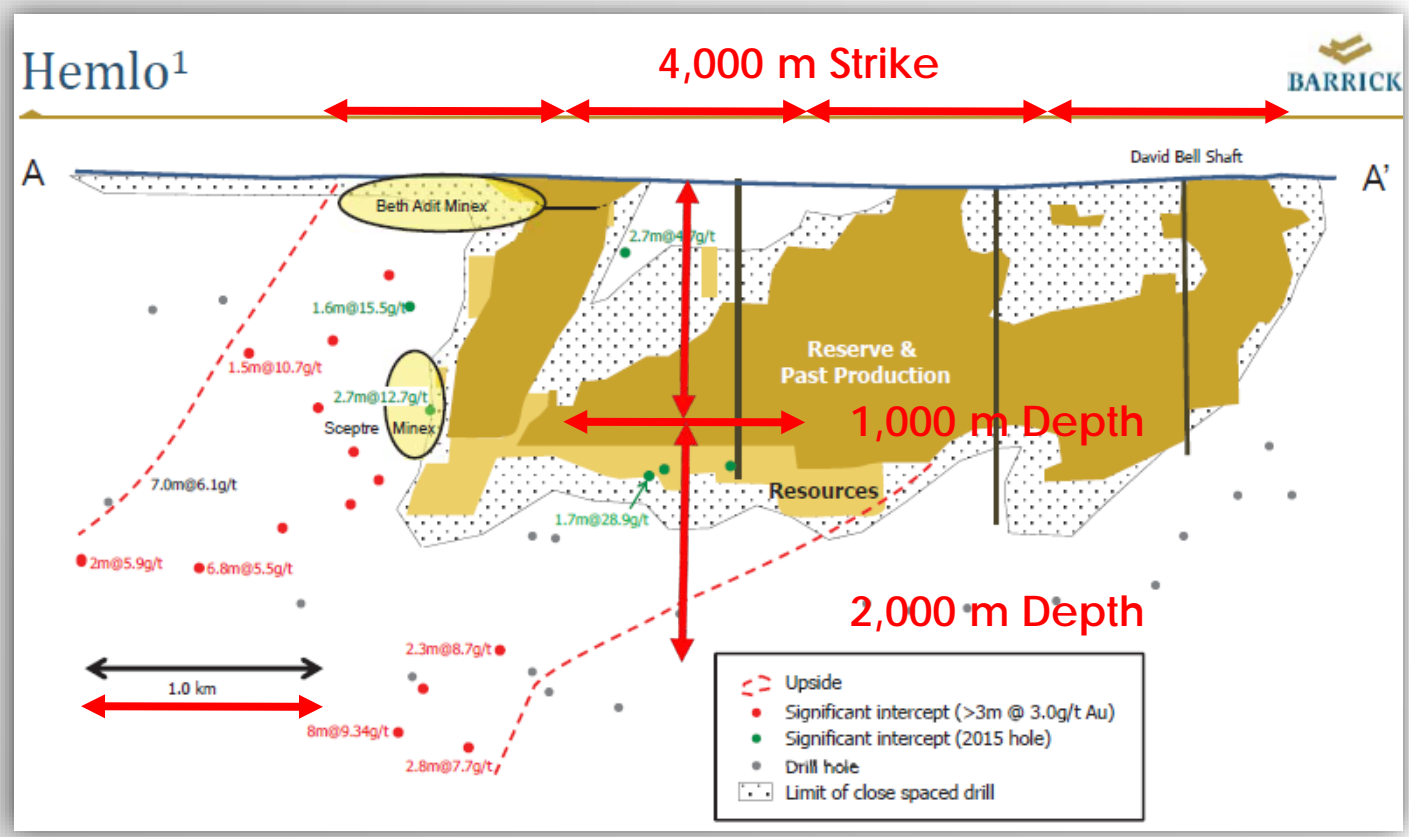
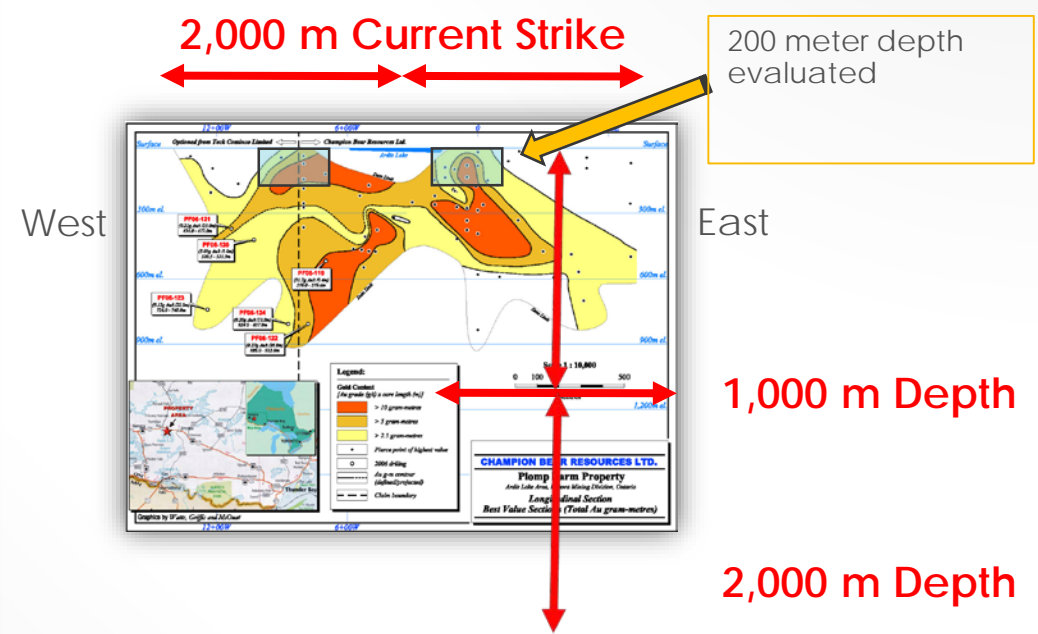


Image source: Barrick Gold Corporation, investor's day presentation, February 22, 2016



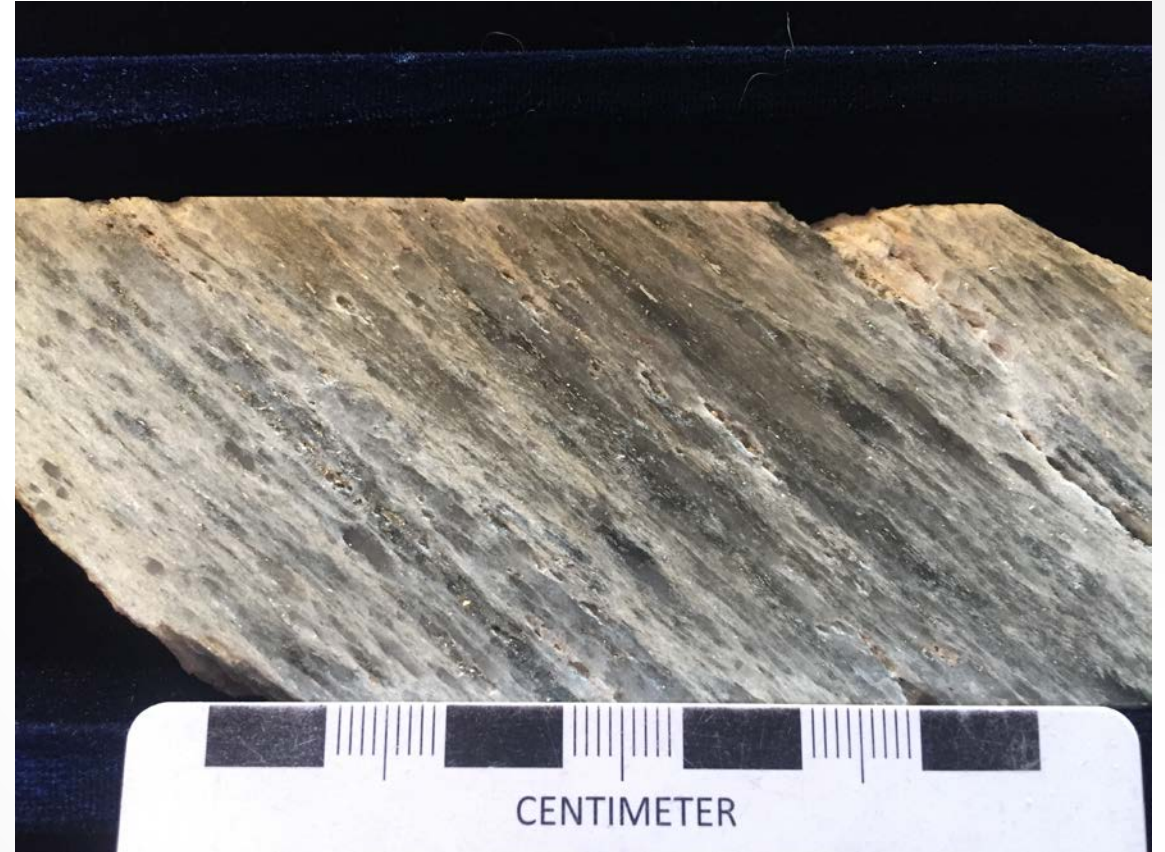
PLOMP FARM CORE



Sheared, altered felsic metavolcanics with andalusite porphyroblasts from Plomp Farm (NQ core)

Current estimated cost to Pre-Feasibility Study \$8 to \$10MM

- Average drill depth = 500 meters
- Local Project Manager – Garry Clark P.Geo.(Clark Exploration)

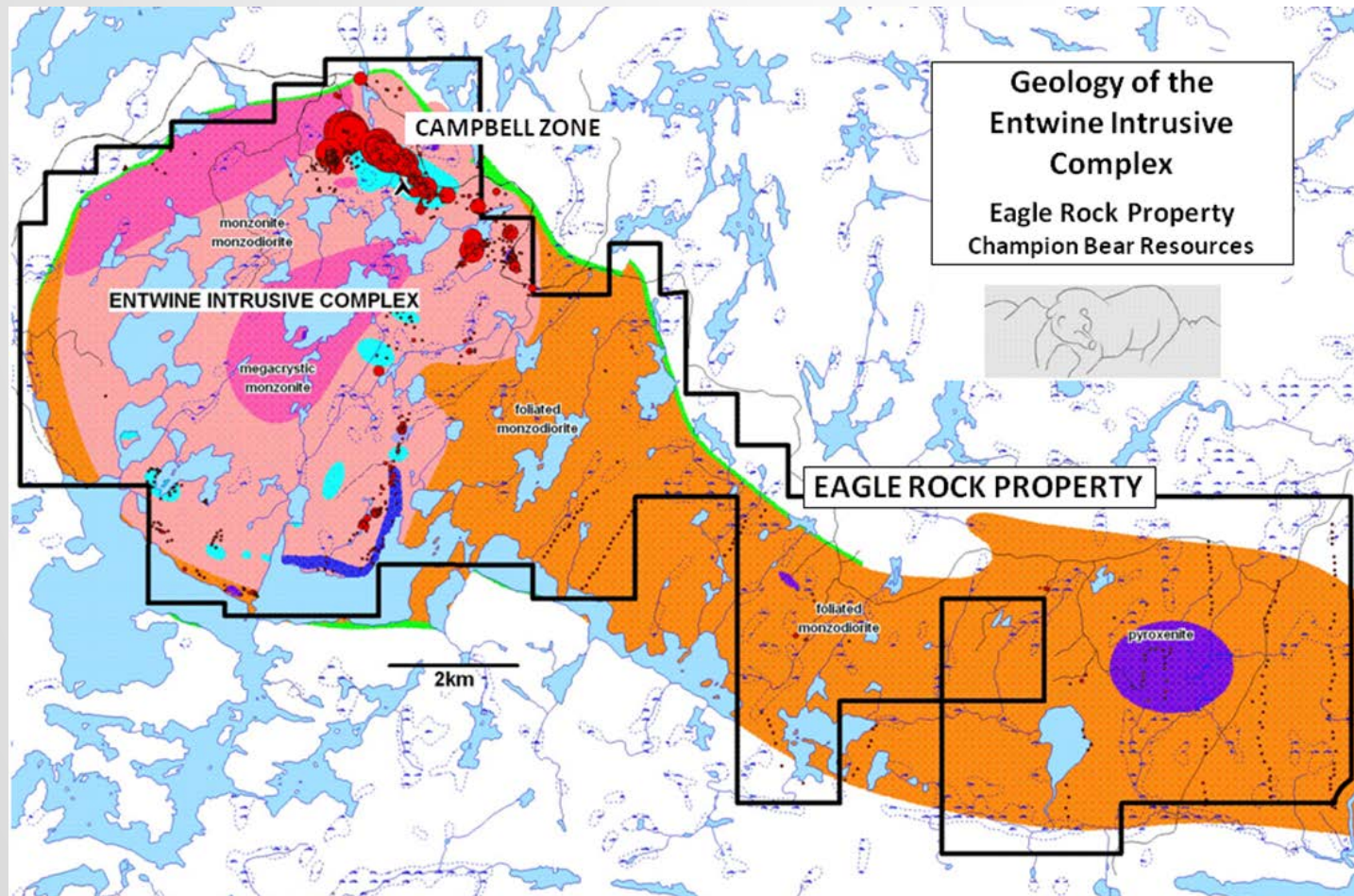


Sheared, altered felsic metavolcanics from Plomp Farm (NQ core) samples

Current estimated dimensions of mineralization

- Height = Surface to 900 meters, open at depth
- Length = 2,200 meters, open on strike East and West
- Width = 15 meter average

EAGLE ROCK OVERVIEW



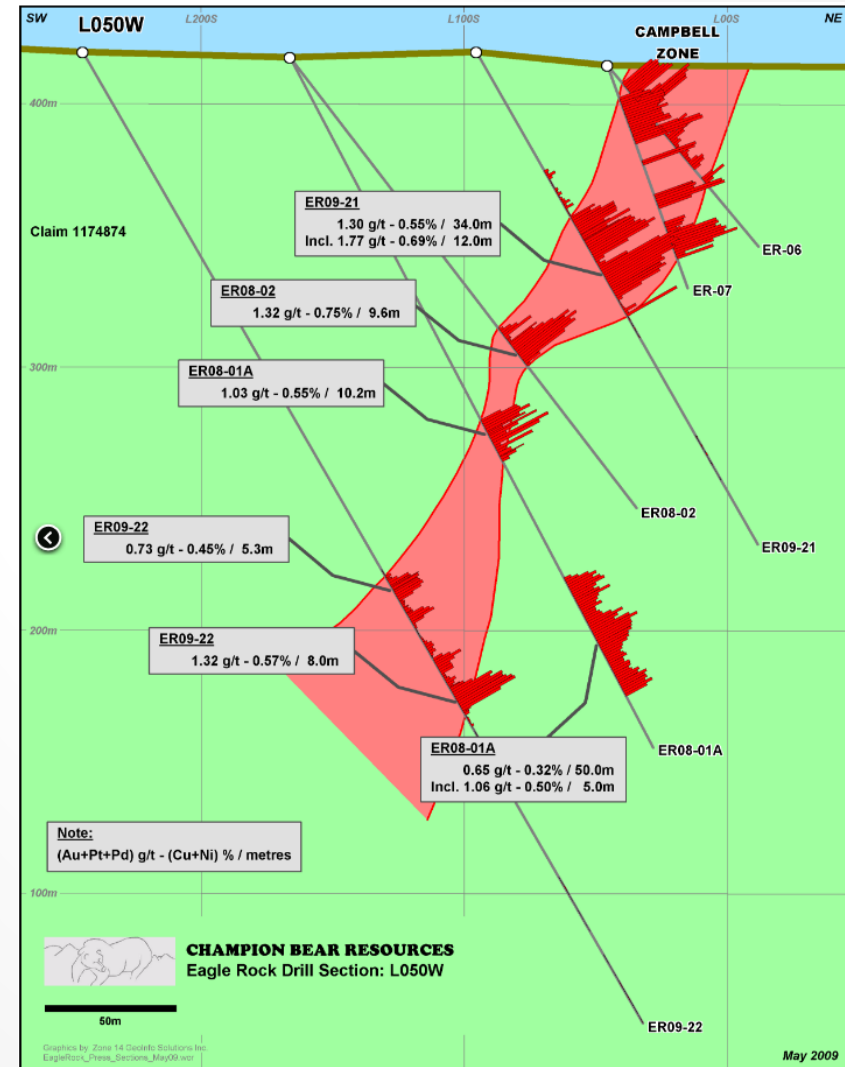
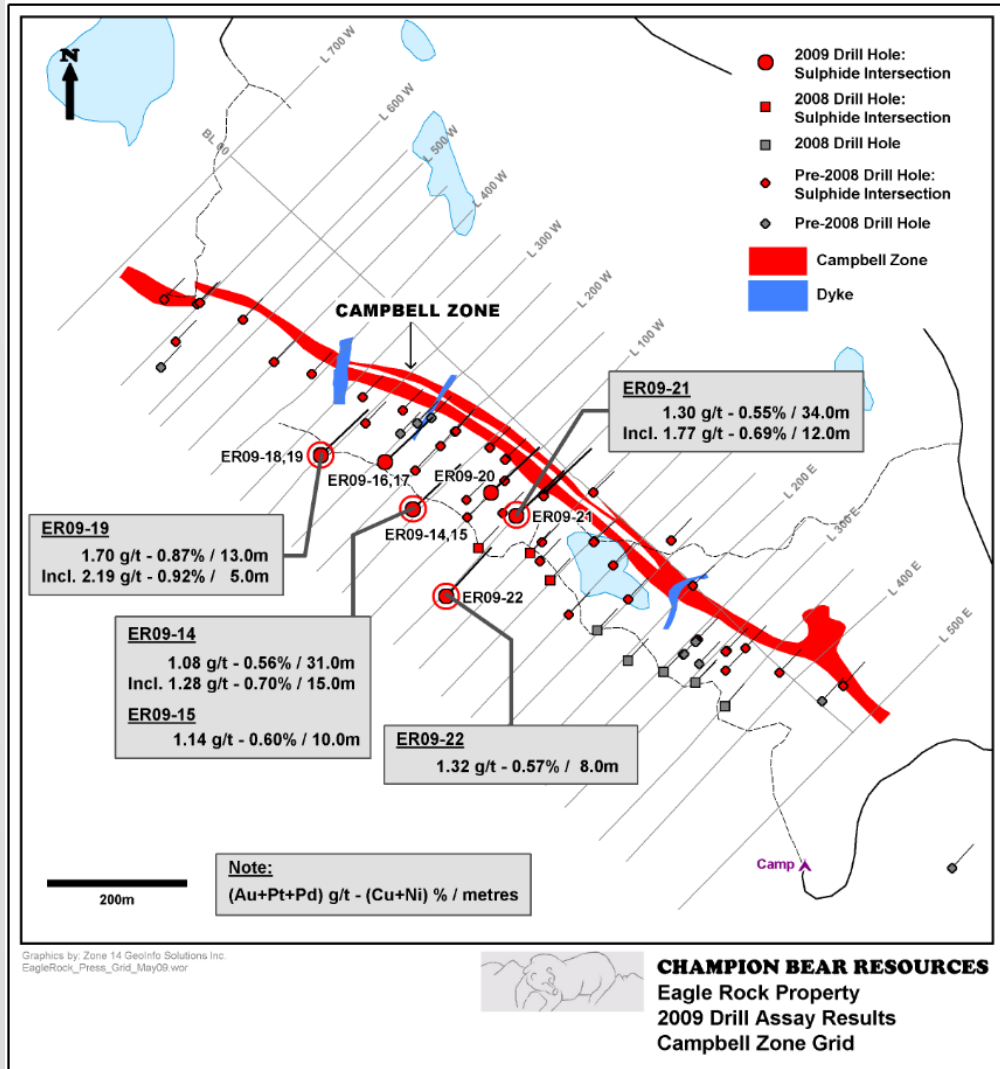
Eagle Rock – Multi-phase sanukitoid intrusive complex host to Cu-Ni-PGE mineralization. **PGE dominated by Palladium up to 1.04 g/t.** Drill assays up to **2.19 g/t PGE and 0.92% Cu+Ni over 5 meters** (part of wider interval grading 1.70 g/t TPM+Au and 0.87% Cu+Ni over 13 meters) on potential 12 km trend for Campbell Zone sulfides. **Open at depth and along strike to the SE.**

- 33,724 acres of claims at 100% working interest
- 92 drill holes and wedges drilled to date(14,000 m)
- All weather paved highway accessible
- Several surface expressed sulphide deposits with the main Campbell Zone mapped over 7 km to date
- 757 sq.km Hi-Res AeroMag survey flown in 2005

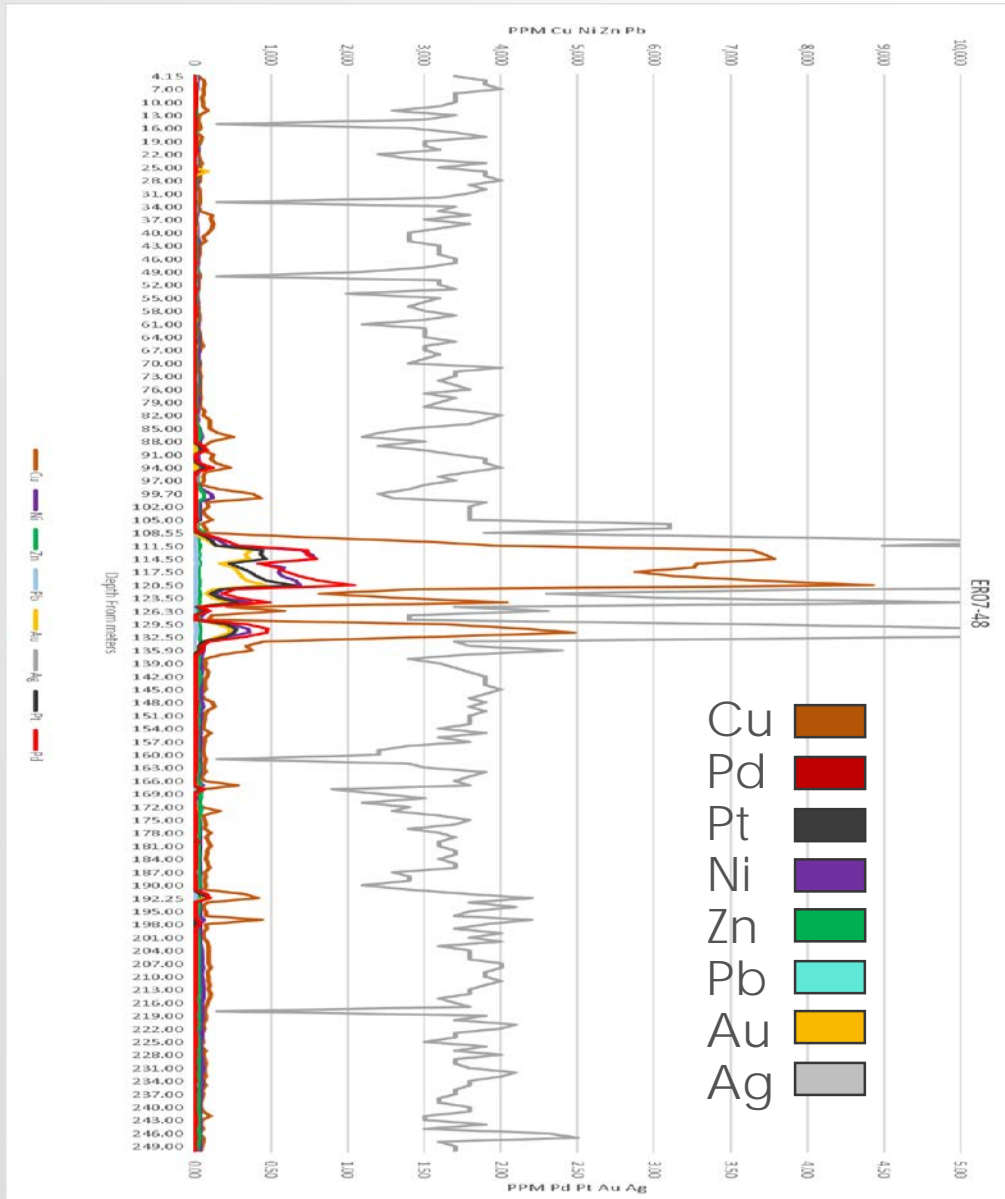
Go Forward Plans for 2018

- Drilling up to 2,000 meters
- Conduct an airborne geophysical survey
- Moving towards the Initial Mineral Resource Assessment

EAGLE ROCK MAPPING AND XSECTION



MINERALIZATION SUITE ER07-48 EXAMPLE



ER07-48 Drill Hole 28 meter Averages

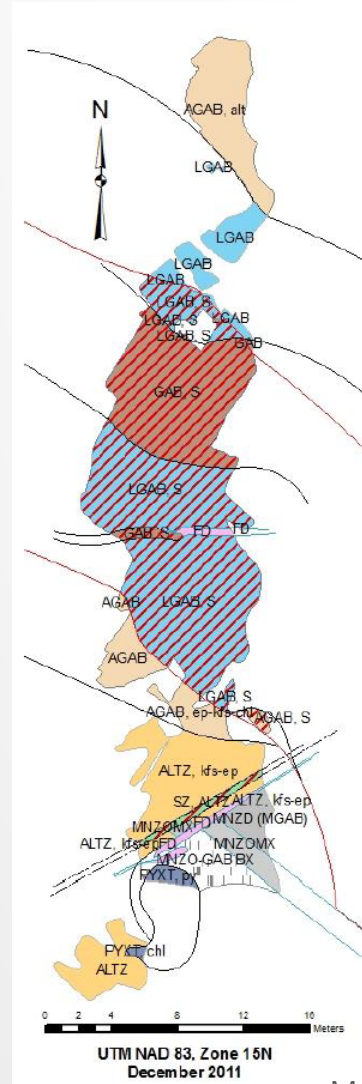
Cu>Ni 6:1
Ni>Zn 11:1
Pd>Au 2.2:1
Pd>Pt 1.7:1
Ag>Au 28:1
Co>Zn 1.1:1

Cu 3,831 ppm
Ni 646 ppm
Co 65 ppm
Zn 60 ppm
Pb 18 ppm
Pd 0.38 ppm
Pt 0.22 ppm
Au 0.17 ppm
Ag 4.9 ppm
S% 0.87%

EAGLE ROCK TRENCHING

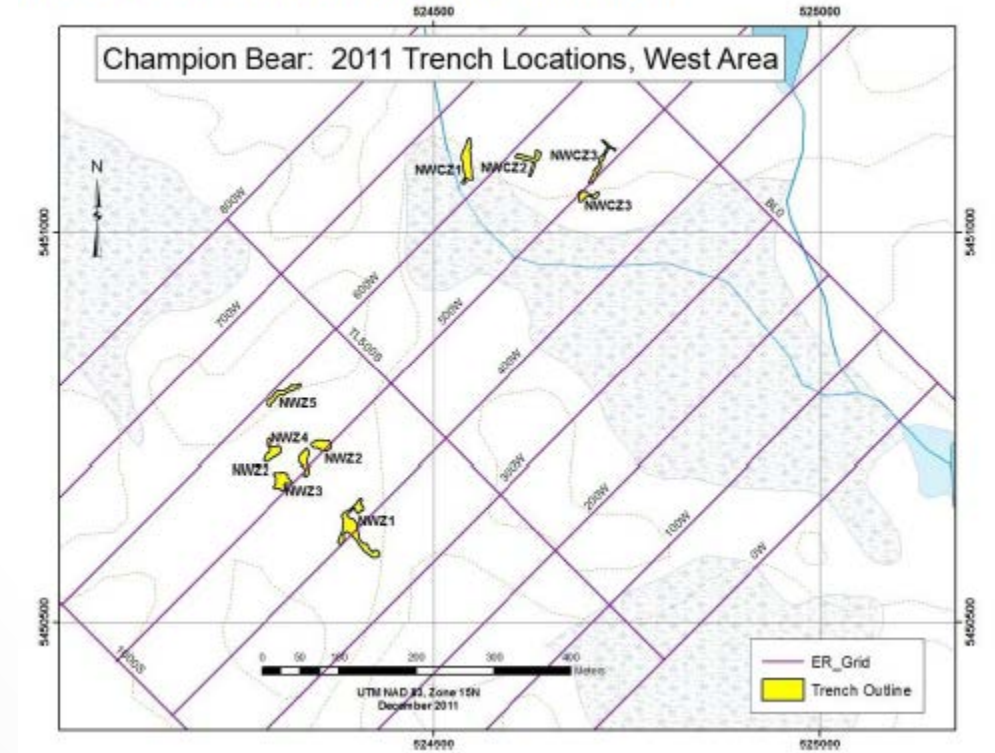


Trench 1 at the NWCZ looking north midway



Map of Trench 1, NWCZ

Northwest Campbell Zone Trenches



Map of western trenches

Bjorkman, Katarina 2011
Geotechnical Report



EAGLE ROCK CORE



Gabbro-Gabbronorite unit host to Campbell Zone. Photo of sample 35330 from ER09-19. 2.33 g/t TPM and 0.95% Cu+Ni

Current estimated cost to Pre-Feasibility Study \$10 to \$12MM

- Average drill depth = 250 meters
- Internal Estimates > 200 million lbs Cu-Pt-Pd Campbell Zone only
- Local Project Manager – Garry Clark P.Geo.(Clark Exploration)

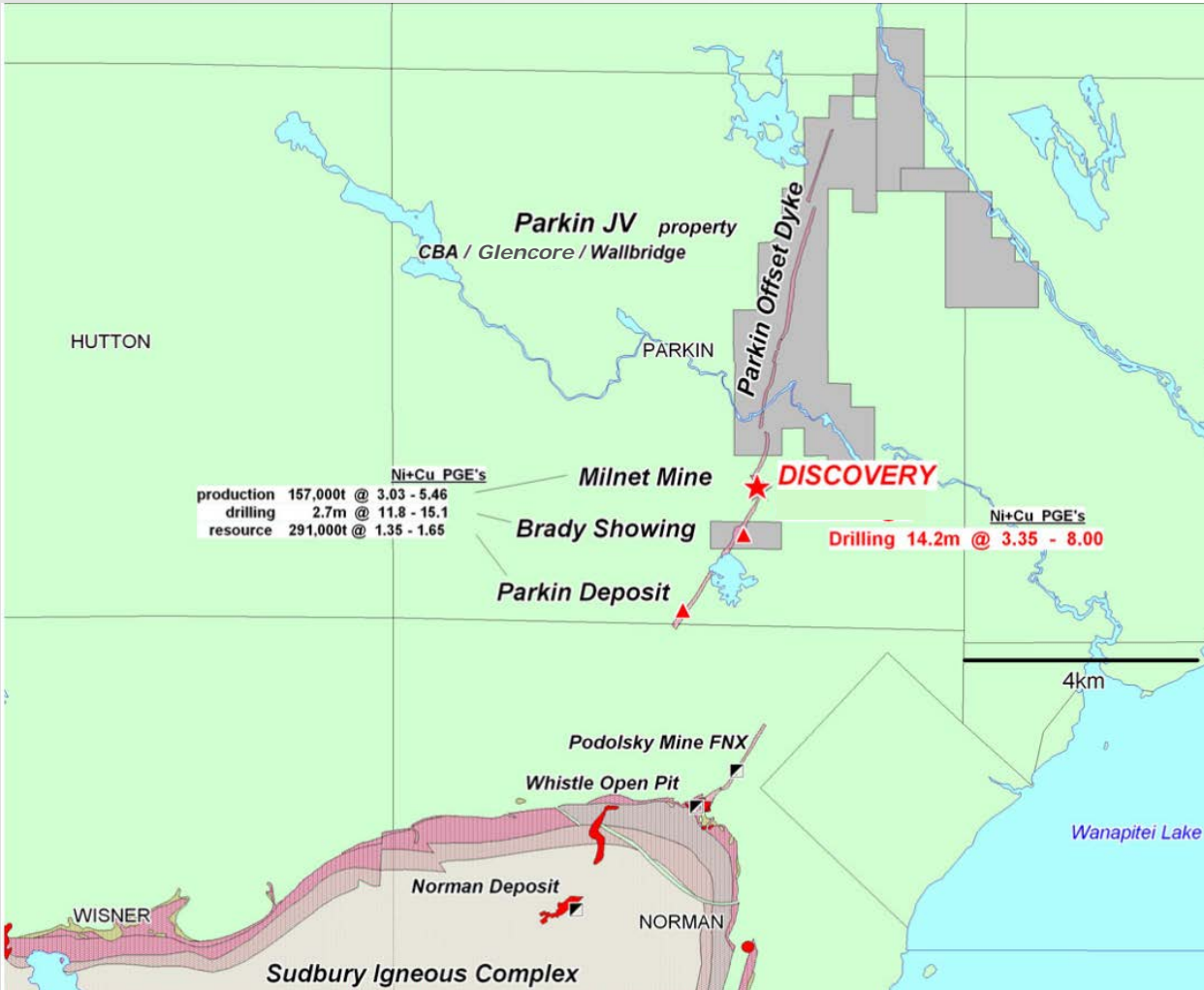


Gabbro-Gabbronorite unit host to Campbell Zone. Photo of sample 35331 from ER09-19. 2.27 g/t TPM and 0.98% Cu+Ni

Current estimated dimensions of Campbell Zone mineralization

- Height = Surface to 300 meters, open at depth
- Length = 7,000 meters, open on strike to the SE
- Width = 30 meters

PARKIN OFFSET DYKE



Parkin Offset Dyke – Metavolcanics adjacent to Parkin Offset dyke as high as **44 g/tonne Au over 1.4 m at 543 meters**, shallow BHUTEM and **deep RIM anomalies** identified in Sudbury Basin Offset dyke, **11.2% Cu, 9.2 g/t Pt, 4.3 g/t Pd and 1.6 g/t Au over 2.7 m** at surface (channel sample of Brady Showing). **Open at depth and along strike.**

Champion Bear owns a 50% Carried Interest in claims, converts to loan payable from production revenue in Parkin Offset Dyke under JV and retain right to become Operator directing all future activity

- 2,018 acres land position at 50% working interest
- 118 holes drilled to date, 1st drilled in 1983
- Road infrastructure in place
- RIM, BHUTEM, EM Surveys

Expected cost to Pre-Feasibility Study \$11 to \$12MM

- Average drill depth = 800 meters
- Local Project Manager – Todd McCracken P.Geo.(WSP Canada Inc.)

Current estimated dimensions of mineralization

- Height = Surface to 800 meters, open at depth
- Length = 300 meters, open on strike N and S
- Width = 50 meters

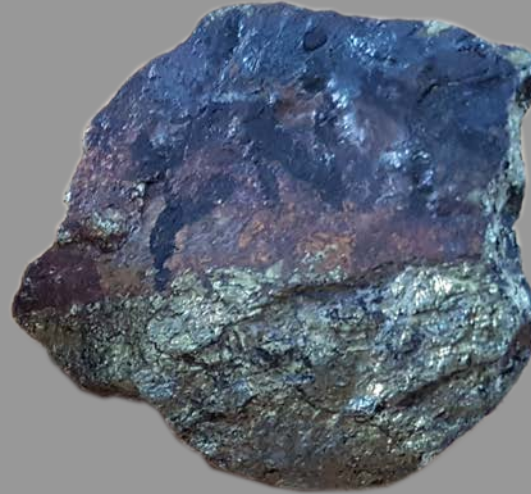
PARKIN OFFSET DYKE SAMPLES



Parkin Offset



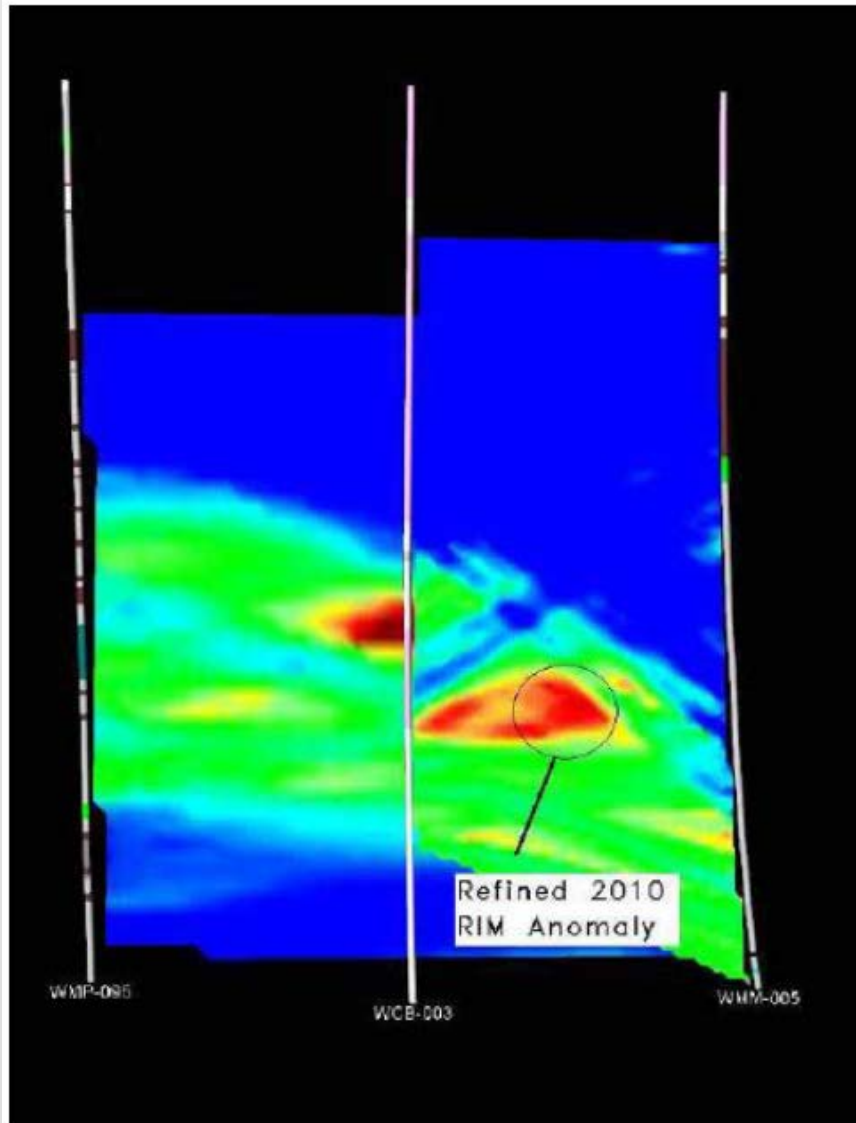
FNX Podolsky mine



PARKIN TWP. OFFSET
1.3% Ni, 2.0% Cu, 1.0% Co,
0.6 opt Pt, 0.8 opt Au

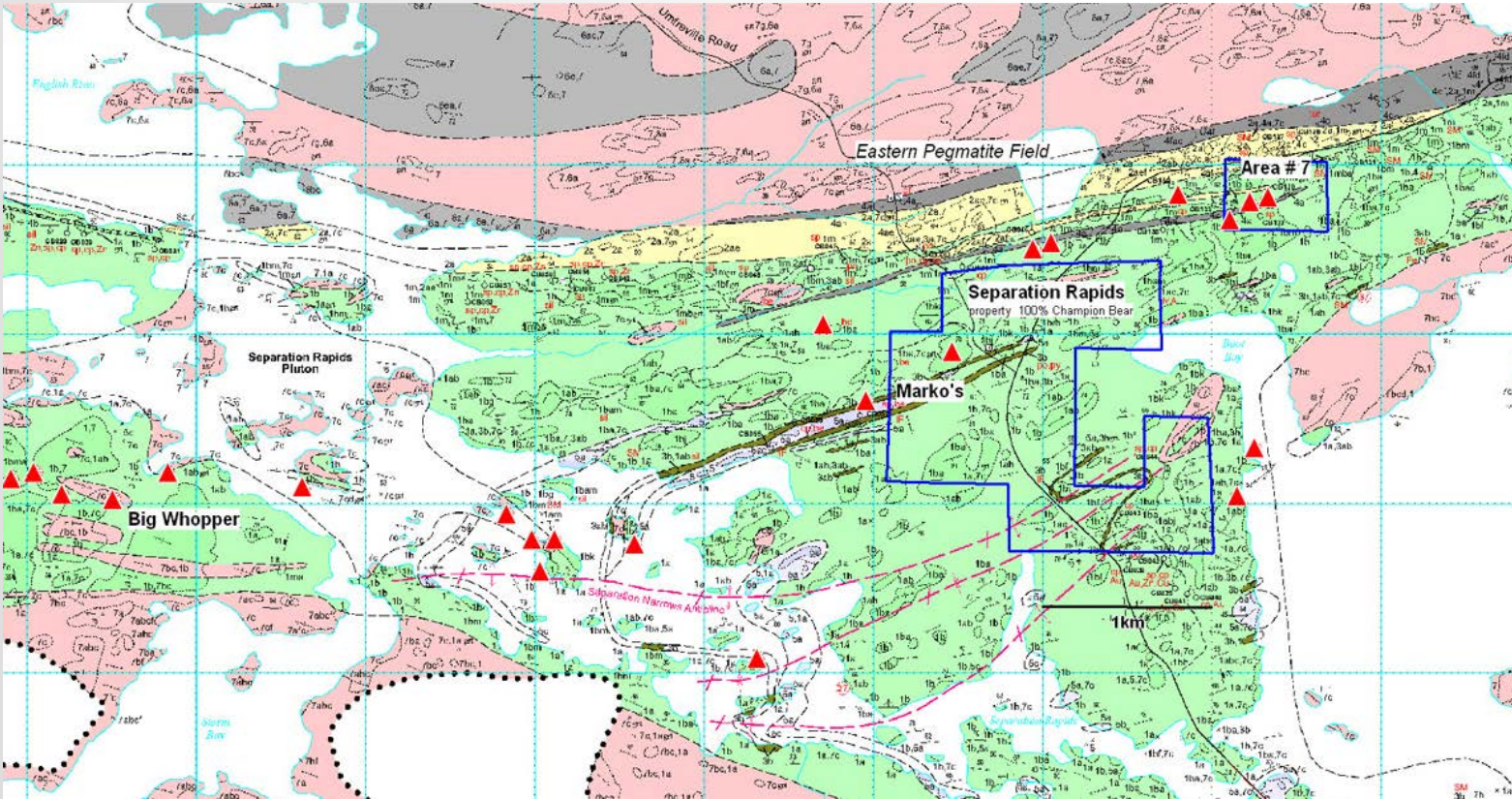


PARKIN UNTESTED RIM ANOMALY



- 2010 radiowave imaging (RIM) Survey between boreholes generated well defined RIM anomalies that are not yet tested by the JV operator
- Similar to FNX Podolsky Mine RIM anomaly 4 to 6 kms south on offset dyke trend

SEPARATION RAPIDS



Separation Rapids – Petalite pegmatite Marko's zone directly east of Big Whopper deposit, area surface length measured up to 170 meters and drilling results up to 1% Ta₂O₅, 0.097% Cs₂O, 0.77% Rb₂O, 1.26% SnO₂ and 0.43% Li₂O - Highest recorded Tantalum sample in Ontario(Ontario Geological Survey 2000). Open at depth and along strike.

- 672 acre land position at 100% working interest
- 22 holes drilled to date, Marko's 1st drilled by Champion Bear in 1997
- Road infrastructure in place

Current estimated cost to Pre-Feasibility Study \$3 to \$5MM

- Average drill depth = 300 meters
- Local Project Manager – Garry Clark P.Geo.(Clark Exploration)

Current estimated dimensions of mineralization

- Height = Surface to 250 meters, open at depth
- Length = 200 meters, open on strike NE and SW
- Width = 8 meters



PROJECT SUMMARIES



- **The 2018 focus will be to expand the resource base**

- **Plomp Farm** – Hybrid VMS Gold Deposit. Folded/strained barite-enriched quartz-sericite-sulfide schist unit averaging 15m thick and sericitized felsic tuffs identified with wide spread, distinct Pathfinder elemental signatures. 2 OGS samples testing **1.72 and 2.98 ounces/t Au (53.5 and 92.7 g/t). 2.2 km strike length and mineralization to 900 meters TVD and Open on Strike and Depth.** Plan to drill infill **program -5,000 m along with re-sampling -35,000 meters of unsplit historical core. 100% Interest in claims.**

- **Advancing to Initial Mineral Resource Estimate in 2018**

- **Eagle Rock** – Multi-phase sanukitoid intrusive complex host to Cu-Pd-Ni-Pt-Au-Co-Ag mineralization. **PGE dominated by Palladium up to 1.0 g/t.** Drill assays up to **2.19 g/t PGE+Au and 0.92% Cu+Ni over 5 meters** (part of wider interval grading 1.70 g/t TPM+Au and 0.87% Cu+Ni over 13 meters) on potential 12 km trend for Campbell Zone sulfides. Plan to drill **infill program -2,000 m for Initial Mineral Resource Estimate in 2018 and fly an airborne geophysical program. 100% Interest in claims.**

- **Non-Operated 2018 Project**

- **Parkin Offset Dyke** – Metavolcanics within or adjacent to Parkin Offset dyke as high as **44 g/tonne Au over 1.4 m** at 543 meters, shallow BHUTEM and deep RIM anomalies identified in Sudbury Basin Offset dyke, **11.2% Cu, 9.2 g/t Pt, 4.3 g/t Pd and 1.6 g/t Au over 2.7 m** at surface (channel sample of Brady Showing). Non-operated JV activity throughout 2018 expected. 50% Carried Interest in claims converts to loan payable from production revenue.

- **Currently Unfunded, Operated Project**

- **Separation Rapids** – Petalite pegmatite zone directly east of Big Whopper deposit, area surface widths measured up to 170 meters and drilling results up to **1% Ta₂O₅, 0.097% Cs₂O, 0.77% Rb₂O, 1.26% SnO₂ and 0.43% Li₂O - Highest recorded Tantalum sample in Ontario(Ontario Geological Survey 2000).** 100% Interest in claims. May fund 2018 activity based on success of equity raise.

- **Target Metals – Au, Pd, Pt, Cu, Ni, Co, Ag, Ta, Li**

- **Over \$20MM spent to date on all properties**

- **All claims in mining friendly, conflict free jurisdiction of Ontario, Canada with ~200 years of mining history.**

- **2018 activity to be funded through equity raise(s)**



CHAMPION BEAR OVERVIEW

Champion Bear is a Canadian mineral exploration and development company focused exclusively on the historically prospective mining regions of Ontario, Canada. The company's primary targets are Gold, Copper, Palladium, Platinum and to a less extent other PGMs, Tantalum and REE. Champion Bear's aim is to create shareholder value through discovery, acquisition and joint ventures. Champion Bear was incorporated in 1987 and is publicly listed on the Toronto Venture Exchange.



CHAMPION BEAR RESOURCES LTD. (TSX.V:CBA)

For further information about Champion Bear please contact:

Richard Kantor, President and CEO

Email: richard.cbear@shaw.ca

Phone: +1.403.229.9522

Website: www.ChampionBear.com