



CHAMPION BEAR RESOURCES

EXPLORING ADVANCED STAGE PRECIOUS METAL PROJECTS IN ONTARIO

Forward Looking Statements

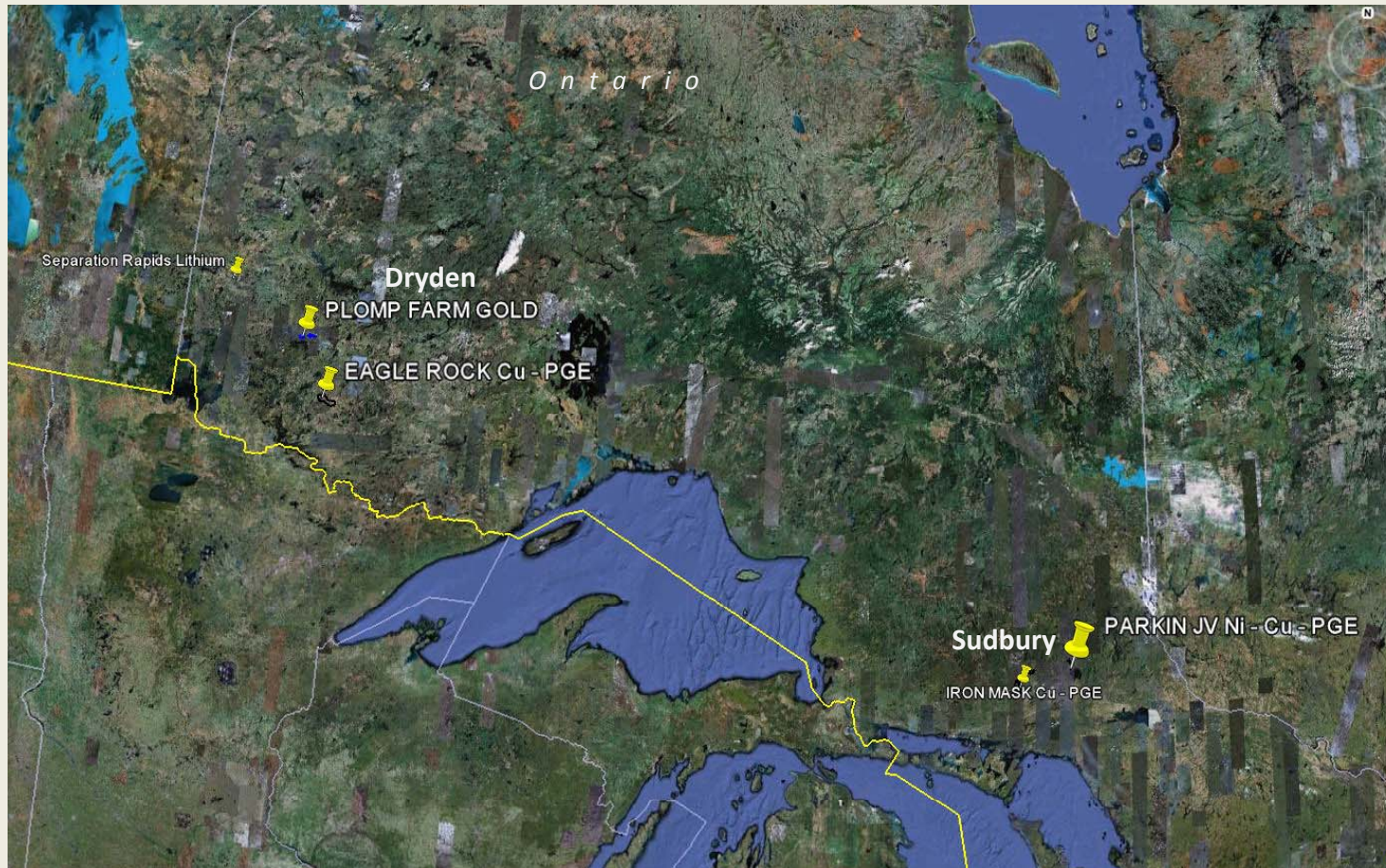
This exploration update contains forward-looking statements concerning the timing and composition of the surveying, sampling, prospecting, mapping, drilling and exploration programs to be completed on certain of Champion Bear's mineral properties which are based on Champion Bear's current internal expectations, which may prove to be incorrect. These statements are not a guarantee of future performance and undue reliance should not be placed on them. Such forward-looking statements necessarily involve known and unknown risks and uncertainties that are common to junior mineral exploration companies. These risks and uncertainties include, among other things, Champion Bear's need for additional funding to continue its exploration efforts, changes in general economic, market and business conditions; and competition for, among other things, capital and skilled personnel. The Company undertakes no obligation to update or revise any forward-looking statements except as expressly required by applicable securities laws.

The TSX Venture Exchange has not reviewed and does not accept responsibility for the adequacy or accuracy of this release.



ONTARIO PROJECTS

Precious Metal Focused



PROPERTY

3 Advanced Projects

EAGLE ROCK -- Dryden

Large, 100% held
Campbell Zone Cu- Au -Pt-Pd
Drill ready targets

PARKIN JV -- Sudbury

JV With Wallbridge & Impala Pt
High Value Sudbury Footwall
New Discovery on strike
Ongoing Exploration by Wallbridge
Impala continues to fund
Carried interest to Production

PLOMP FARM -- Dryden

Large, 100% held
Hemlo-type, Au-rich VMS
Drill ready targets

*Polymetallic Deposits containing High Value Metals
Gold – Platinum – Palladium – Nickel - Copper*



EAGLE ROCK Cu – Au – Pt - Pd

Dryden, Ontario

PROPERTY

Large 20 x 6km, 100% CBA

GEOLOGY

Large polyphase Intrusive with several sulphide showings.
Reef-type Cu – Au – Pt - Pd

STAGE

Advanced Drilling and Grass Roots

CAMPBELL ZONE

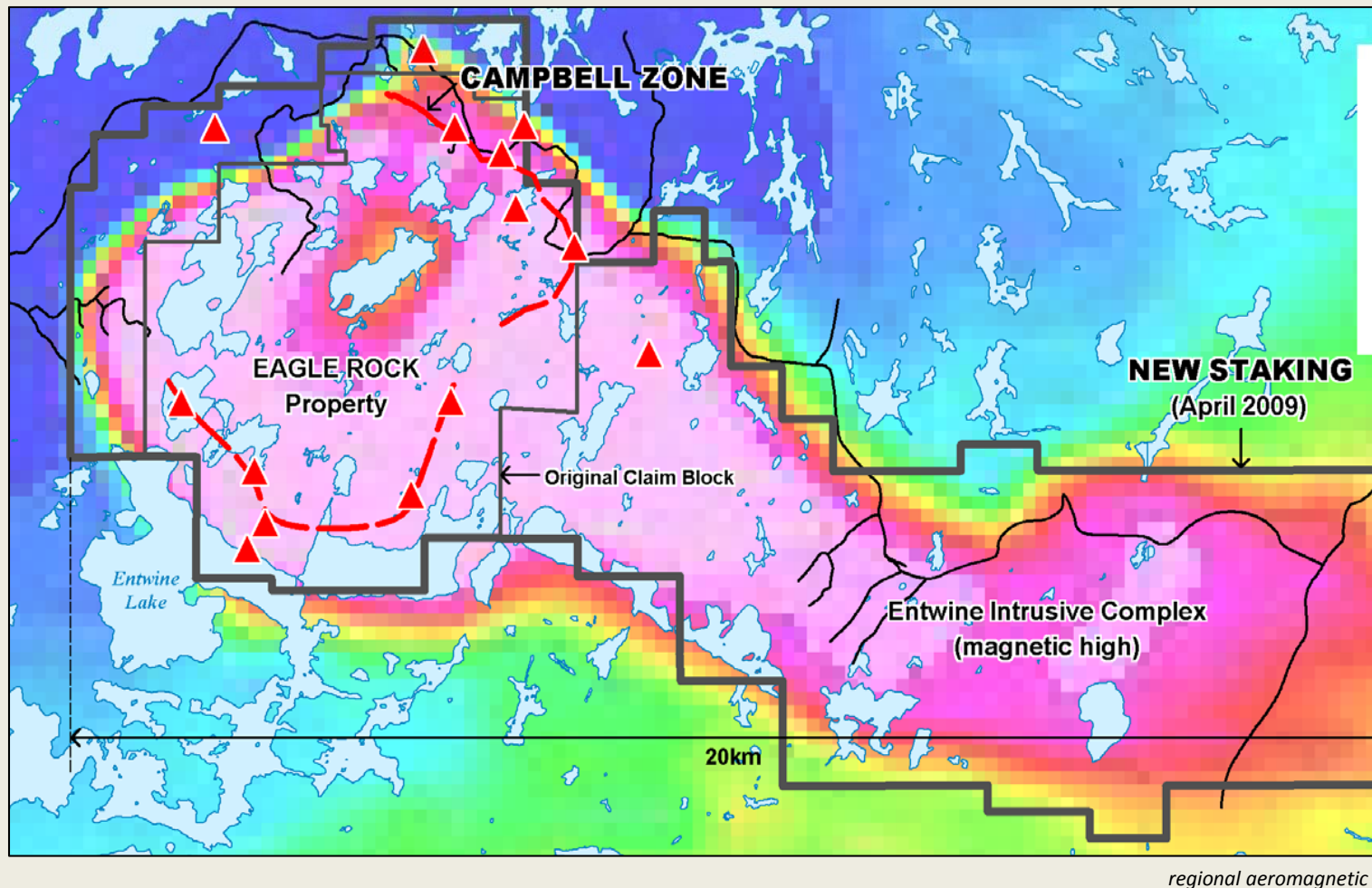
Mineralized for 1km at surface
Drilling continues to define horizon down-dip for possible open pit.
2009 Drill Results Very Good.

OTHER TARGETS

- 1- Western Lobe sulphide trend
- 2 - Unexplored Eastern "Tail"

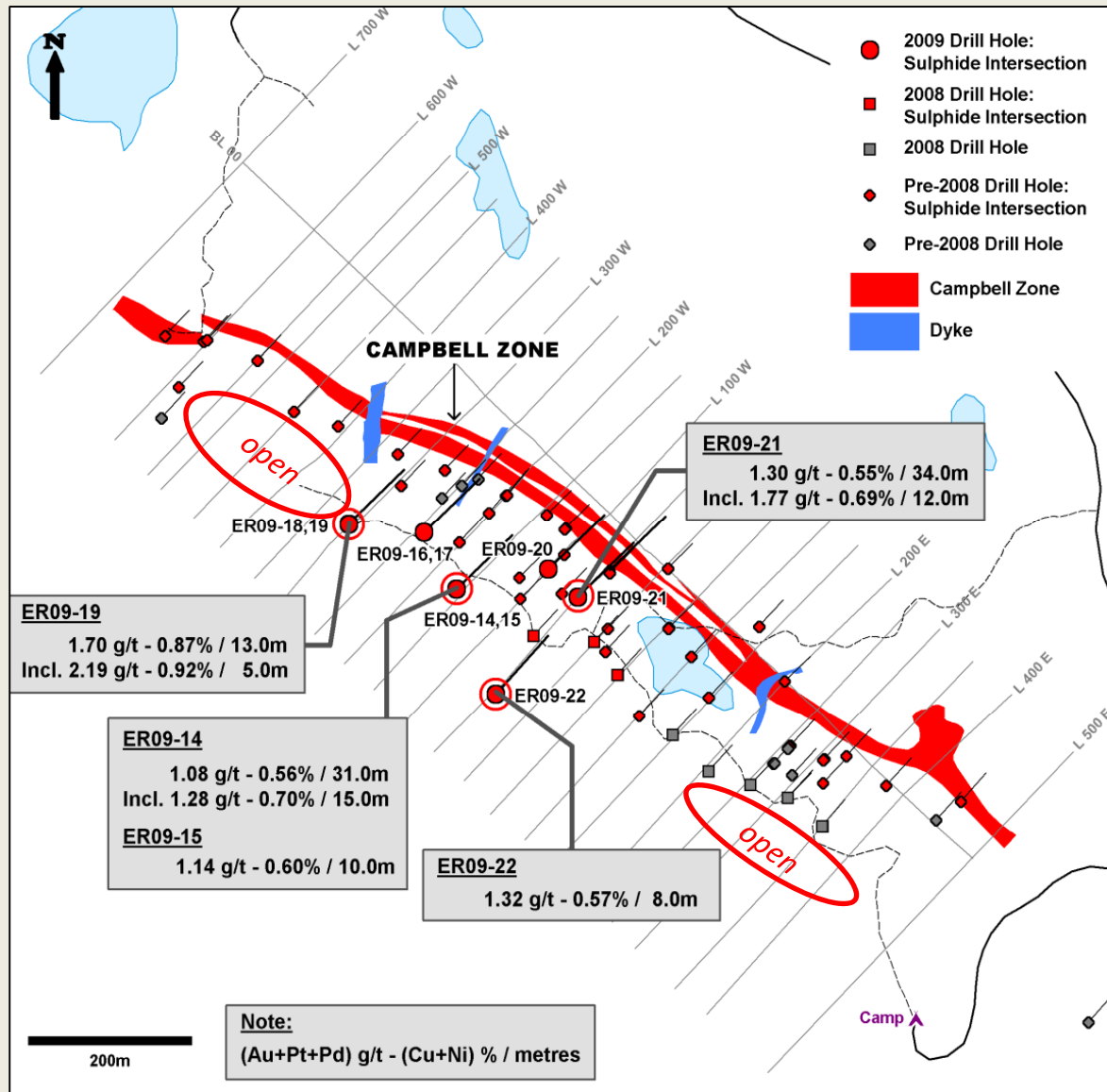
2010 PLANS

- 1 - Advance Campbell Zone with Drilling and possible Resource Estimation
- 2 - Evaluate Other Targets for additional metal-rich Zones in anticipation of Drilling



CAMPBELL ZONE Cu-PGE

Eagle Rock Property



2009 Drill Results

CAMPBELL ZONE

Sulphide zone exposed for > 1km
Continuous, predictable horizon

STAGE

Advanced-stage Drilling

SULPHIDE ZONE

Low-sulphide, High Metal Tenor
Typical of Pt-Pd reef-type deposits
Very Good Metallurgy

2009 RESULTS

Extended Zone to NW for >200m
Best Grade Intersection to date
ER09-19 – 2.19g/t over 5m

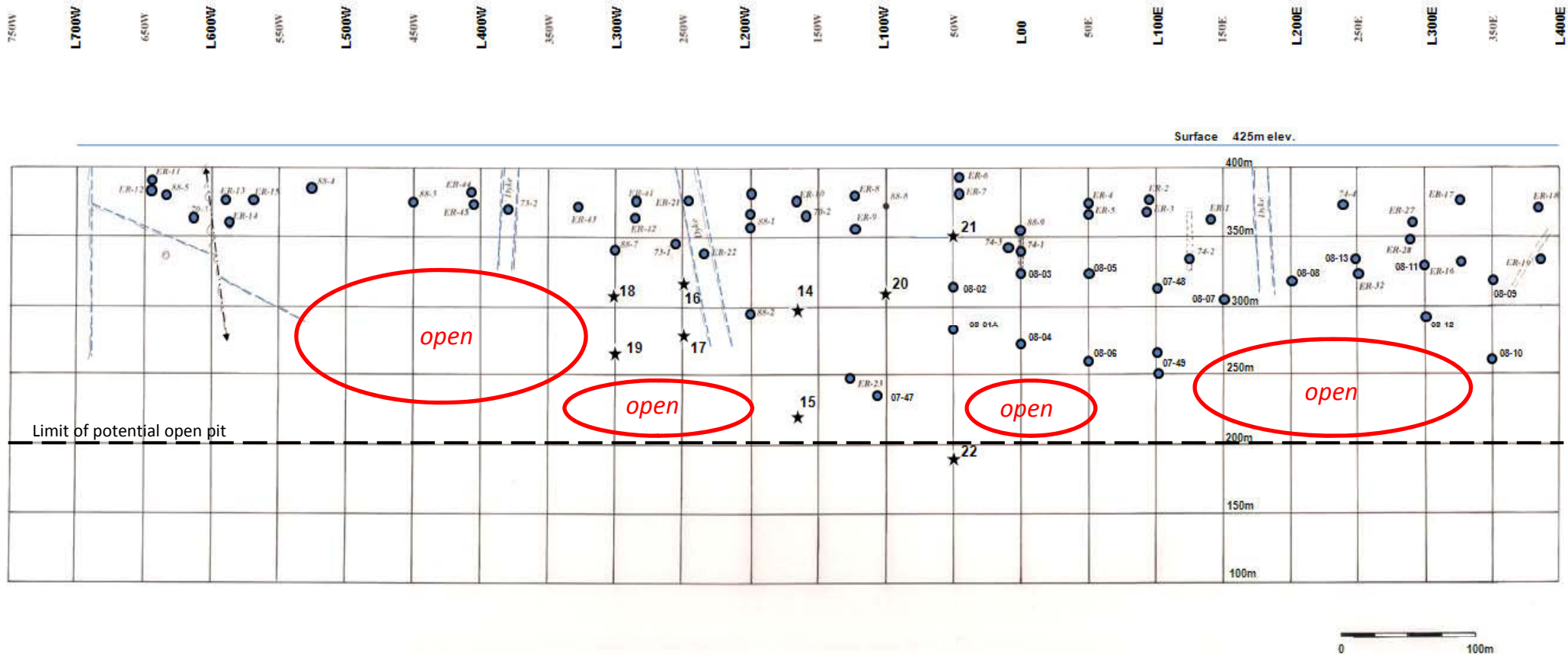
2010 PLANS

Drill NW strike extension
Drill SE strike extension



CAMPBELL ZONE Cu-PGE

Eagle Rock Property



Idealized Vertical Longitudinal Projection

LONGITUDINAL SECTION

Historic Drilling defined the shallow part of the Zone

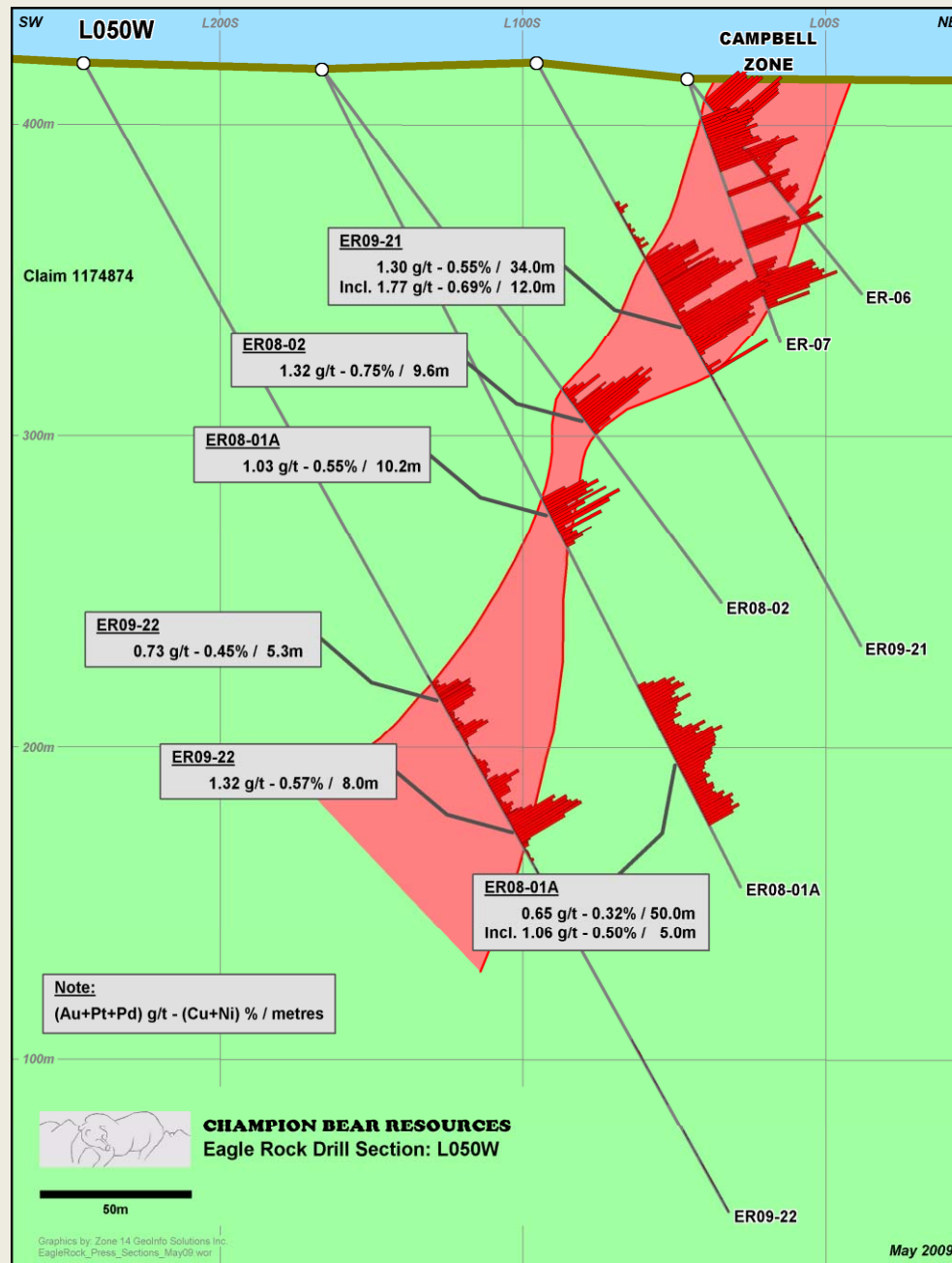
Recent Drilling has extended the Zone from 75m to >200m below surface

2010 Drilling will target the open untested portion of the Zone in anticipation of a Resource Estimation.



CENTRAL AREA

Campbell Zone, Eagle Rock Property



CENTRAL AREA

Broad zone of Sulphides

Possibly 2 parallel horizons

Continuous from surface to depth

SULPHIDE ZONE

Good correlation between sulphide abundance and grade of Cu and PGE's

2009 RESULTS – Section L050W

ER09-21

In-fill hole targeted a key gap in the historic drilling

Confirmed grade, width, and continuity of mineralization in shallow part of Zone

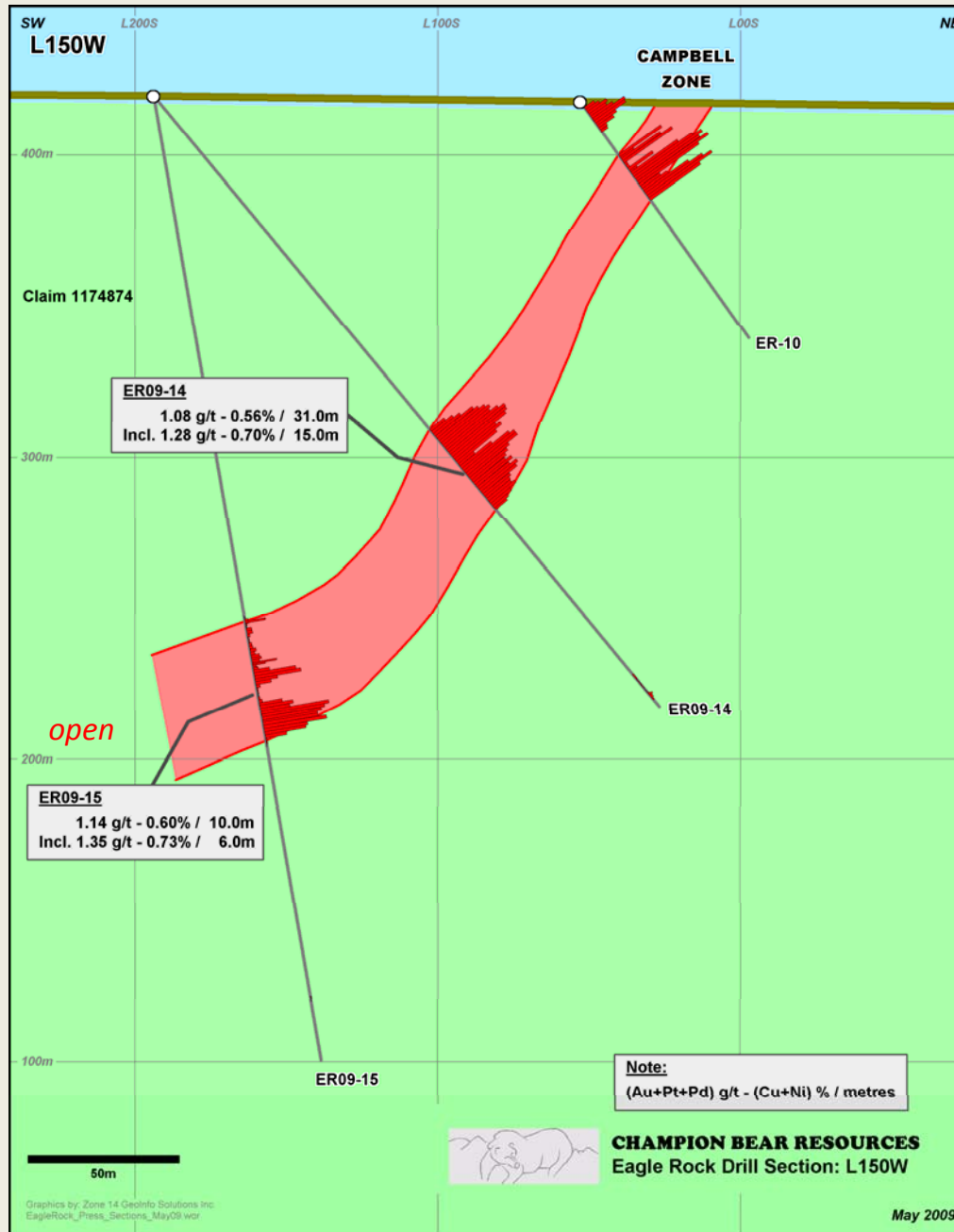
ER09-22

Follow-up hole targeted down-dip mineralization

Extended Zone to depth of open pit
Hit 2 modest Zones

NORTHWEST AREA

Campbell Zone, Eagle Rock Property



NORTHWEST AREA

2009 drilling targeted this open and under-explored portion of the Zone

2009 RESULTS – Section L150W

ER09-14

Aggressive step-out hole intersected broad zone of > 1g/t hosting a higher grade portion over 15m

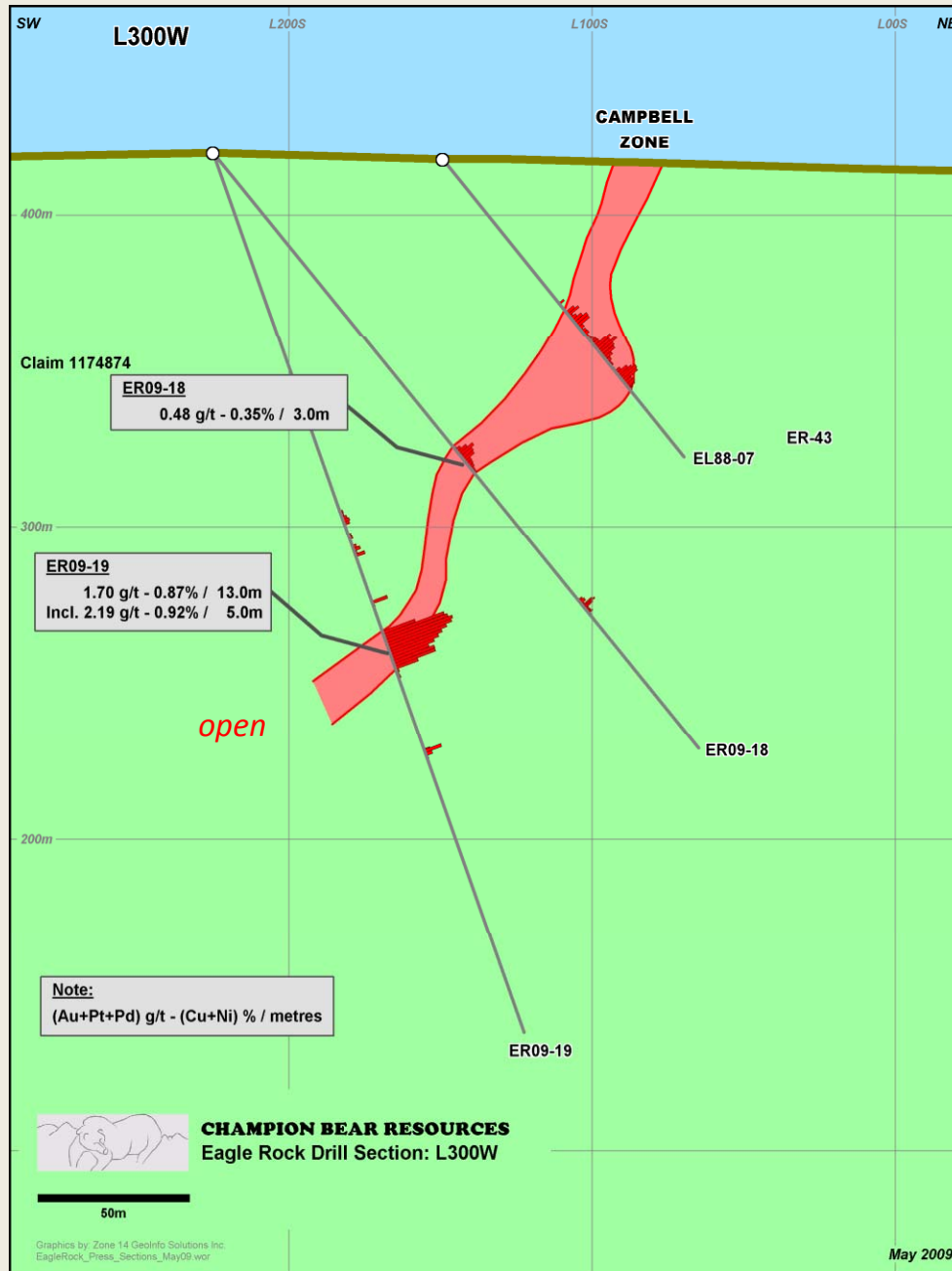
ER09-15

10m intersection extends the Zone down-dip for 100m



NORTHWEST AREA

Campbell Zone, Eagle Rock Property



NORTHWEST AREA

Continuous Zone of Sulphides
Open and Under-explored.

2009 RESULTS – Section L300W

ER09-19

Uniform Zone of very good sulphide
Best grade intersection drilled on
Property to date

Open down-dip and along strike

Indicates mineralizing system is
capable of producing higher grade
material

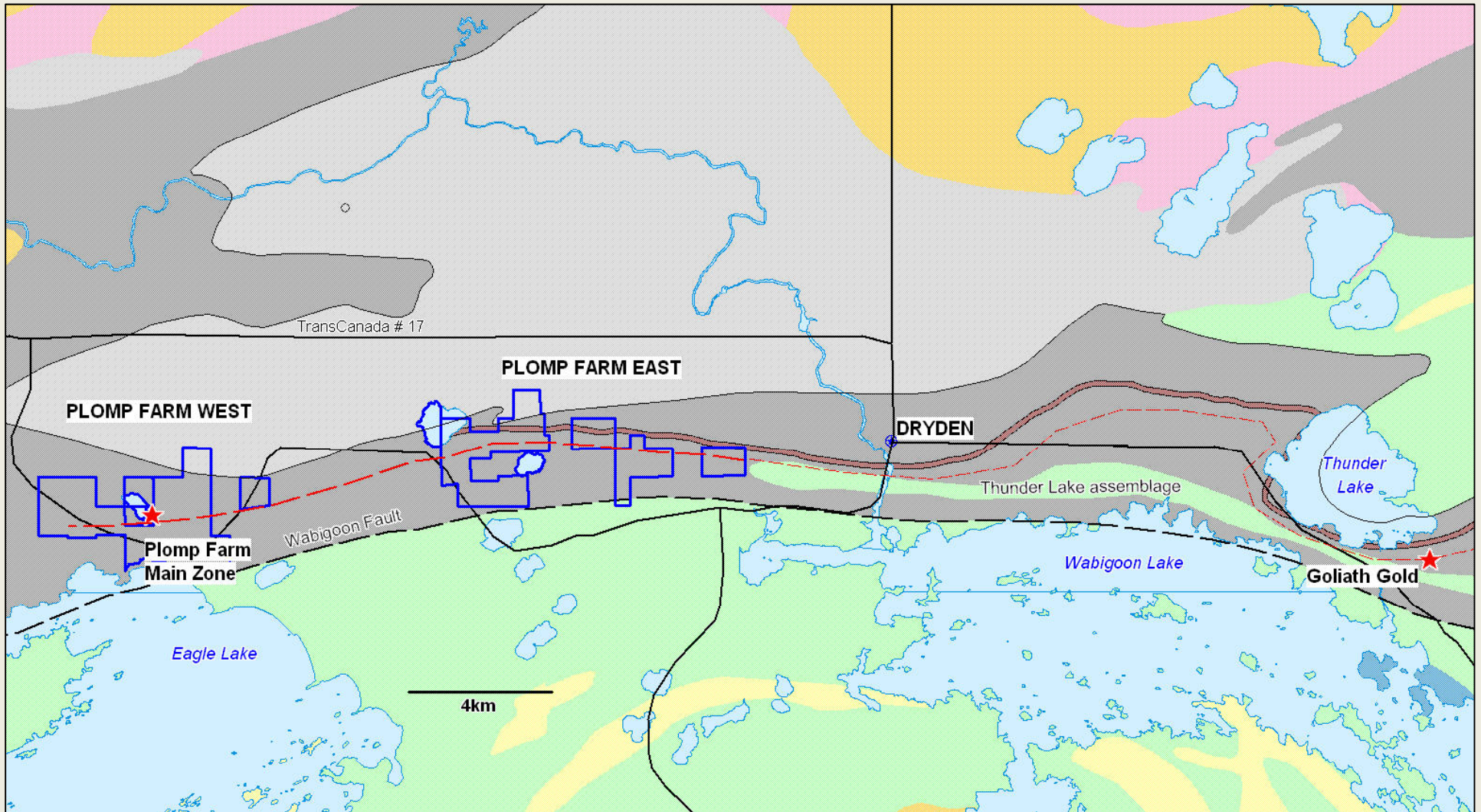
2010 PLANS

Continue to extend the Zone along
strike and down-dip of ER09-19



PLOMP FARM GOLD

Dryden, Ontario



Plomp Farm Regional Geology

PROPERTY

Covers most of 20km long gold trend west of Dryden and includes Plomp Farm Main Zone, 100% Champion Bear

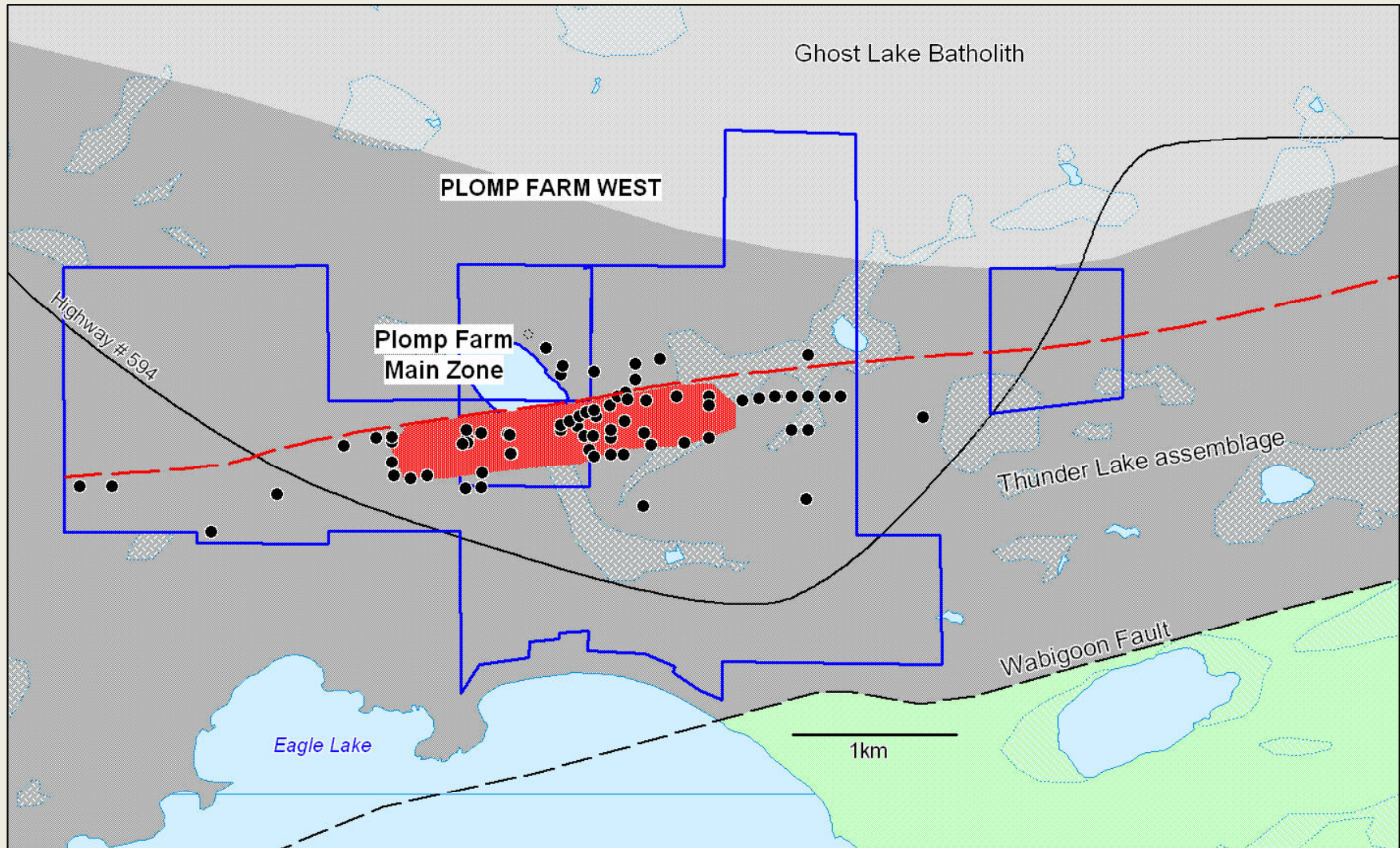
GEOLOGY

Thunder Lake (altered felsic volcanics and sediments) assemblage host of Treasury Metals Goliath Gold deposit (aka Thunder Creek) -- Note iron formation marker horizon



PLOMP FARM WEST

Dryden, Ontario



Plomp Farm West property

GEOLOGY

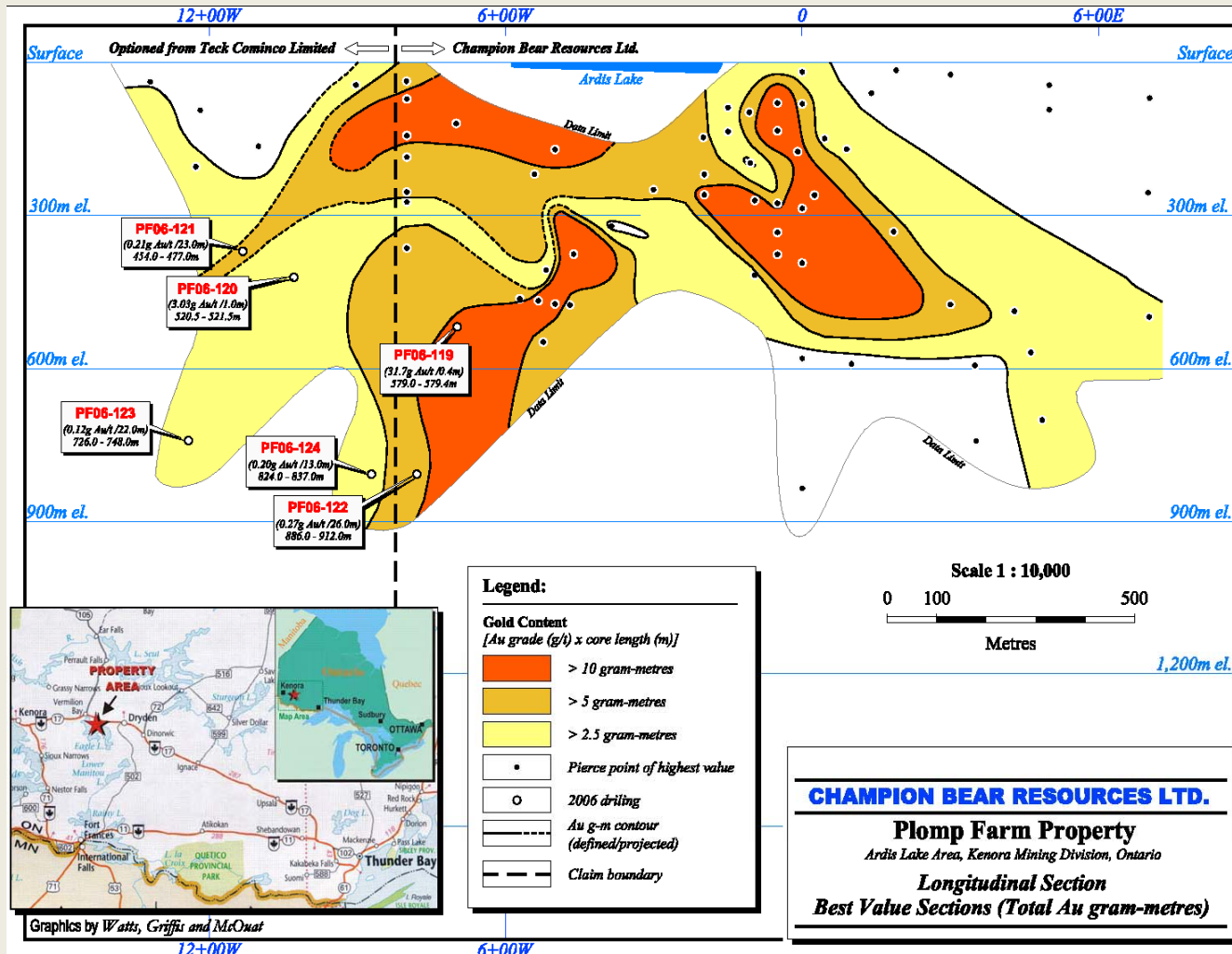
Drilling has outlined a broad corridor of gold enrichment associated with pyrite and elevated silver and base metals (Cu-Zn-Mo and Ba) concentrations.

The geological environment shares characteristics of both Hemlo-type (high strain, pyritic gold in turbiditic and felsic volcanics) and Au-rich VMS deposits (elevated Zn-Pb-Ag in altered felsic volcanics).



PLOMP FARM GOLD

Dryden, Ontario



Plomp Farm Main Zone, Vertical Longitudinal Projection

PROPERTY

Covers most of 20km long gold trend west of Dryden,
100% owned
Includes Plomp Farm Main Zone
Lies west of Thunder Creek Gold

GEOLOGY

Similar to Hemlo-style – pyritic Gold,
Au-rich VMS associated with felsic volcanics

PREVIOUS RESULTS

Drilling defines possible plunging Gold shoots

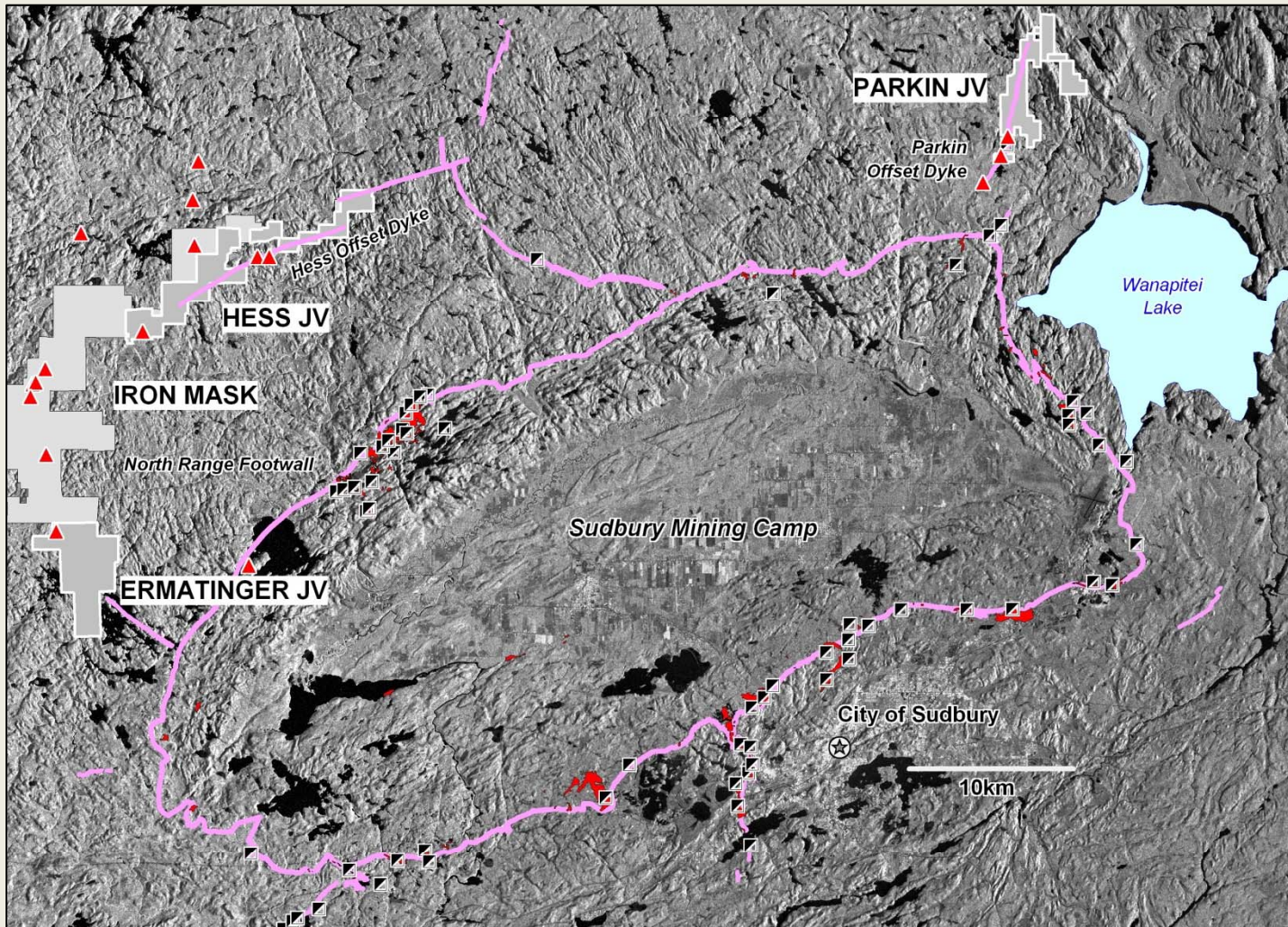
2010 PLANS

Continue to Drill Test extensions of the Gold shoots



SUDBURY AREA PROJECTS

Sudbury Mining Camp



Sudbury Footwall Projects

PROPERTY

Four large properties covering favourable Sudbury Footwall geological environment
Joint Ventures with strategic partners

GEOLOGY

Sudbury Mining Camp
Properties cover portions of 3 Offset Dykes and zones of Sudbury Breccia

High Value Sudbury Footwall Ore

PARKIN JV

Active – New Discovery by Wallbridge on adjacent property

NORTH RANGE FOOTWALL

IRON MASK – several occurrences, possible extension of Hess Offset Dyke

HESS JV – actively being explored by JV partner Wallbridge

ERMANTINGER JV – possible extension of Ministic Offset Dyke

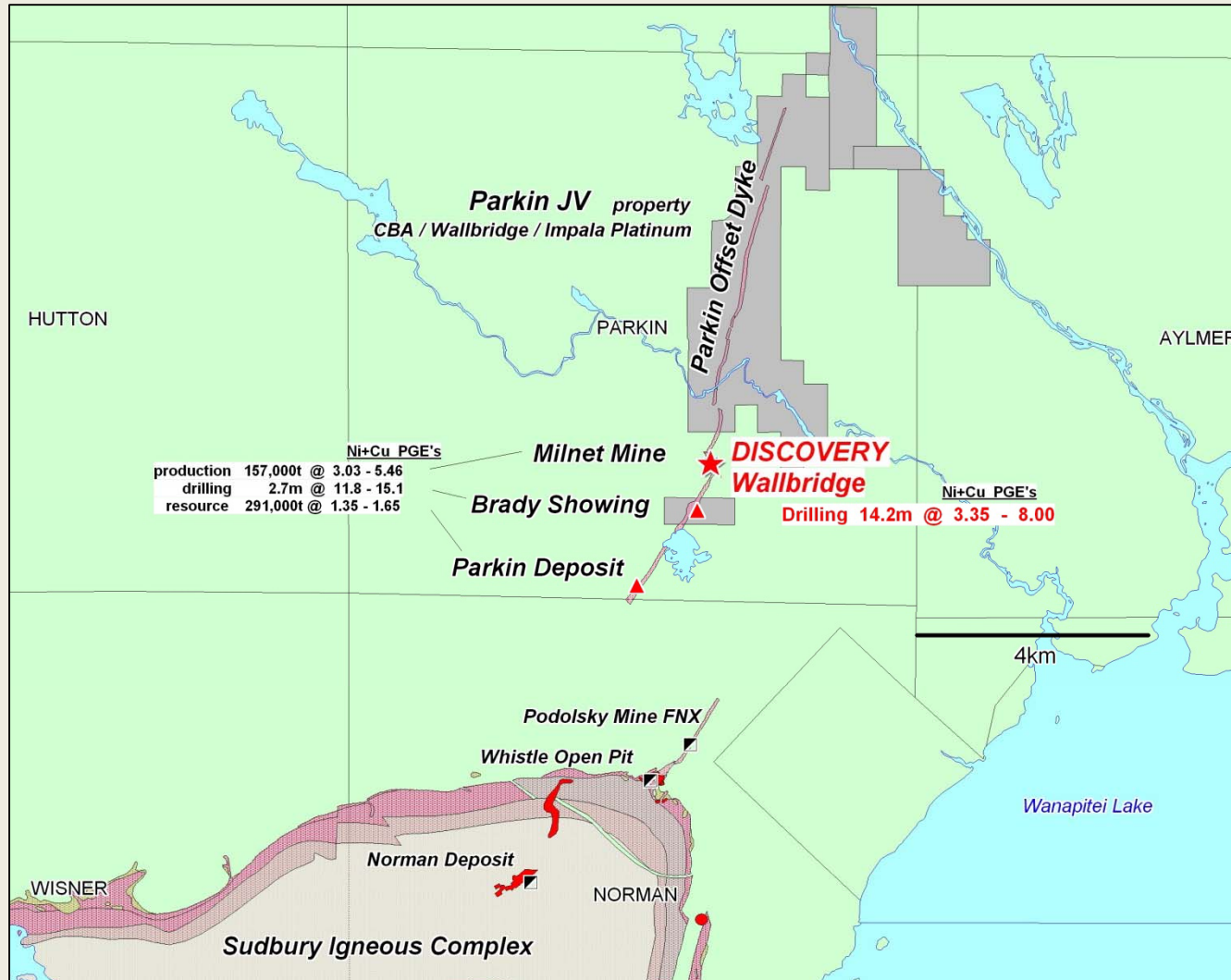
2010 PLANS

Continue Drilling at Parkin
Continue exploration on North Range properties



PARKIN JV Ni-Cu-PGE

Sudbury Mining Camp



Parkin Offset Dyke, NE Sudbury Mining Camp

PROPERTY

Large 9 x 3km,
Optioned to Wallbridge and Impala
Platinum of South Africa
Includes Brady Property
Carried interest to Production

GEOLOGY

Sudbury Mining Camp
Parkin Offset Dyke
Near FNX Podolsky Mine

High Value Sudbury Footwall Ore

BRADY PROPERTY

Hosts Brady Showing
Covers strategic portion of Offset Dyke
Overlies important conductive trend

2009 RESULTS

New Discover by Wallbridge on
adjacent Claim

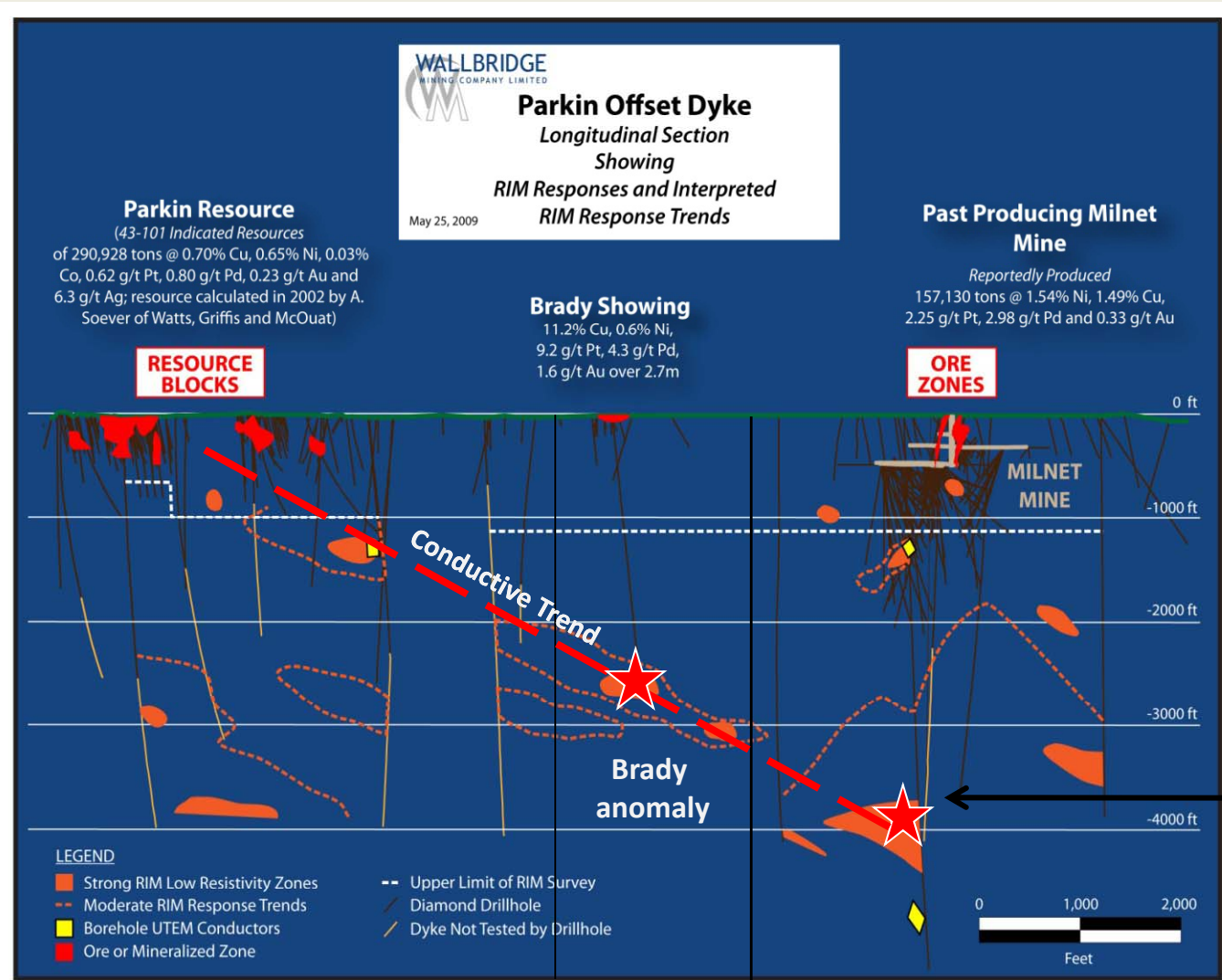
2010 PLANS

Continue Drilling at Brady property
Lies up-plunge of new Discovery



PARKIN JV Ni-Cu-PGE

Sudbury, Ontario



Parkin Offset Dyke Longitudinal Section

2009 RESULTS: NEW DISCOVERY by WALLBRIDGE

lies along conductive trend down-plunge of Brady Property.

High Value Metal content of both
Precious and Base Metals

Typical Sudbury Footwall Ore

2010 PLANS

Wallbridge continues to Drill New
Discovery

Plan to Drill at Brady in early 2010

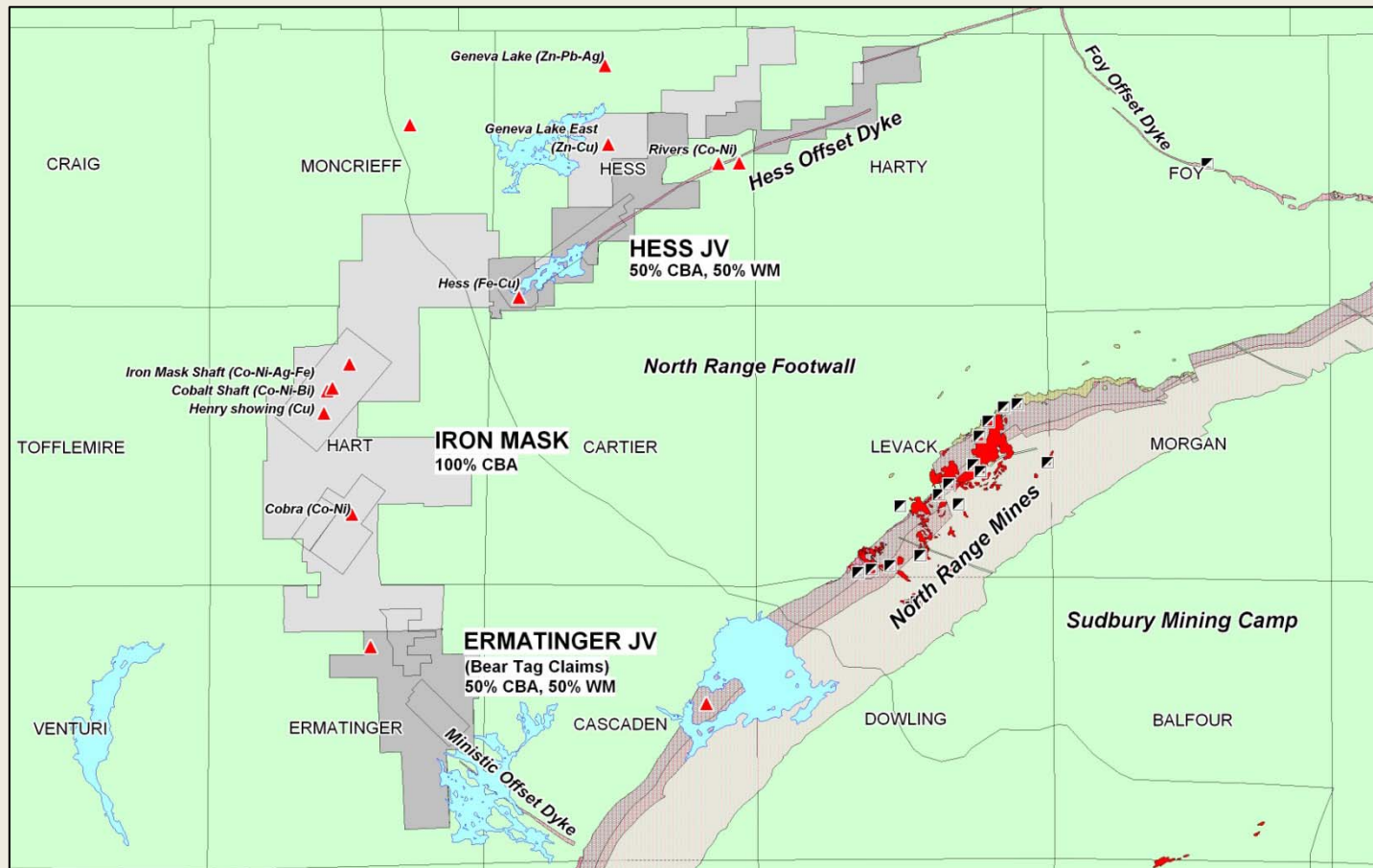
New Discovery By Wallbridge

2.57% Cu – 0.78% Ni
4.0g/t Au – 1.5g/t Pt – 2.5g/t Pd / 14.2m



NORTH RANGE FOOTWALL Ni-Cu-PGE

Sudbury Mining Camp



North Range Footwall property map, NW Sudbury Mining Camp

PROPERTY

Three contiguous properties overlie
40km of favourable Sudbury Footwall
100% Iron Mask
50% Hess JV, Ermatinger JV
50% Wallbridge

GEOLOGY

Sudbury Mining Camp Footwall
Overlie portions of the Hess Offset
Dyke and Ministic Offset dyke
extension.

Sudbury Breccia sulphide

IRON MASK

Several metal-rich (Cu-Ni-Co) showings
Possible extension of Hess Offset

HESS JV

JV partner Wallbridge actively exploring
known and new Offset dykes

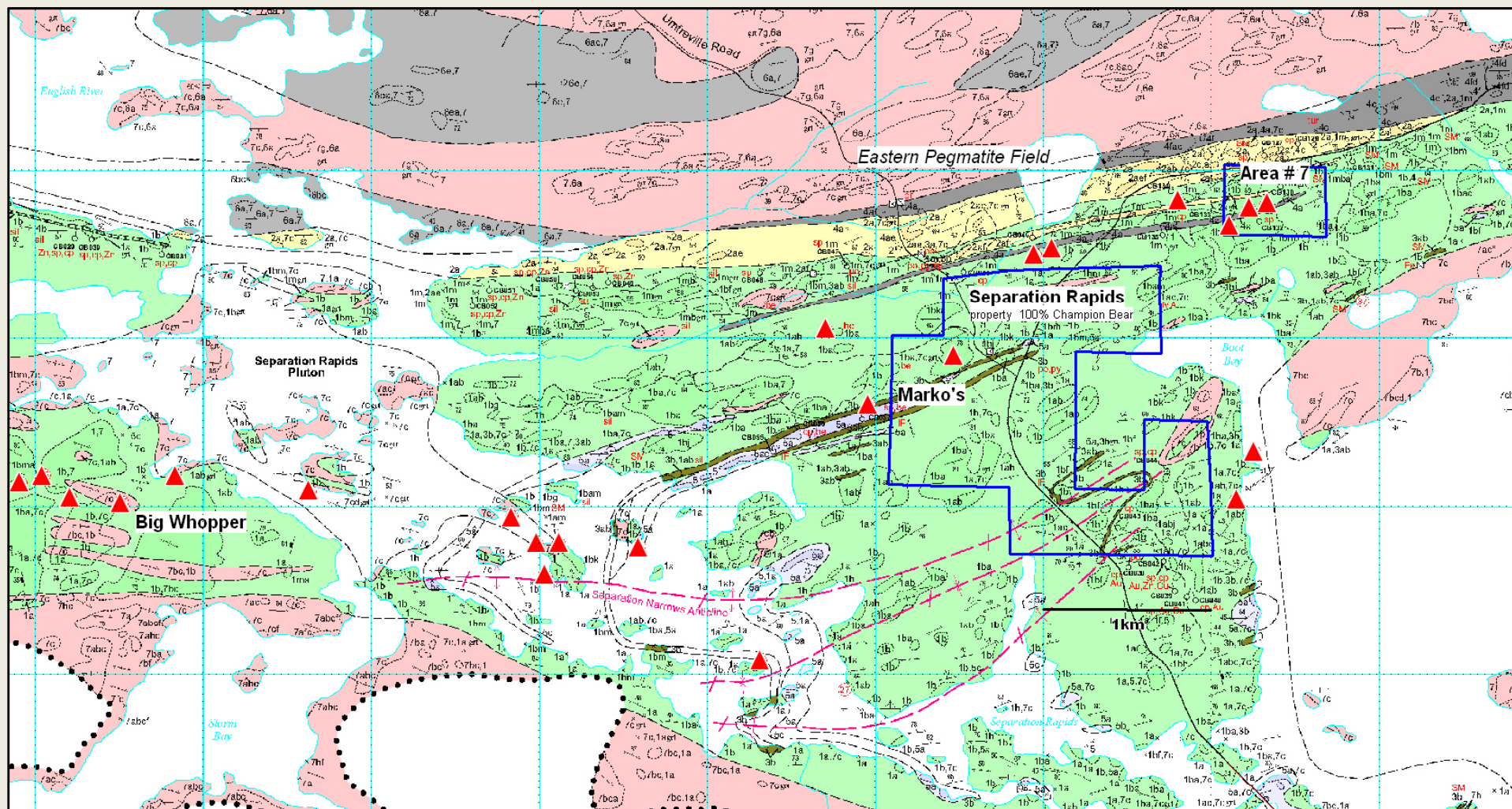
ERMATINGER JV

Possible extension of Ministic Offset
Dyke



SEPARATION RAPIDS LITHIUM

Dryden, NW Ontario



Separation Rapids property map, 55km N of Dryden, NW Ontario

PROPERTY

Covers several Lithium pegmatite showings including Marko's and Area #7. 100% Champion Bear.

GEOLOGY

Lies in the East Pegmatite Field, 5km east of the Big Whopper Deposit (11.6Mn t @ 1.34% Li₂O). Marko's and Marko's North Pegmatites are known over 170m of strike. Both host Petalite-rich (LiAlSi₄O₁₀) and oxide (Ta-rich) units.



PLANS for 2010

Ontario Projects

EAGLE ROCK -- Cu-PGE

- **Campbell Zone Drilling (3000-5000m)**
 - continue to extend sulphide mineralization to the northwest and down-dip of high grade intersection ER09-19
 - define extent of Zone in un-drilled, open areas to the southeast and downdip of mineralized intersections
- **Western Lobe Sulphide Trend and Eastern “Tail” of Complex**
 - *High-Resolution Airborne Magnetics (HRAM)* survey to identify sulphide/mag high trend
 - *Target Generation for Drilling* – prospecting, geological mapping, ground geophysical surveys

PARKIN JV -- Ni-Cu-PGE

- **Brady Zone Drilling**
 - continue to test up-plunge of New Discovery by Wallbridge
 - 100% carried interest by Joint Venture – Impala-funded

PLOMP FARM -- Au

- **Main Zone Drilling (2000-3000m)**
 - continue to down-plunge extensions of the Gold Zones

Ontario-Focused

High Value Precious Metal-Focused

