



CHAMPION BEAR RESOURCES LTD.



Advancing Plomp Farm Gold Deposit to update Feb 2018 Initial Mineral Resource Estimate and drilling Eagle Rock Cu-PGM project for Initial Mineral Resource Estimate



Infill Drilling Program ~5,000 meters plus re-sampling ~35,000 meters of unsplit historical core from 125 drill holes on Plomp Farm Au deposit to update Mineral Resource (Hybrid VMS Gold Deposit)



Infill Drilling Program ~2,000 meters and conducting airborne survey moving towards 2018 Initial Mineral Resource Estimate at Eagle Rock Cu-Pd-Ni-Pt-Au-Co-Ag project (Multi-phase sanukitoid intrusive complex)

March 2018

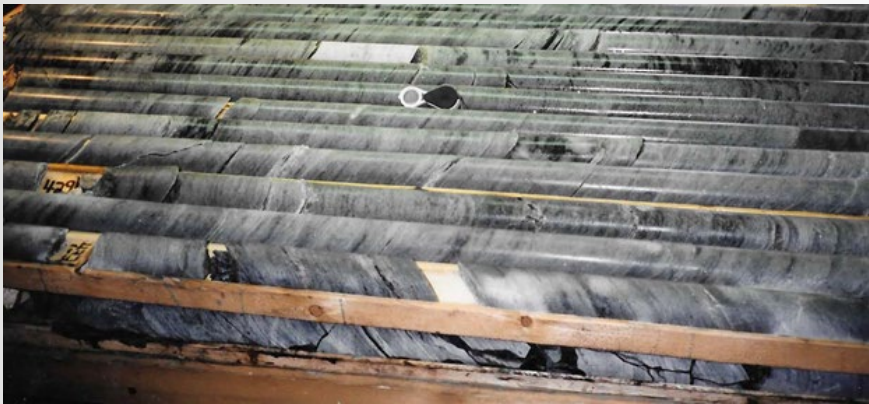


CAUTIONARY STATEMENT ON FORWARD-LOOKING INFORMATION

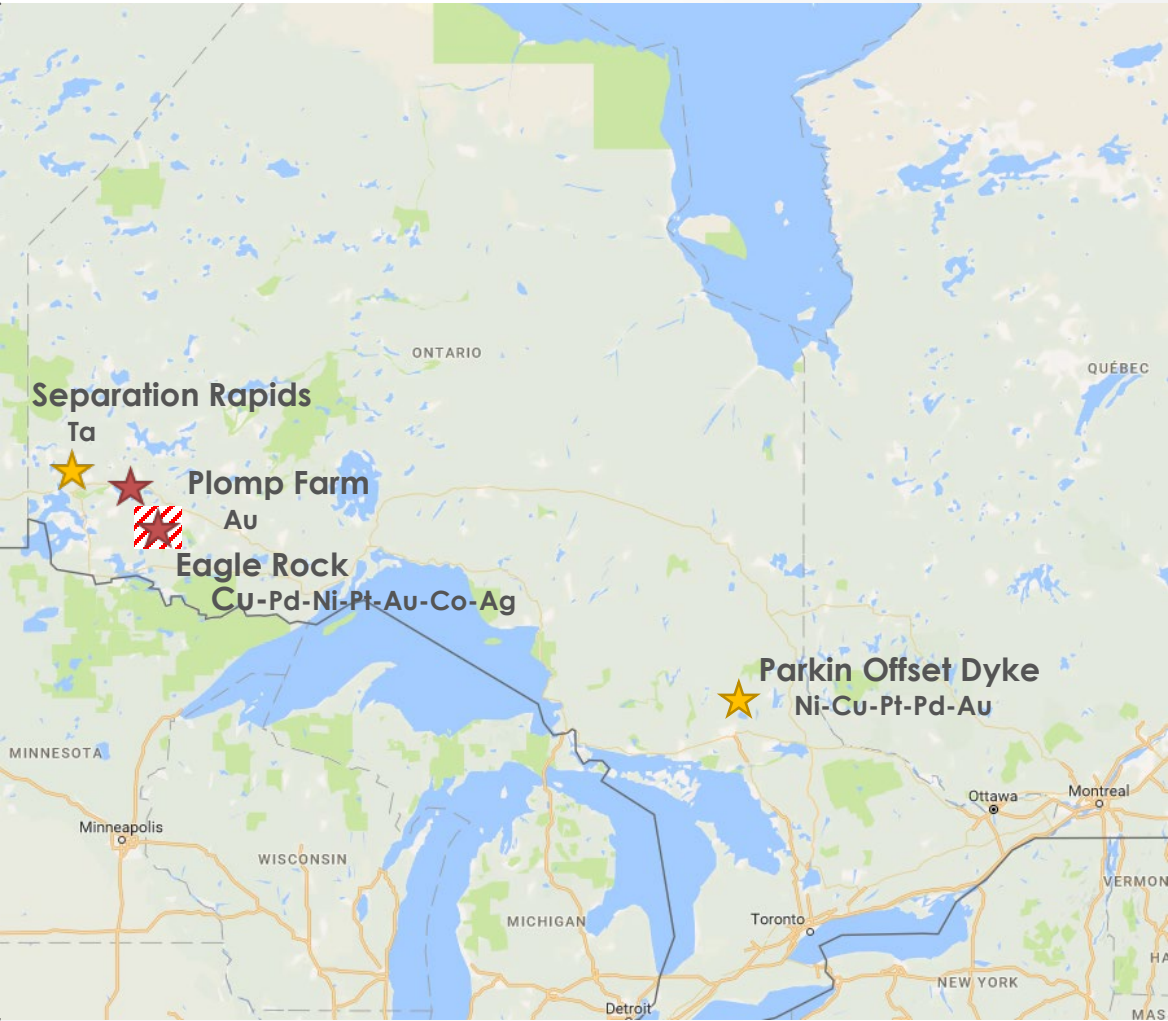
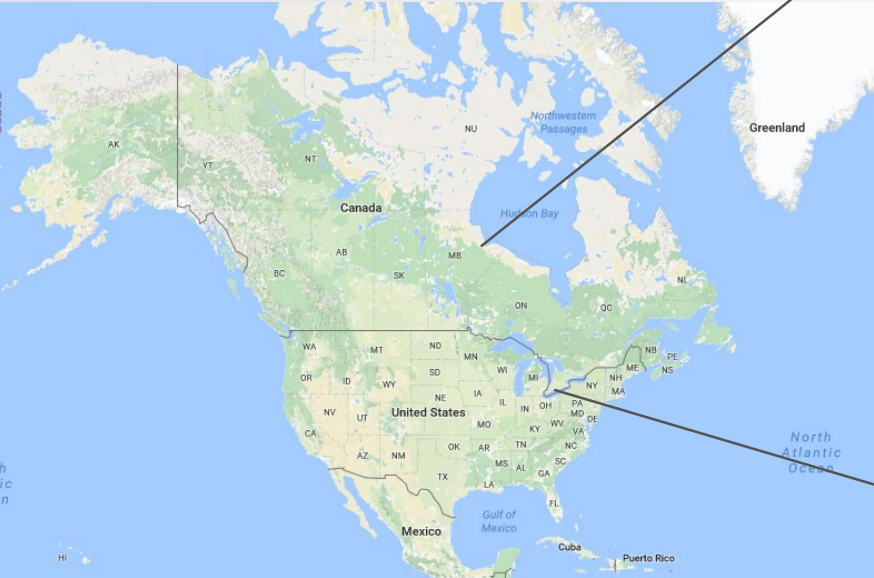
CERTAIN INFORMATION CONTAINED IN THIS PRESENTATION, INCLUDING ANY INFORMATION AS TO OUR STRATEGY, PROJECTS, PLANS OR FUTURE FINANCIAL OR OPERATING PERFORMANCE, CONSTITUTES "FORWARD-LOOKING STATEMENTS". ALL STATEMENTS, OTHER THAN STATEMENTS OF HISTORICAL FACT, ARE FORWARD-LOOKING STATEMENTS. THE WORDS "BELIEVE", "EXPECT", "ANTICIPATE", "CONTEMPLATE", "TARGET", "PLAN", "OBJECTIVE", "ASPIRATION", "AIM", "INTEND", "PROJECT", "GOAL", "CONTINUE", "BUDGET", "ESTIMATE", "POTENTIAL", "MAY", "WILL", "CAN", "SHOULD", "COULD", "WOULD" AND SIMILAR EXPRESSIONS IDENTIFY FORWARD-LOOKING STATEMENTS. IN PARTICULAR, THIS PRESENTATION CONTAINS FORWARD-LOOKING STATEMENTS INCLUDING, WITHOUT LIMITATION, WITH RESPECT TO: (I) CHAMPION BEAR'S FORWARD-LOOKING PRODUCTION GUIDANCE; (II) ESTIMATES OF FUTURE ALL-IN-SUSTAINING COSTS PER OUNCE; (III) CASH FLOW FORECASTS; (IV) PROJECTED CAPITAL, OPERATING AND EXPLORATION EXPENDITURES; (V) TARGETED DEBT AND COST REDUCTIONS; (VI) MINE LIFE AND PRODUCTION RATES; (VII) POTENTIAL MINERALIZATION AND METAL OR MINERAL RECOVERIES; (VII) TIMING AND COMPLETION OF ACQUISITIONS; (IX) NON-CORE ASSET SALES OR JOINT VENTURES; (X) EXPECTATIONS REGARDING FUTURE PRICE ASSUMPTIONS, FINANCIAL PERFORMANCE AND OTHER OUTLOOK OR GUIDANCE; AND (XI) THE ESTIMATED TIMING AND CONCLUSIONS OF TECHNICAL REPORTS AND OTHER STUDIES. FORWARD-LOOKING STATEMENTS ARE NECESSARILY BASED UPON A NUMBER OF ESTIMATES AND ASSUMPTIONS; INCLUDING MATERIAL ESTIMATES AND ASSUMPTIONS RELATED TO THE FACTORS SET FORTH BELOW THAT, WHILE CONSIDERED REASONABLE BY THE COMPANY AS AT THE DATE OF THIS PRESENTATION IN LIGHT OF MANAGEMENT'S EXPERIENCE AND PERCEPTION OF CURRENT CONDITIONS AND EXPECTED DEVELOPMENTS, ARE INHERENTLY SUBJECT TO SIGNIFICANT BUSINESS, ECONOMIC AND COMPETITIVE UNCERTAINTIES AND CONTINGENCIES. KNOWN AND UNKNOWN FACTORS COULD CAUSE ACTUAL RESULTS TO DIFFER MATERIALLY FROM THOSE PROJECTED IN THE FORWARD-LOOKING STATEMENTS AND UNDUE RELIANCE SHOULD NOT BE PLACED ON SUCH STATEMENTS AND INFORMATION. SUCH FACTORS INCLUDE, BUT ARE NOT LIMITED TO: FLUCTUATIONS IN THE SPOT AND FORWARD PRICE OF GOLD, COPPER OR CERTAIN OTHER COMMODITIES (SUCH AS SILVER, DIESEL FUEL, NATURAL GAS AND ELECTRICITY); THE SPECULATIVE NATURE OF MINERAL EXPLORATION AND DEVELOPMENT; CHANGES IN MINERAL PRODUCTION PERFORMANCE, EXPLOITATION AND EXPLORATION SUCCESSES; RISKS ASSOCIATED WITH THE STUDIES STILL IN THE EARLY STAGES OF EVALUATION AND ADDITIONAL ENGINEERING AND OTHER ANALYSIS IS REQUIRED TO FULLY ASSESS THEIR IMPACT; DIMINISHING QUANTITIES OR GRADES OF RESERVES; INCREASED COSTS, DELAYS, SUSPENSIONS AND TECHNICAL CHALLENGES ASSOCIATED WITH THE CONSTRUCTION OF CAPITAL PROJECTS; OPERATING OR TECHNICAL DIFFICULTIES IN CONNECTION WITH MINING OR DEVELOPMENT ACTIVITIES, INCLUDING GEOTECHNICAL CHALLENGES AND DISRUPTIONS IN THE MAINTENANCE OR PROVISION OF REQUIRED INFRASTRUCTURE AND INFORMATION TECHNOLOGY SYSTEMS; FAILURE TO COMPLY WITH ENVIRONMENTAL AND HEALTH AND SAFETY LAWS AND REGULATIONS; TIMING OF RECEIPT OF, OR FAILURE TO COMPLY WITH, NECESSARY PERMITS AND APPROVALS; UNCERTAINTY WHETHER SOME OR ALL OF THE STUDIES AND INVESTMENTS TARGETED BY CHAMPION BEAR WILL MEET THE COMPANY'S CAPITAL ALLOCATION OBJECTIVES; THE IMPACT OF GLOBAL LIQUIDITY AND CREDIT AVAILABILITY ON THE TIMING OF CASH FLOWS AND THE VALUES OF ASSETS AND LIABILITIES BASED ON PROJECTED FUTURE CASH FLOWS; ADVERSE CHANGES IN OUR CREDIT RATINGS; THE IMPACT OF INFLATION; FLUCTUATIONS IN THE CURRENCY MARKETS; CHANGES IN INTEREST RATES; RISKS ARISING FROM HOLDING DERIVATIVE INSTRUMENTS; CHANGES IN NATIONAL AND LOCAL GOVERNMENT LEGISLATION, TAXATION, CONTROLS OR REGULATIONS AND/OR CHANGES IN THE ADMINISTRATION OF LAWS, POLICIES AND PRACTICES, EXPROPRIATION OR NATIONALIZATION OF PROPERTY AND POLITICAL OR ECONOMIC DEVELOPMENTS IN CANADA WHICH THE COMPANY DOES CARRY ON BUSINESS IN THE FUTURE; LACK OF CERTAINTY WITH RESPECT TO DOMESTIC LEGAL SYSTEMS, CORRUPTION AND OTHER FACTORS THAT ARE INCONSISTENT WITH THE RULE OF LAW; DAMAGE TO THE COMPANY'S REPUTATION DUE TO THE ACTUAL OR PERCEIVED OCCURRENCE OF ANY NUMBER OF EVENTS, INCLUDING NEGATIVE PUBLICITY WITH RESPECT TO THE COMPANY'S HANDLING OF ENVIRONMENTAL MATTERS OR DEALINGS WITH COMMUNITY GROUPS, WHETHER TRUE OR NOT; RISK OF LOSS DUE TO ACTS OF WAR, TERRORISM, SABOTAGE AND CIVIL DISTURBANCES; LITIGATION; CONTESTS OVER TITLE TO PROPERTIES, PARTICULARLY TITLE TO UNDEVELOPED PROPERTIES, OR OVER ACCESS TO WATER, POWER AND OTHER REQUIRED INFRASTRUCTURE; BUSINESS OPPORTUNITIES THAT MAY BE PRESENTED TO, OR PURSUED BY, THE COMPANY; OUR ABILITY TO SUCCESSFULLY INTEGRATE ACQUISITIONS OR COMPLETE DIVESTITURES; RISKS ASSOCIATED WITH WORKING WITH PARTNERS IN JOINTLY CONTROLLED ASSETS; EMPLOYEE RELATIONS INCLUDING LOSS OF KEY EMPLOYEES; INCREASED COSTS AND PHYSICAL RISKS, INCLUDING EXTREME WEATHER EVENTS AND RESOURCE SHORTAGES, RELATED TO CLIMATE CHANGE; AVAILABILITY AND INCREASED COSTS ASSOCIATED WITH MINING INPUTS AND LABOR. IN ADDITION, THERE ARE RISKS AND HAZARDS ASSOCIATED WITH THE BUSINESS OF MINERAL EXPLORATION, DEVELOPMENT AND MINING, INCLUDING ENVIRONMENTAL HAZARDS, INDUSTRIAL ACCIDENTS, UNUSUAL OR UNEXPECTED FORMATIONS, PRESSURES, CAVE-INS, FLOODING AND GOLD BULLION, COPPER CATHODE OR GOLD OR COPPER OR PGM OR RARE EARTH CONCENTRATE LOSSES (AND THE RISK OF INADEQUATE INSURANCE, OR INABILITY TO OBTAIN INSURANCE, TO COVER THESE RISKS). MANY OF THESE UNCERTAINTIES AND CONTINGENCIES CAN AFFECT OUR ACTUAL RESULTS AND COULD CAUSE ACTUAL RESULTS TO DIFFER MATERIALLY FROM THOSE EXPRESSED OR IMPLIED IN ANY FORWARD-LOOKING STATEMENTS MADE BY, OR ON BEHALF OF, US. READERS ARE CAUTIONED THAT FORWARD-LOOKING STATEMENTS ARE NOT GUARANTEES OF FUTURE PERFORMANCE. ALL OF THE FORWARD-LOOKING STATEMENTS MADE IN THIS PRESENTATION ARE QUALIFIED BY THESE CAUTIONARY STATEMENTS. SPECIFIC REFERENCE IS MADE TO THE MOST RECENT MD&A FORM AND AUDITED YEAR END FINANCIAL STATEMENTS ON FILE WITH THE CANADIAN PROVINCIAL SECURITIES REGULATORY AUTHORITIES FOR A MORE DETAILED DISCUSSION OF SOME OF THE FACTORS UNDERLYING FORWARD-LOOKING STATEMENTS AND THE RISKS THAT MAY AFFECT CHAMPION BEAR'S ABILITY TO ACHIEVE THE EXPECTATIONS SET FORTH IN THE FORWARD-LOOKING STATEMENTS CONTAINED IN THIS PRESENTATION. THE COMPANY DISCLAIMS ANY INTENTION OR OBLIGATION TO UPDATE OR REVISE ANY FORWARD-LOOKING STATEMENTS WHETHER AS A RESULT OF NEW INFORMATION, FUTURE EVENTS OR OTHERWISE, EXCEPT AS REQUIRED BY APPLICABLE LAW.



CHAMPION BEAR'S PROJECTS



Plomp Farm VMS Deposit NQ Core





Initial Report completed

Initial Report in progress



PROJECT SUMMARIES



- **Initial Mineral Resource Estimate published Feb 5 2018 - INFERRED 107,100 Oz Gold and 38,400 Oz Silver, 2018 focus to expand resource**
 - **Plomp Farm** – Hybrid VMS Gold Deposit. Folded/strained barite-enriched quartz-sericite-sulfide schist unit averaging 15m thick and sericitized felsic tuffs identified with wide spread, distinct Pathfinder elemental signatures. 2 OGS samples testing **1.72 and 2.98 ounces/t Au (53.5 and 92.7 g/t)**. **2.2 km strike length and mineralization to 900 meters TVD and Open on Strike and Depth.** Plan to drill infill program ~5,000 m along with re-sampling ~35,000 meters of unsplit historical core to update Initial Mineral Resource Estimate in 2018. 100% Interest in claims.
- **Advancing to Initial Mineral Resource Estimate in 2018**
 - **Eagle Rock** – Multi-phase sanukitoid intrusive complex host to Cu-Pd-Ni-Pt-Au-Co-Ag mineralization. **PGE dominated by Palladium up to 1.0 g/t.** Drill assays up to **2.19 g/t PGE+Au and 0.92% Cu+Ni over 5 meters** (part of wider interval grading 1.70 g/t TPM+Au and 0.87% Cu+Ni over 13 meters) on potential 12 km trend for Campbell Zone sulfides. Plan to drill infill program ~2,000 m for Initial Mineral Resource Estimate in 2018 and fly an airborne geophysical program. 100% Interest in claims.
- **Non-Operated 2018 Project**
 - **Parkin Offset Dyke** – Metavolcanics within or adjacent to Parkin Offset dyke as high as **44 g/tonne Au over 1.4 m** at 543 meters, shallow BHUTEM and deep RIM anomalies identified in Sudbury Basin Offset dyke, **11.2% Cu, 9.2 g/t Pt, 4.3 g/t Pd and 1.6 g/t Au over 2.7 m** at surface (channel sample of Brady Showing). Non-operated JV activity throughout 2018 expected. 50% Carried Interest in claims converts to loan payable from production revenue.
- **Currently Unfunded, Operated Project**
 - **Separation Rapids** – Petalite pegmatite zone directly east of Big Whopper deposit, area surface widths measured up to 170 meters. Key area mineralization Ta₂O₅, Cs₂O, Rb₂O, SnO₂ and Li₂O. 100% Interest in claims. May fund 2018 activity based on success of equity raise.
- Target Metals – **Au, Pd, Pt, Cu, Ni, Co, Ag, Ta, Li**
- Over \$20MM spent to date on all properties
- All claims in mining friendly, conflict free jurisdiction of Ontario, Canada with ~200 years of mining history.
- **2018 activity to be funded through equity raise(s)**

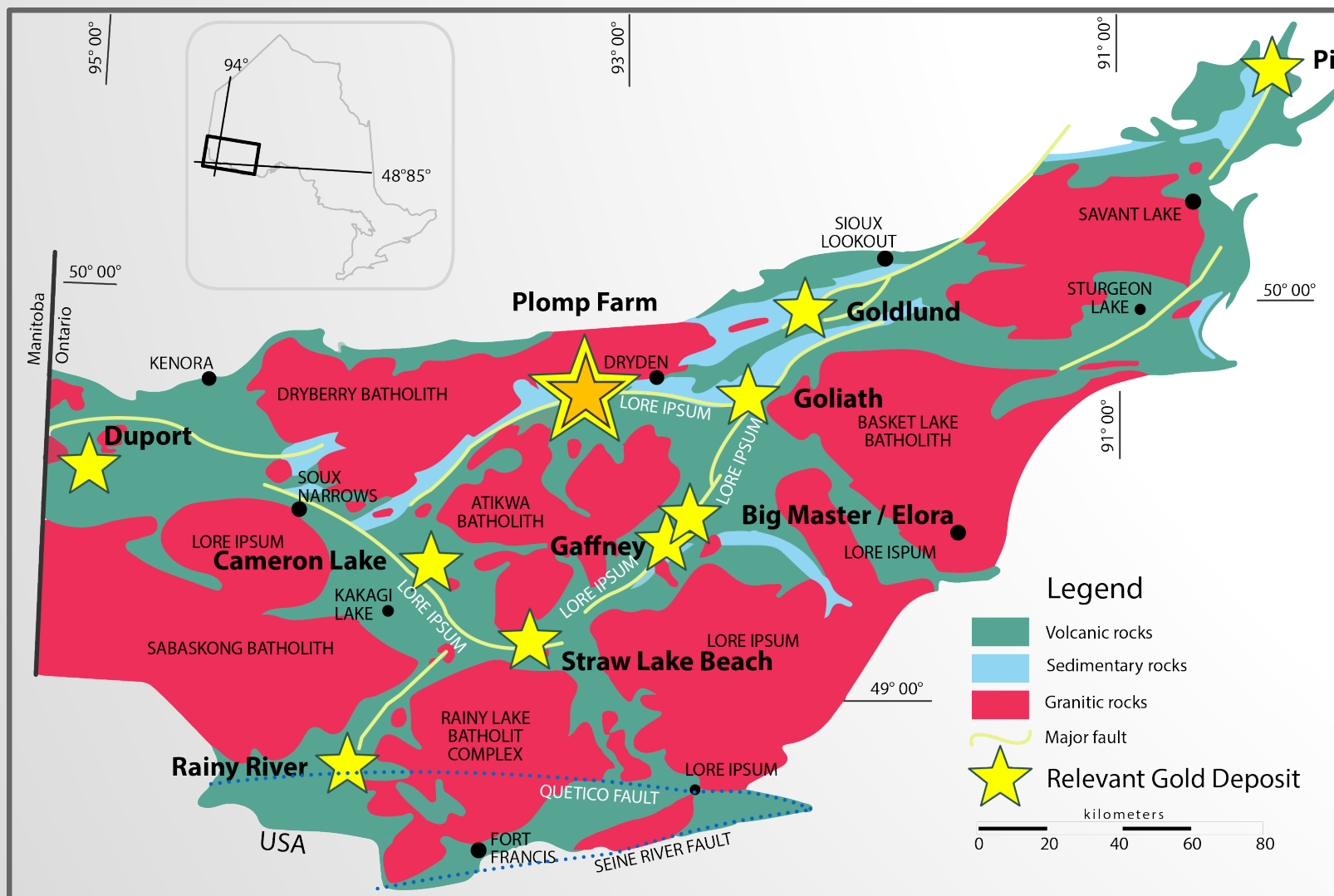


PLOMP FARM QUARTZ SERICITE SCHIST





PLOMP FARM REGIONAL MAP



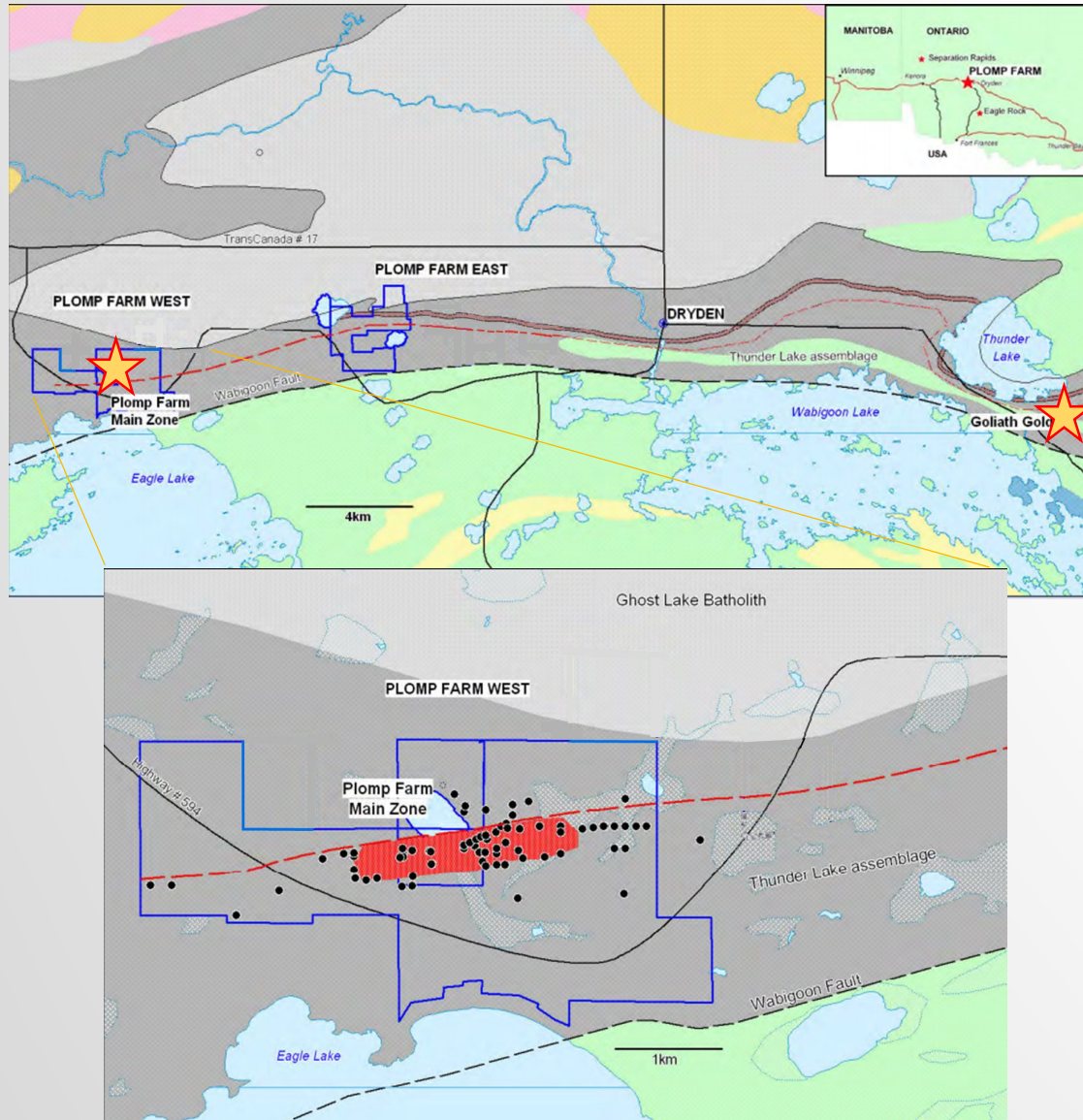
- ~50,000 meters of historical drilling from 125 drill holes and wedges (1994 to 2007)
- “Hemlo and LaRonde like” folded and strained quartz sericite schist Hybrid VMS Gold deposit
- Pathfinder Mineralization Fingerprint (elevated)
 - Ag, Cu, Zn, Pb, Ba, As, Sb, Hg, V, Co, Rb, Ce, Sr

PLOMP FARM OVERVIEW



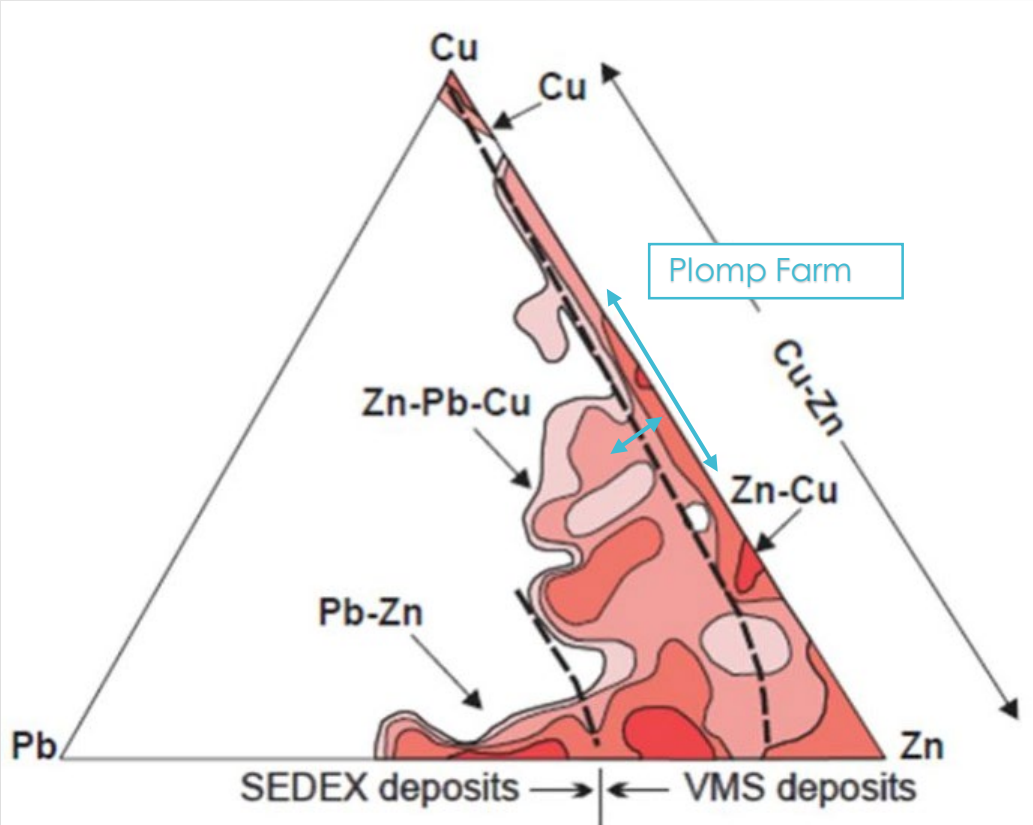
Plomp Farm – Hybrid VMS Gold deposit, Folded/sheared barite-enriched quartz-sericite-sulfide schist unit averaging 15m thick and sericitized felsic tuffs, 2 OGS duplicate samples assayed 1.72 and 2.98 ounces/t Au (53.5 and 92.7 g/t) published 2002 “OGS Open File Report 6079”. 2.2 km strike length and mineralization to 900 meters TVD. Mineralization open at depth and along strike.

- ~4,000 acres 100% working interest claims
- 125 drill holes/wedges drilled to date (50,000 m of core), 1st drilled by INCO in 1970
- All weather paved highway passes through the project, connected to regional electrical grid and both rail and natural gas services less than 3 km north
- The Warclub Group, Thunder Lake assemblage of felsic metavolcanics and metasedimentary rocks hosts the Plomp Farm Zone
- Similar geological features to New Gold Rainy River, Treasury Metals Goliath, Barrick Hemlo, Agnico Eagle LaRonde in Canada
- Todd McCracken P.Geo. (WSP Canada Inc.) Champion Bear's Qualified Person, has reviewed the contents for accuracy and has approved this presentation on behalf of Champion Bear

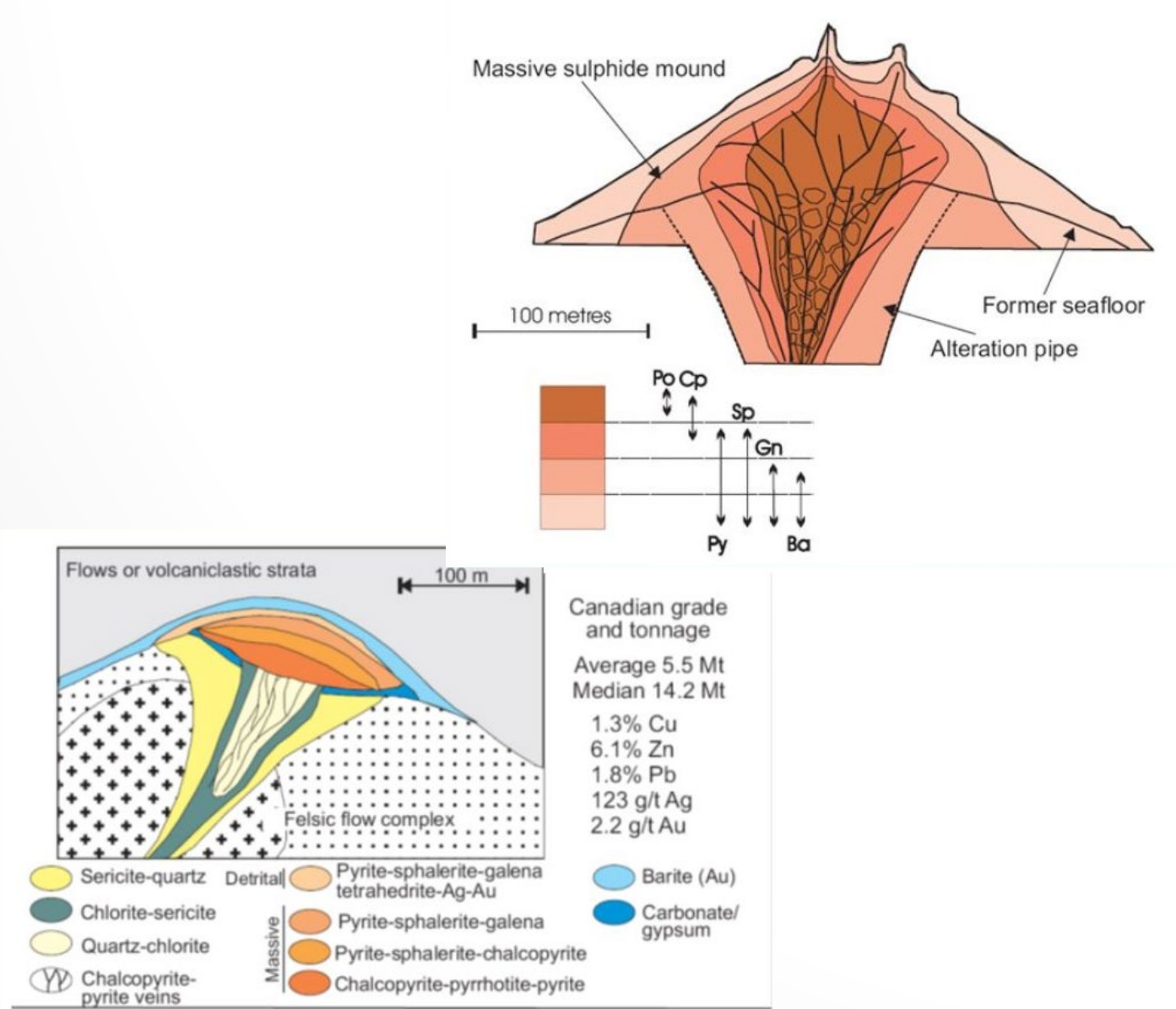




VMS FINGERPRINT AND ENVIRONMENT



World VMS (modified from Franklin 1996)



INITIAL MINERAL RESOURCE ASSESSMENT



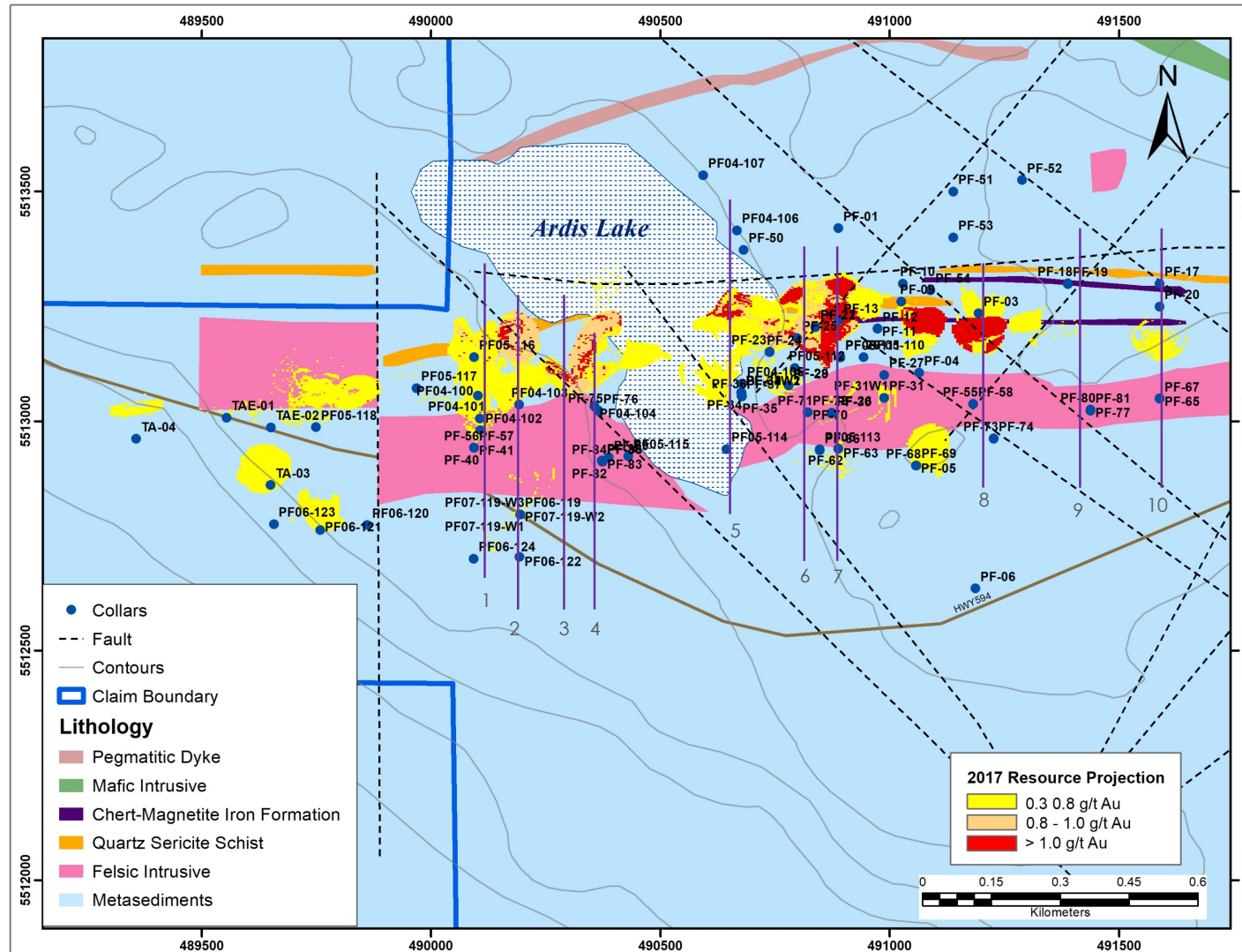
Resource Category	Tonnes	Au (g/t)	Ag (g/t)	Au (oz)	Ag (oz)
INFERRED	5,702,000	0.58	0.21	107,100	38,400

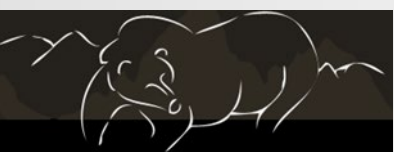
Initial Mineral Resource Estimate (43-101 compliant)

- Published February 5 2018 "Champion Bear Resources Ltd., Plomp Farm, Resource Estimation and Technical Report"
- Evaluated 600 meters of discontinuous strike and 200 meters of depth only in estimate
- Gold and Silver grades are improving with depth
- Hybrid VMS/Magmatic Hydrothermal Archean Load Gold deposit
- Pathfinder elemental suite observable across 2.2 km of strike
- Todd McCracken P.Geo.(WSP Canada Inc.)Champion Bear's Qualified Person, has reviewed the contents for accuracy and has approved this presentation on behalf of Champion Bear

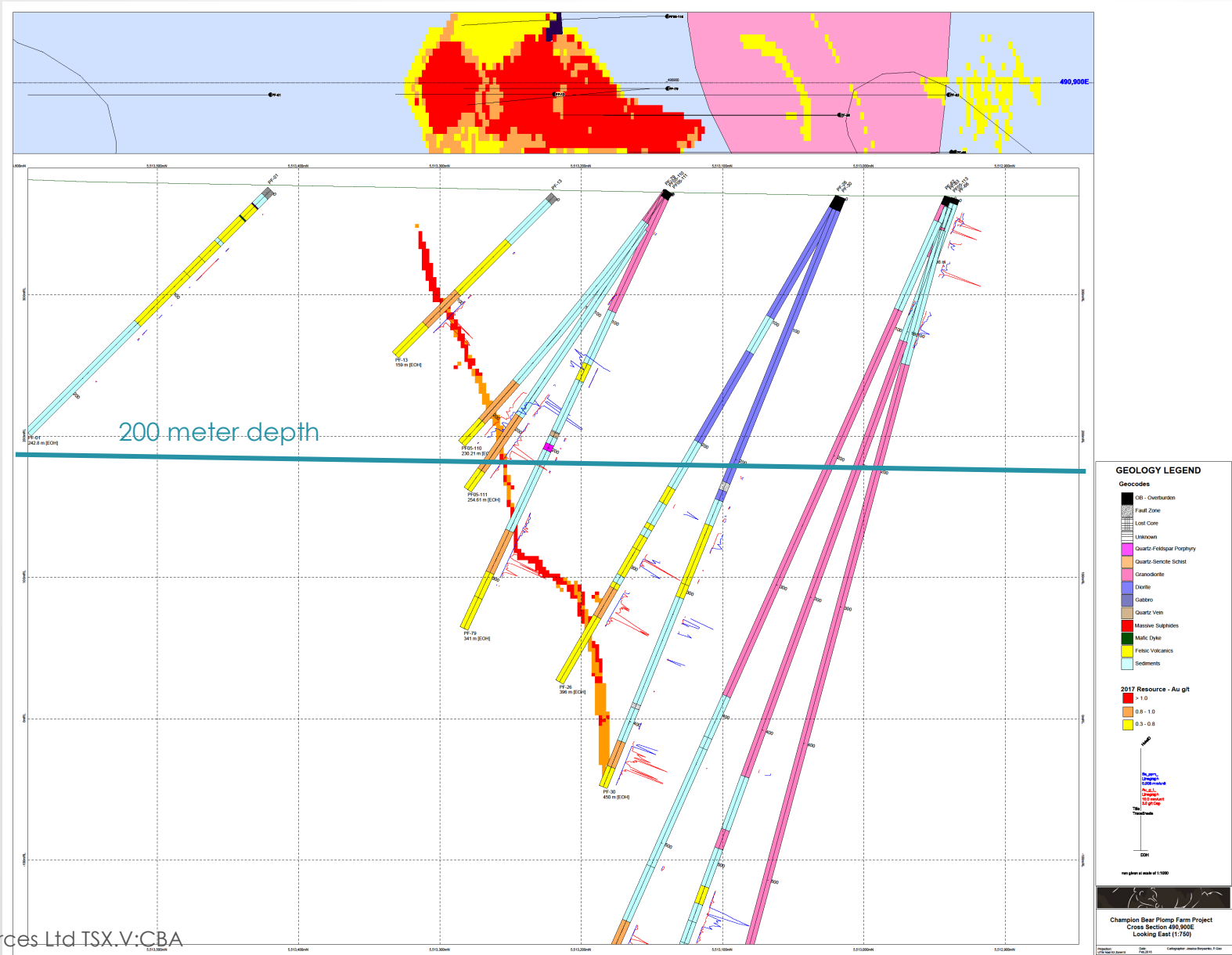
Go Forward Plans for 2018

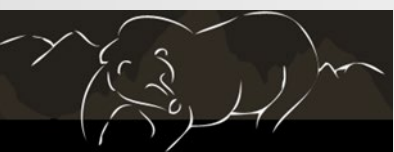
- Infill Drill up to 5,000 meters of diamond drill holes to
 - increase the evaluated strike length within the identified 2.2 km mineralization trend up from current 600 discontinuous meters (~25%)
 - drill deep holes to increase the sample density at depth below the currently evaluated depth of 200 meters. Company has sampled gold at depths to 904 meters and deposit remains open at depth
- Split and sample additional historical core containing the gold bearing quartz sericite schist and sericitized felsic tuffs
- Update the Initial Mineral Resource Estimate in 2018





INITIAL MINERAL RESOURCE ESTIMATE BLOCKS ON XSECTION 7





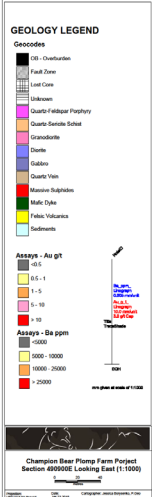
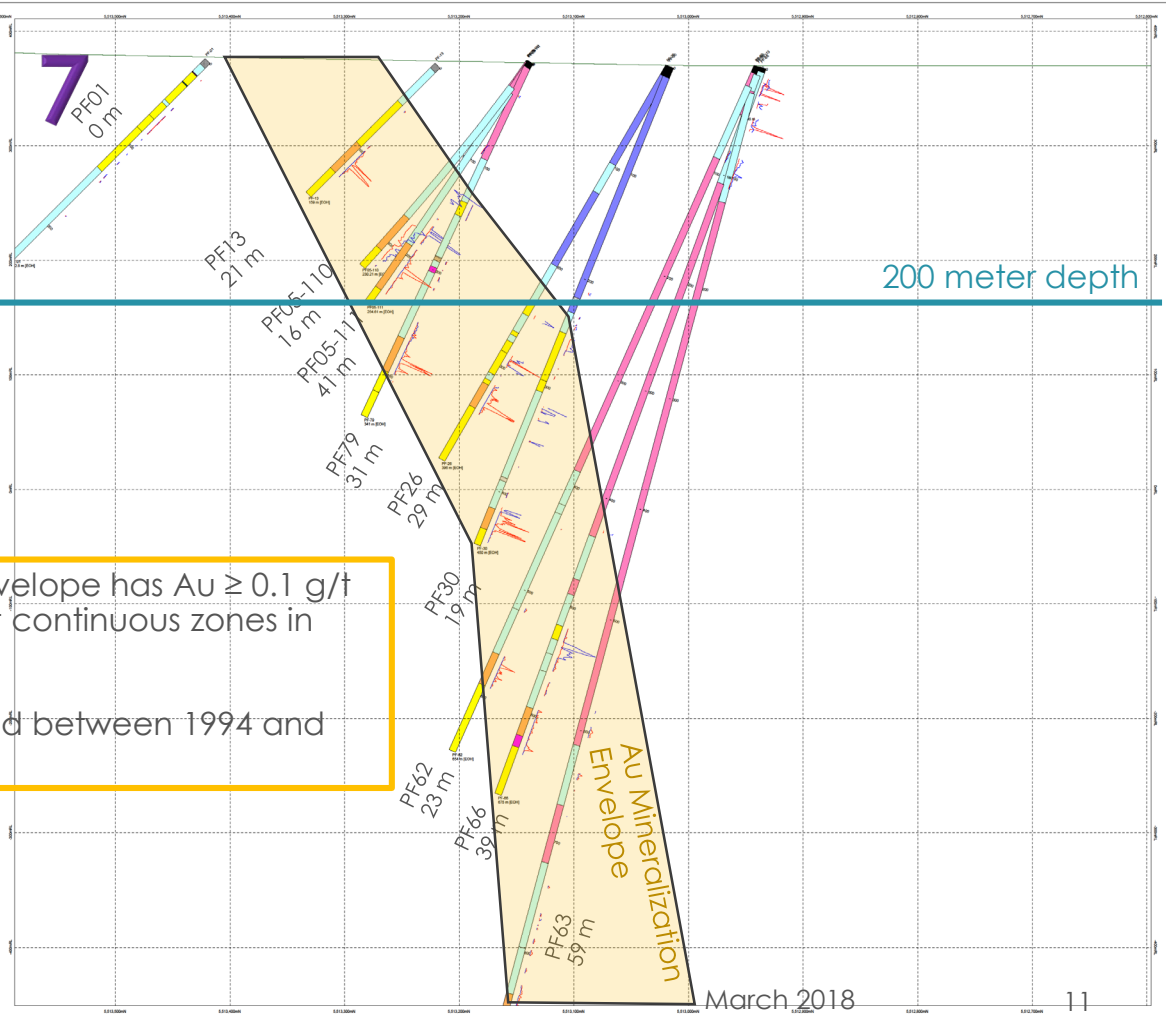
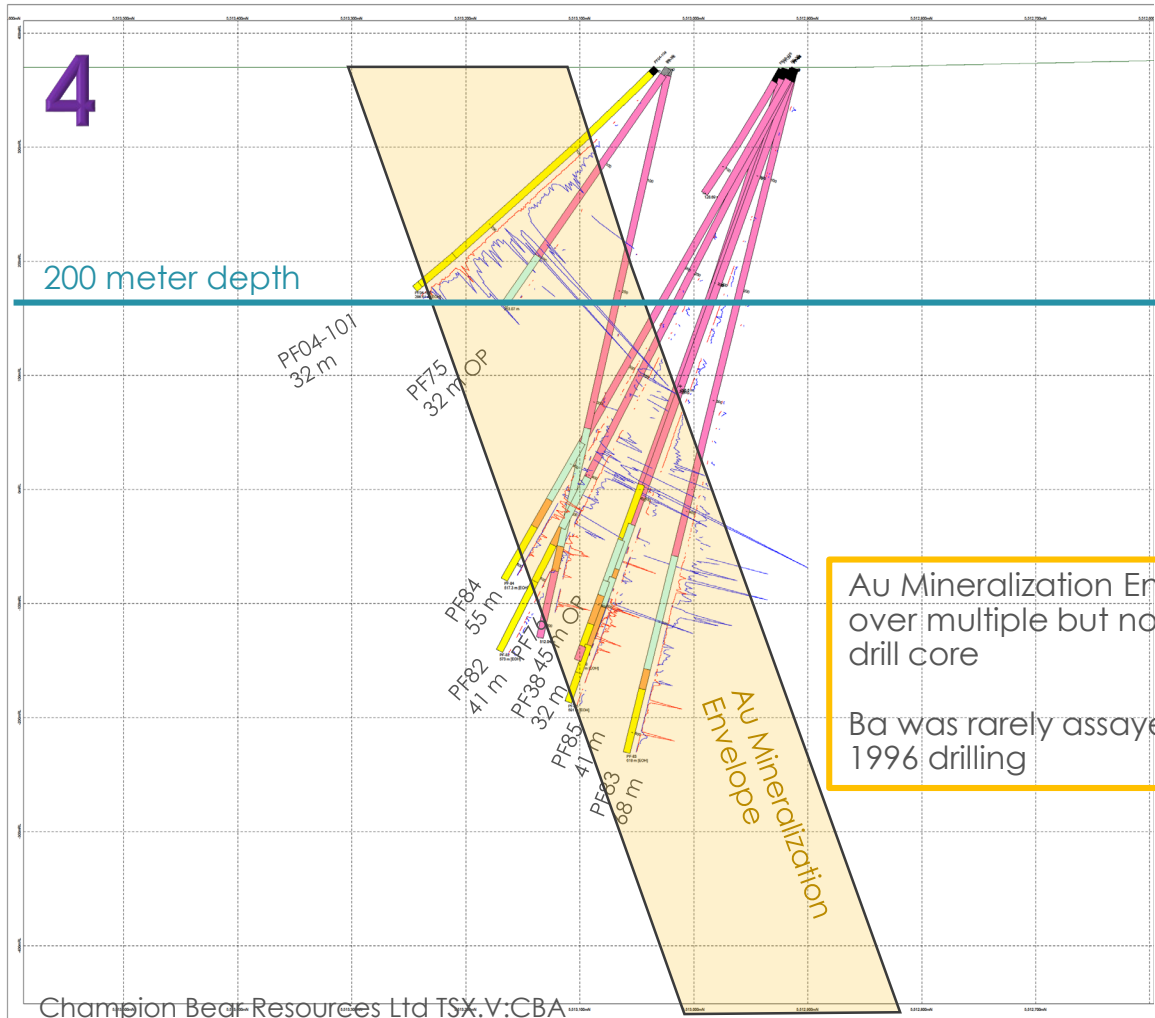
CROSS-SECTIONS – AU ENRICHED ENVELOPE WITH PATHFINDER MINERALIZATION



West
Xsection 4

550 meters

East
Xsection 7

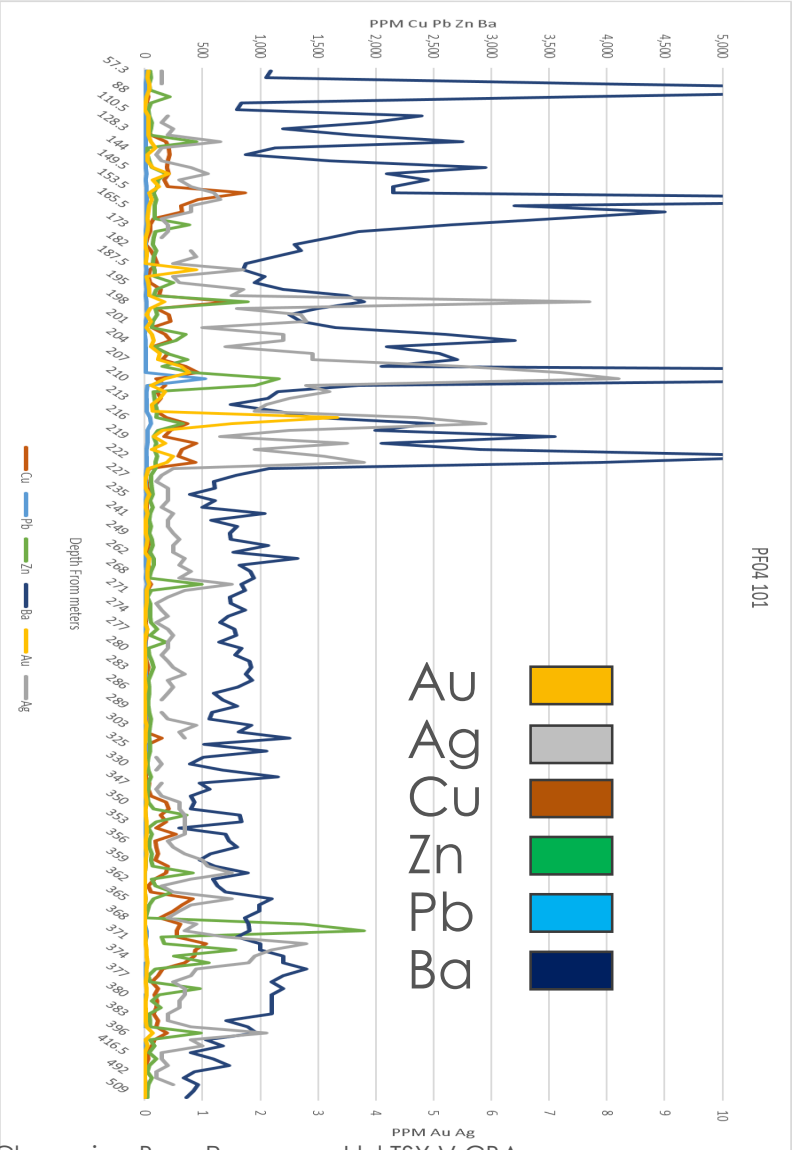




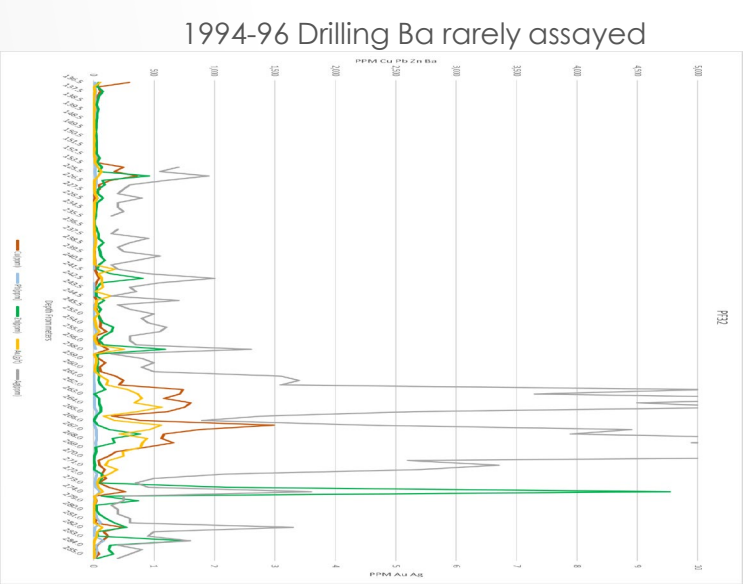
PATHFINDER MINERALIZATION



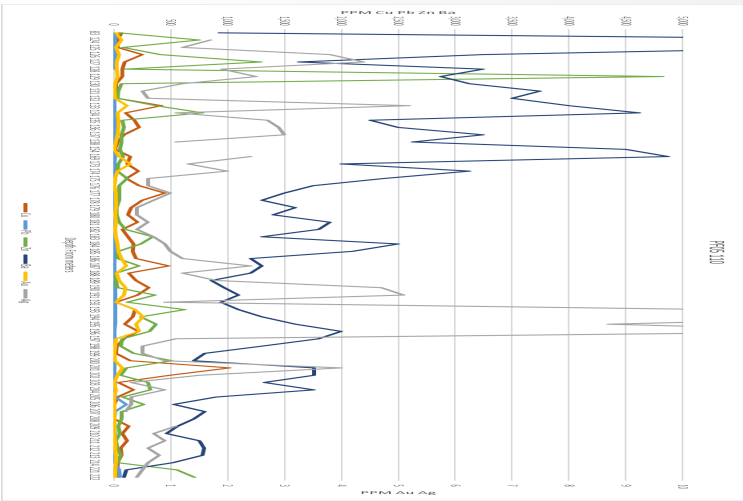
West PF04-101



Central PF32



East PF05-110



Pathfinder Mineralization Suite Averages

Cu>Zn 2.5:1
Zn>Pb 8:1
Ag>Au 18:1
Pb>As 2:1
Mo>Pb 1.5:1
La>Sb 2:1

Pb=V
Au=Hg
Mo=Co=Sr
Ag=Sb

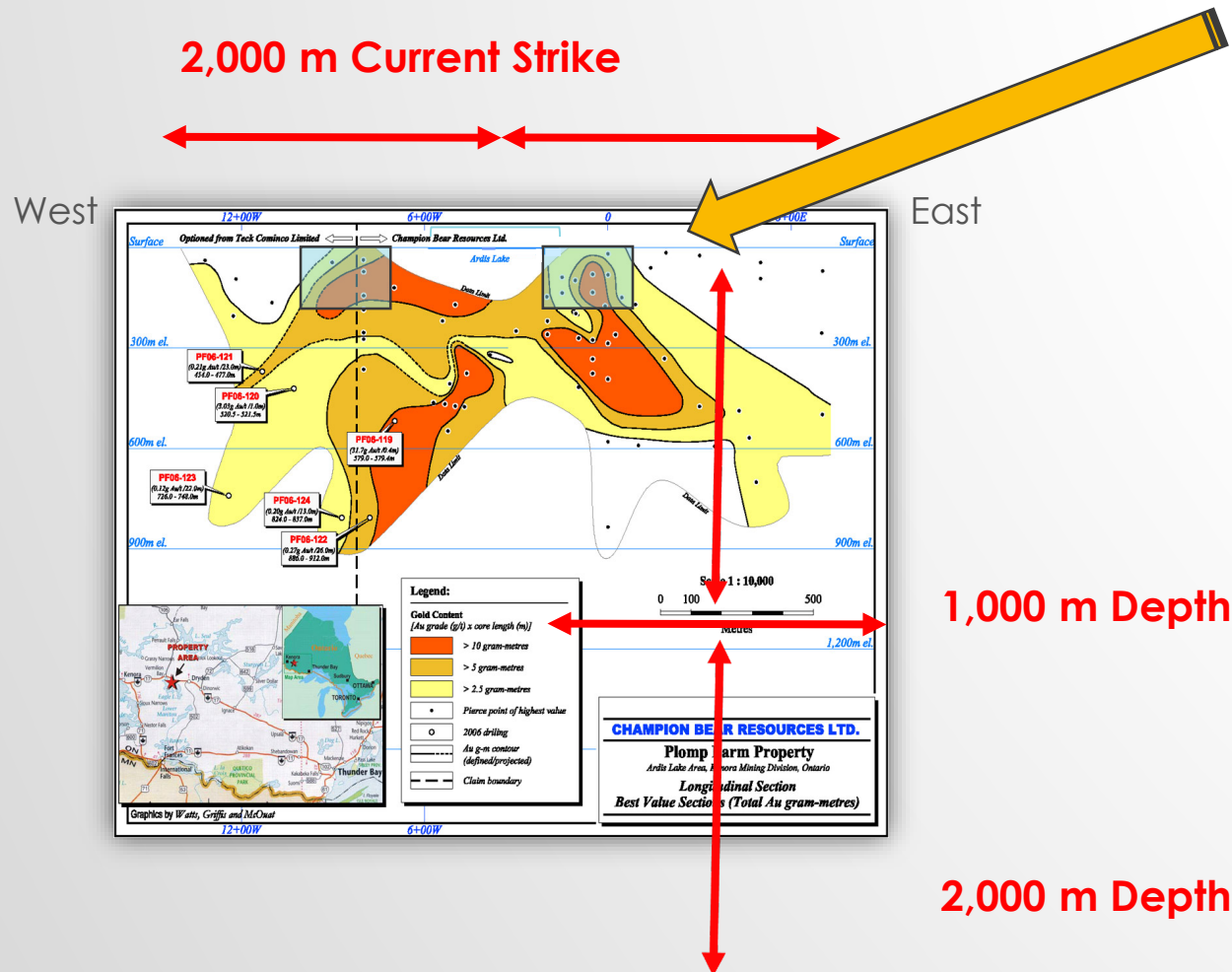
Cu 1,510 ppm
Zn 609
Au 0.5
Ag 10.2
Ba ~2,000
Fe ~4%
K ~2.6%

INITIAL MINERAL RESOURCE ASSESSMENT



Champion Bear
Limited Drilling, Mineralization Open

- Initial Mineral Resource Estimate evaluated only depths to 200 meters and 600 meters of discontinuous strike length approximately illustrated by the blue boxed area on the deposit cross-section
- Champion Bear has gold drilled and sampled to depths of 900 meters and the deposit remains open at depth and on strike.
- WSP noted that Au and Ag grade were identified as increasing with depth
- Future drilling programs will target a number of deeper holes to increase the confidence in the depth of the Plomp Farm deposit to increase both tonnage and grade in the update to the Mineral Resource Estimate in 2018



March 2018



PLOMP FARM CORE



Sheared, altered felsic metavolcanics with andalusite porphyroblasts from Plomp Farm (NQ core)

Current estimated cost to Pre-Feasibility Study \$8 to \$10MM

- Average drill depth = 500 meters

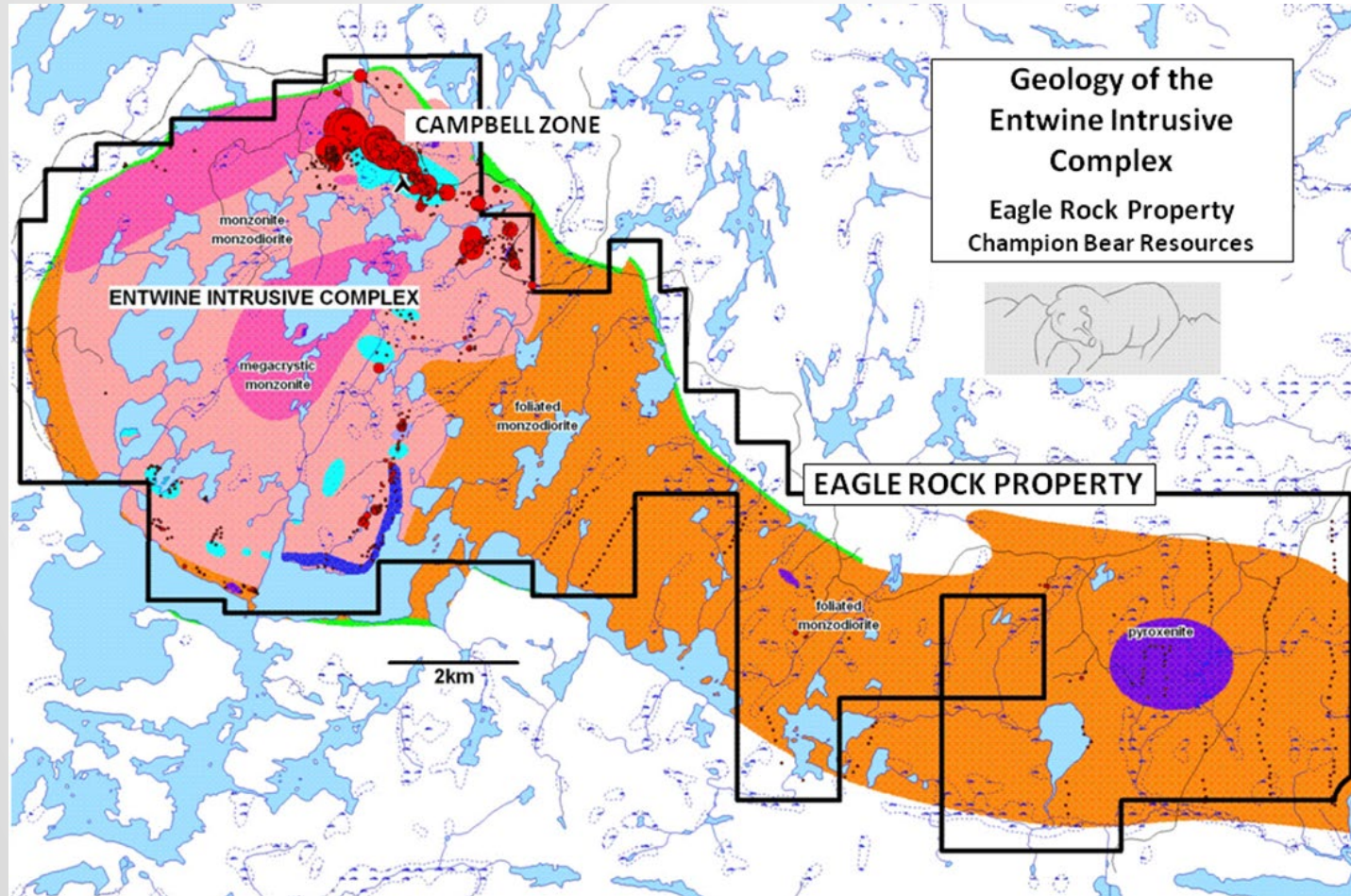


Sheared, altered felsic metavolcanics from Plomp Farm (NQ core) samples

Current estimated dimensions of mineralization

- Height = Surface to 900 meters, open at depth
- Length = 2,200 meters, open on strike East and West
- Width = 15 meter average

EAGLE ROCK OVERVIEW



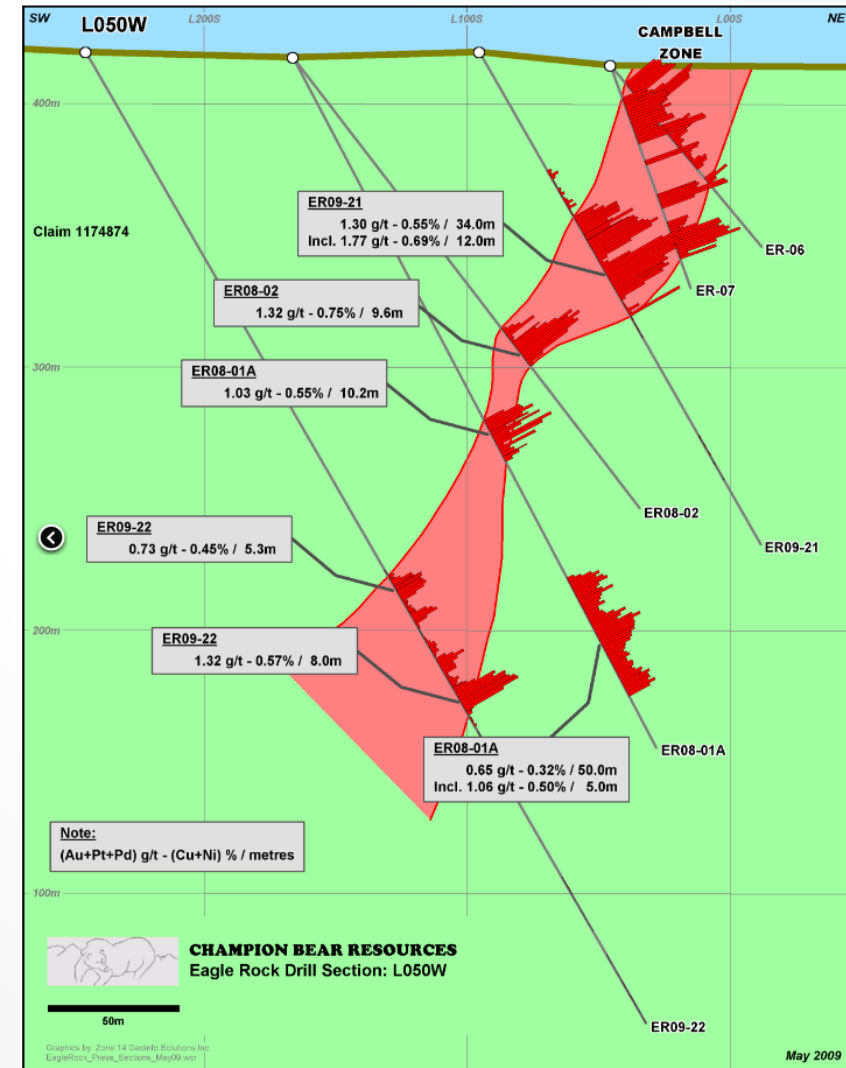
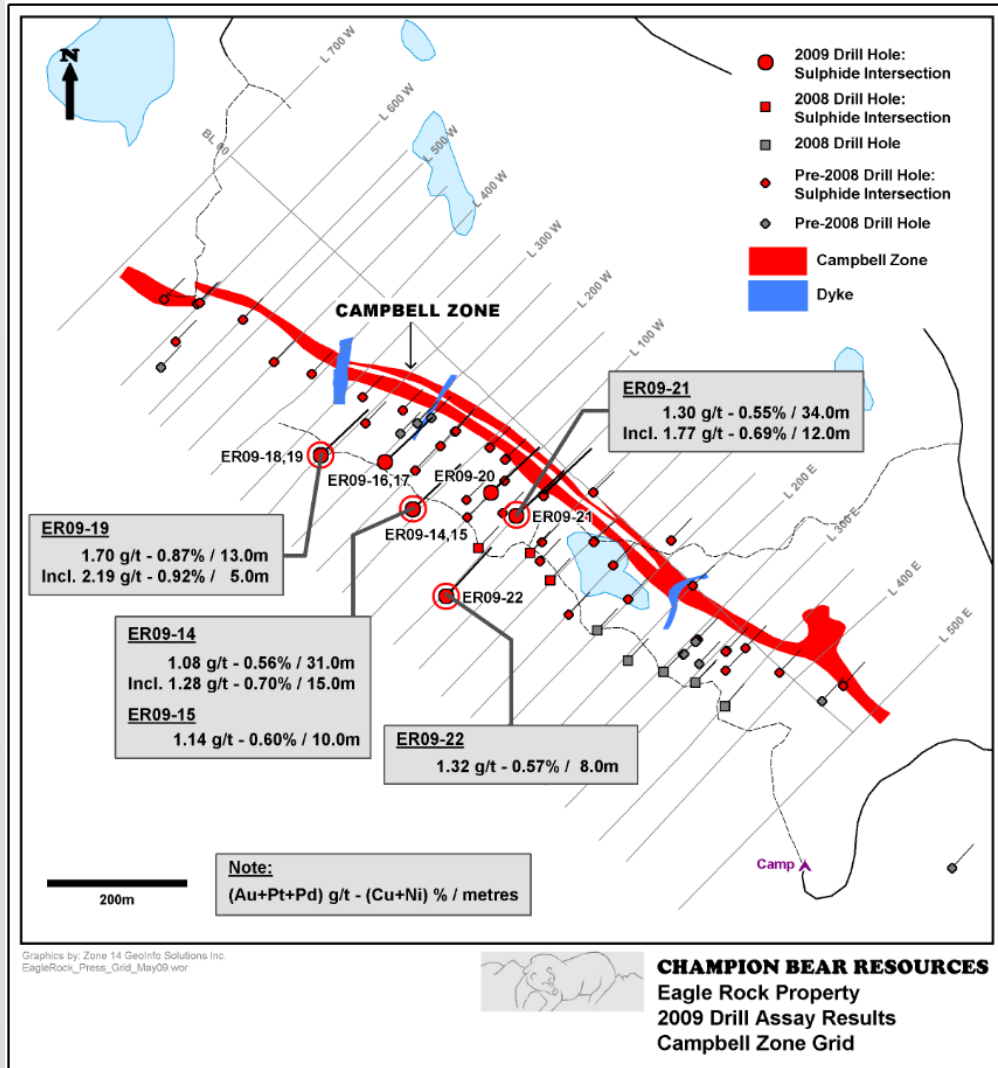
Eagle Rock – Multi-phase sanukitoid intrusive complex host to Cu-Ni-PGE mineralization. **PGE dominated by Palladium up to 1.04 g/t. Drill assays up to 2.19 g/t PGE and 0.92% Cu+Ni over 5 meters** (part of wider interval grading 1.70 g/t TPM+Au and 0.87% Cu+Ni over 13 meters) on potential 12 km trend for Campbell Zone sulfides (published May 5, 2009 "Champion Bear Intersects 2.19 g/t Au+Pt+Pd over 5.0 metres at Eagle Rock; Completes Additional Staking"). **Open at depth and along strike to the SE.**

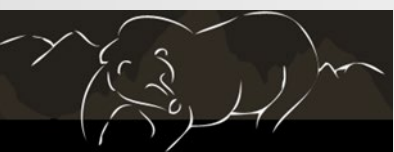
- 33,724 acres of claims at 100% working interest
- 92 drill holes and wedges drilled to date (14,000 m)
- All weather paved highway accessible
- Several surface expressed sulphide deposits with the main Campbell Zone mapped over 7 km to date
- 757 sq.km Hi-Res AeroMag survey flown in 2005
- Todd McCracken P.Geo. (WSP Canada Inc.) Champion Bear's Qualified Person, has reviewed the contents for accuracy and has approved this presentation on behalf of Champion Bear

Go Forward Plans for 2018

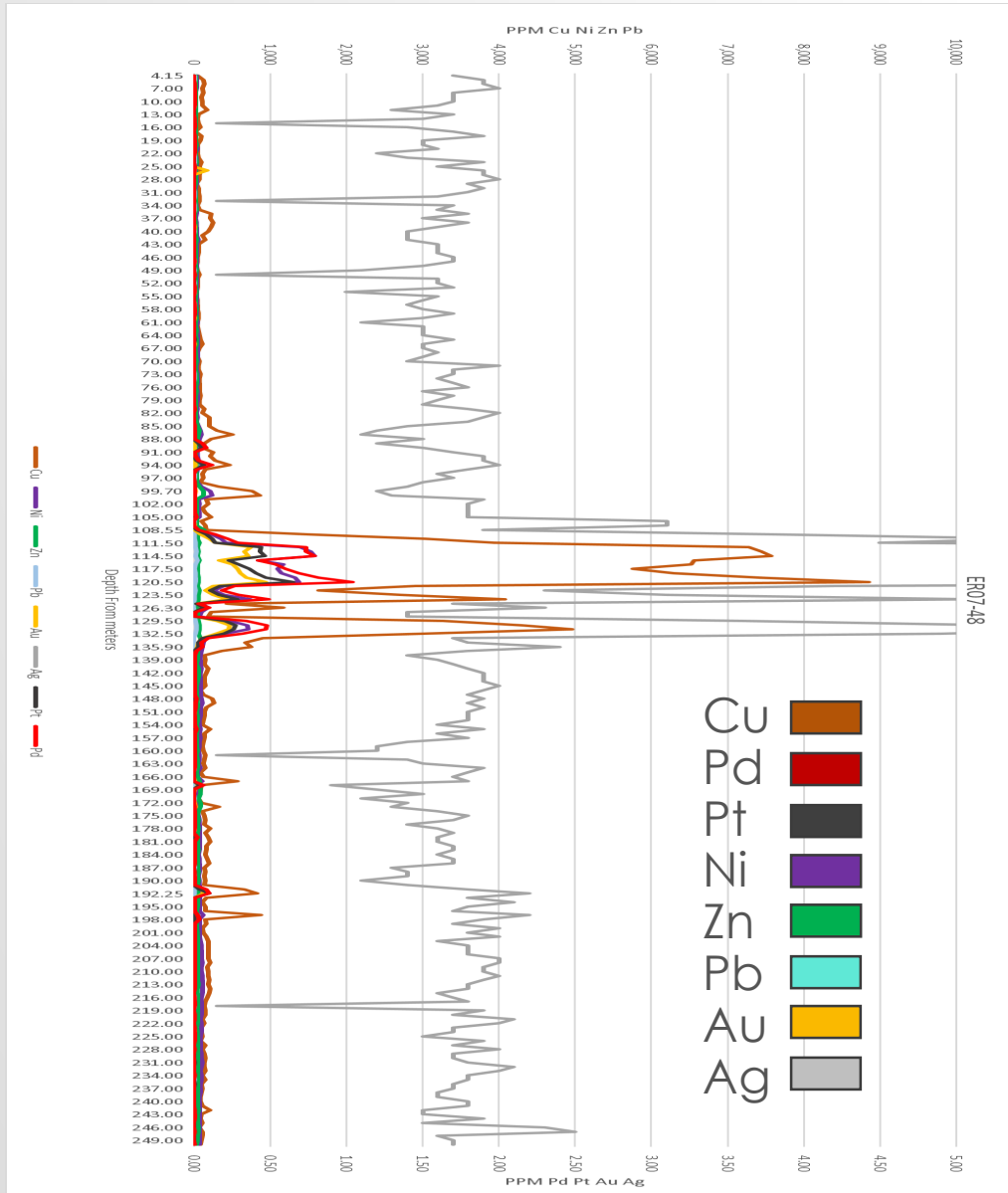
- Drilling up to 2,000 meters
- Conduct an airborne geophysical survey
- Moving towards the Initial Mineral Resource Assessment

EAGLE ROCK MAPPING AND XSECTION





MINERALIZATION SUITE ER07-48 EXAMPLE



ER07-48 Drill Hole 28 meter Averages

Cu>Ni 6:1
Ni>Zn 11:1
Pd>Au 2.2:1
Pd>Pt 1.7:1
Ag>Au 28:1
Co>Zn 1.1:1

Cu 3,831 ppm
Ni 646 ppm
Co 65 ppm
Zn 60 ppm
Pb 18 ppm
Pd 0.38 ppm
Pt 0.22 ppm
Au 0.17 ppm
Ag 4.9 ppm
S% 0.87%



EAGLE ROCK CORE



Gabbro-Gabbronorite unit host to Campbell Zone. Photo of sample 35330 from ER09-19.
2.33 g/t TPM and 0.95% Cu+Ni

Current estimated cost to Pre-Feasibility Study \$10 to \$12MM

- Average drill depth = 250 meters

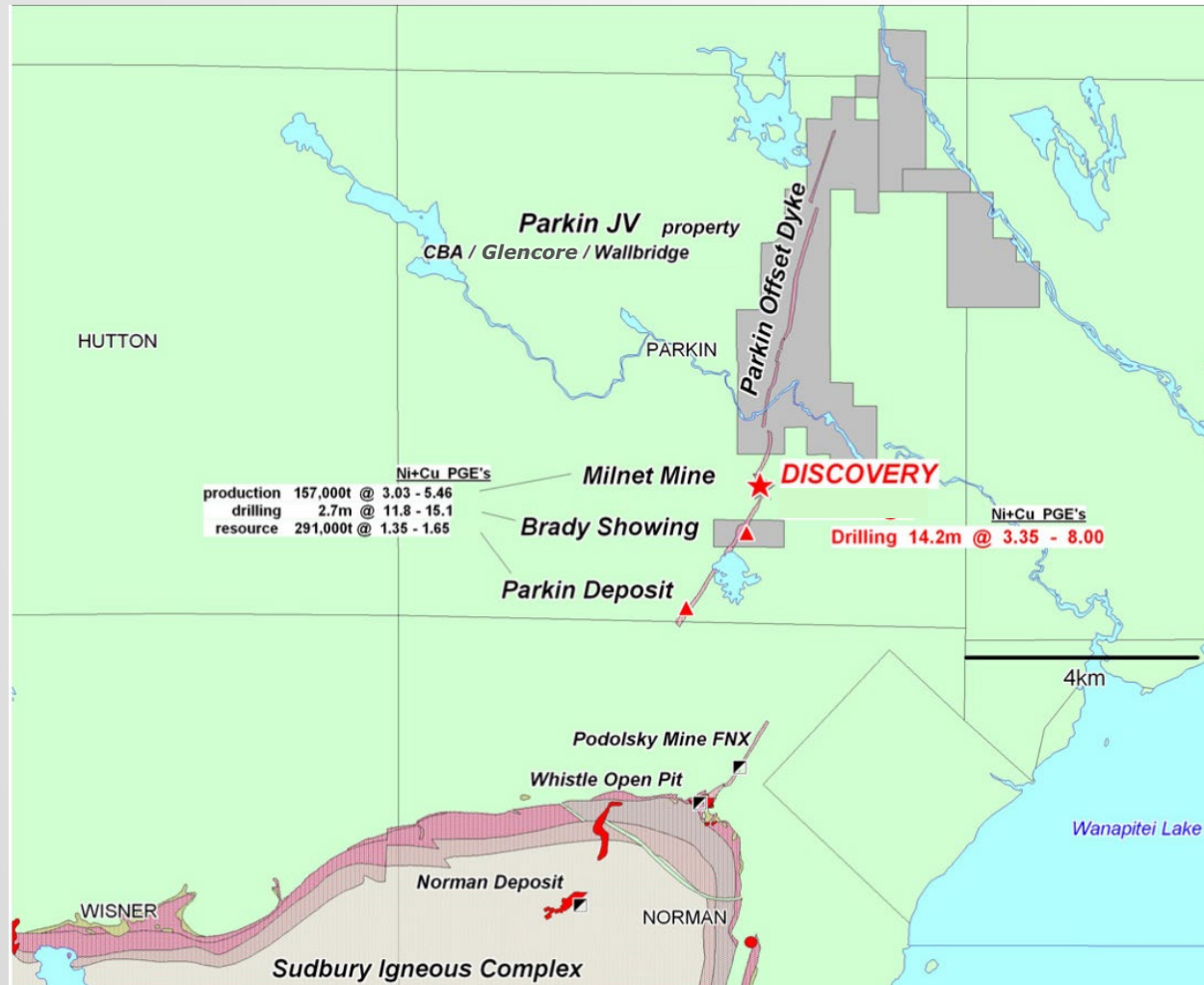


Gabbro-Gabbronorite unit host to Campbell Zone. Photo of sample 35331 from ER09-19.
2.27 g/t TPM and 0.98% Cu+Ni

Current estimated dimensions of Campbell Zone mineralization

- Height = Surface to 300 meters, open at depth
- Length = 7,000 meters, open on strike to the SE
- Width = 30 meters

PARKIN OFFSET DYKE



Parkin Offset Dyke – Metavolcanics adjacent to Parkin Offset dyke as high as **44 g/tonne Au over 1.4 m at 543 meters**, shallow BHUTEM and **deep RIM anomalies** identified in Sudbury Basin Offset dyke, **11.2% Cu, 9.2 g/t Pt, 4.3 g/t Pd and 1.6 g/t Au over 2.7 m** at surface (channel sample of Brady Showing) **Open at depth and along strike.** (previously released information published August 2, 2016 "Champion Bear Updates Activities on the Sudbury Parkin Joint Venture").

Champion Bear owns a 50% Carried Interest in claims, converts to loan payable from production revenue in Parkin Offset Dyke under JV and retain right to become Operator directing all future activity

- 2,018 acres land position at 50% working interest
- 118 holes drilled to date, 1st drilled in 1983
- Road infrastructure in place
- RIM, BHUTEM, EM Surveys
- Todd McCracken P.Geo.(WSP Canada Inc.)Champion Bear's Qualified Person, has reviewed the contents for accuracy and has approved this presentation on behalf of Champion Bear

Expected cost to Pre-Feasibility Study \$11 to \$12MM

- Average drill depth = 800 meters

Current estimated dimensions of mineralization

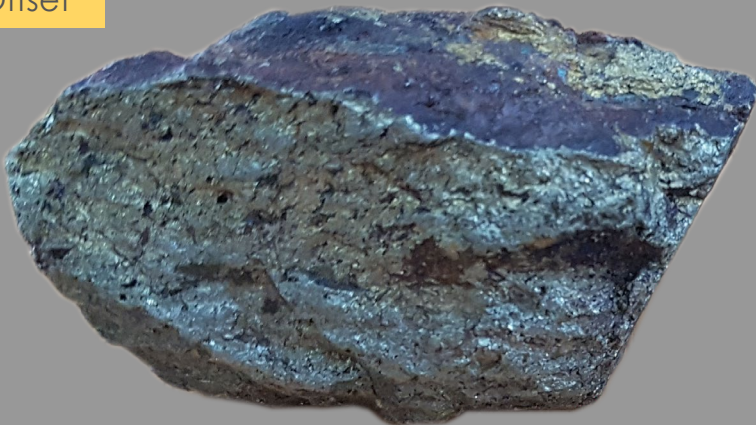
- Height = Surface to 800 meters, open at depth
- Length = 300 meters, open on strike N and S
- Width = 50 meters



PARKIN OFFSET DYKE SAMPLES



Parkin Offset

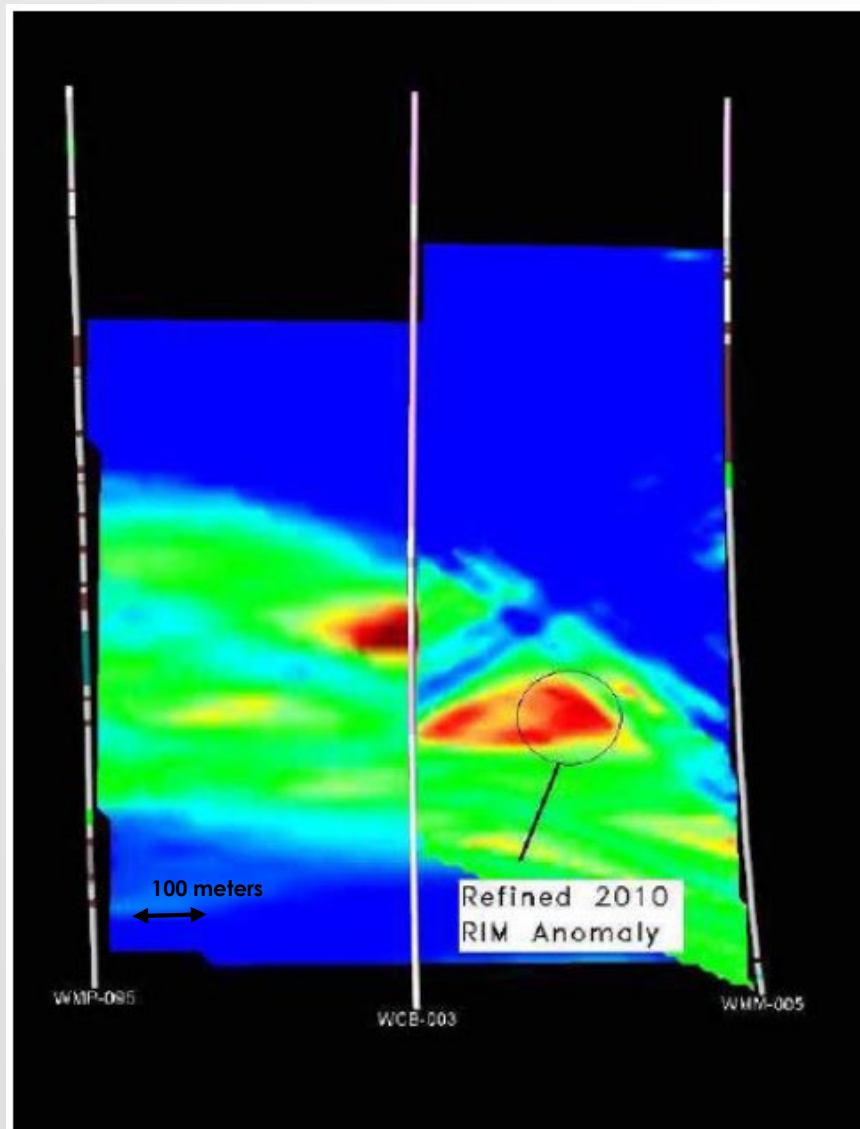


PARKIN TWP. OFFSET
1.3% Ni, 2.0% Cu, 1.0% Co,
0.6 opt Pt, 0.8 opt Au



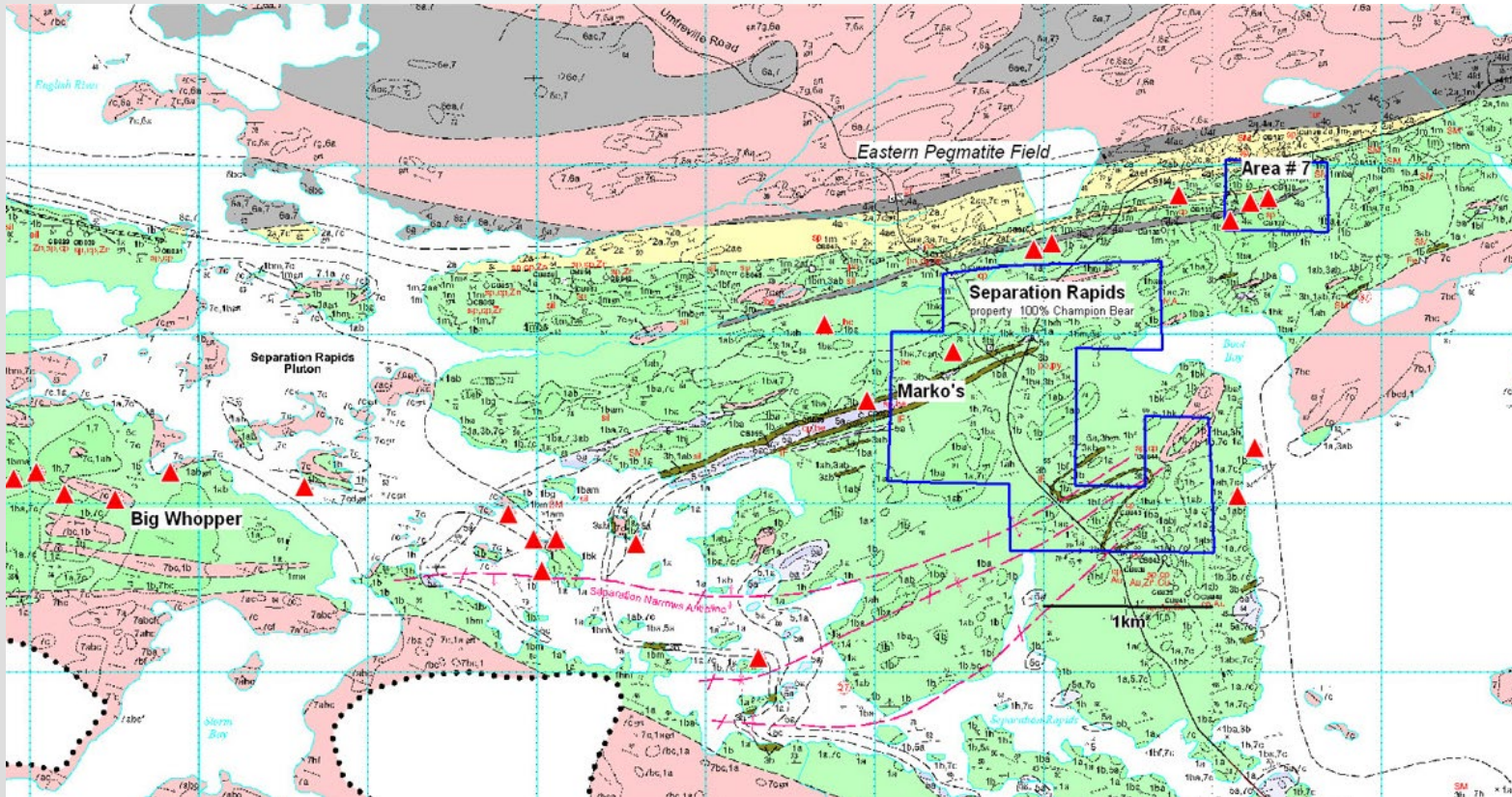


PARKIN UNTESTED RIM ANOMALY



- 2010 Radiowave Imaging (RIM) Survey between boreholes generated well defined RIM anomalies that are not yet tested by the JV operator
(previously released information published August 2, 2016 Champion Bear Updates Activities on the Sudbury Parkin Joint Venture)

SEPARATION RAPIDS



Separation Rapids – Petalite pegmatite Marko's zone directly east of Big Whopper deposit, area surface length measured up to 170 meters. Key area mineralization Ta_2O_5 , Cs_2O , Rb_2O , SnO_2 and Li_2O . **Open at depth and along strike.**

- 672 acre land position at 100% working interest
- 22 holes drilled to date, Marko's 1st drilled by Champion Bear in 1997
- Road infrastructure in place
- Todd McCracken P.Geo.(WSP Canada Inc.)Champion Bear's Qualified Person, has reviewed the contents for accuracy and has approved this presentation on behalf of Champion Bear

Current estimated cost to Pre-Feasibility Study \$3 to \$5MM

- Average drill depth = 300 meters

Current estimated dimensions of mineralization

- Height = Surface to 250 meters, open at depth
- Length = 200 meters, open on strike NE and SW
- Width = 8 meters



PROJECT SUMMARIES



- **Initial Mineral Resource Estimate published Feb 5 2018 - INFERRED 107,100 Oz Gold and 38,400 Oz Silver, 2018 focus to expand resource**
 - **Plomp Farm** – Hybrid VMS Gold Deposit. Folded/strained barite-enriched quartz-sericite-sulfide schist unit averaging 15m thick and sericitized felsic tuffs identified with wide spread, distinct Pathfinder elemental signatures. 2 OGS samples testing **1.72 and 2.98 ounces/t Au (53.5 and 92.7 g/t)**. **2.2 km strike length and mineralization to 900 meters TVD and Open on Strike and Depth.** Plan to drill infill program ~5,000 m along with re-sampling ~35,000 meters of unsplit historical core to update Initial Mineral Resource Estimate in 2018. 100% Interest in claims.
- **Advancing to Initial Mineral Resource Estimate in 2018**
 - **Eagle Rock** – Multi-phase sanukitoid intrusive complex host to Cu-Pd-Ni-Pt-Au-Co-Ag mineralization. **PGE dominated by Palladium up to 1.0 g/t.** Drill assays up to **2.19 g/t PGE+Au and 0.92% Cu+Ni over 5 meters** (part of wider interval grading 1.70 g/t TPM+Au and 0.87% Cu+Ni over 13 meters) on potential 12 km trend for Campbell Zone sulfides. Plan to drill infill program ~2,000 m for Initial Mineral Resource Estimate in 2018 and fly an airborne geophysical program. 100% Interest in claims.
- **Non-Operated 2018 Project**
 - **Parkin Offset Dyke** – Metavolcanics within or adjacent to Parkin Offset dyke as high as **44 g/tonne Au over 1.4 m** at 543 meters, shallow BHUTEM and deep RIM anomalies identified in Sudbury Basin Offset dyke, **11.2% Cu, 9.2 g/t Pt, 4.3 g/t Pd and 1.6 g/t Au over 2.7 m** at surface (channel sample of Brady Showing). Non-operated JV activity throughout 2018 expected. 50% Carried Interest in claims converts to loan payable from production revenue.
- **Currently Unfunded, Operated Project**
 - **Separation Rapids** – Petalite pegmatite zone directly east of Big Whopper deposit, area surface widths measured up to 170 meters. Key area mineralization Ta₂O₅, Cs₂O, Rb₂O, SnO₂ and Li₂O. 100% Interest in claims. May fund 2018 activity based on success of equity raise.
- Target Metals – **Au, Pd, Pt, Cu, Ni, Co, Ag, Ta, Li**
- Over \$20MM spent to date on all properties
- All claims in mining friendly, conflict free jurisdiction of Ontario, Canada with ~200 years of mining history.
- **2018 activity to be funded through equity raise(s)**



CHAMPION BEAR OVERVIEW

Champion Bear is a Canadian mineral exploration and development company focused exclusively on the historically prospective mining regions of Ontario, Canada. The company's primary targets are Gold, Copper, Palladium, Platinum and to a less extent other PGMs, Tantalum and REE. Champion Bear's aim is to create shareholder value through discovery, acquisition and joint ventures. Champion Bear was incorporated in 1987 and is publicly listed on the Toronto Venture Exchange.



CHAMPION BEAR RESOURCES LTD.(TSX.V:CBA)

For further information about Champion Bear please contact:

Richard Kantor, President and CEO

Email: richard.cbear@shaw.ca

Phone: +1.403.229.9522

Todd Dillabough, Director

Email: todd.dillabough@gmail.com

Phone:+1.587.229.5999

Website: www.ChampionBear.com