



CHAMPION BEAR RESOURCES LTD.

Advancing Toward 2 Resource Assessments Au and Cu-PGM

**Pilot Drill Program along with Re-sampling and Re-interpreting ~51,000 meters
of historical core from 128 drill holes at Plomp Farm Au project
(Hemlo-like Quartz-Sericite-Schist mineralization)**

**Additional Drilling of up to 2,000 meters and
Resource Assessment at Eagle Rock Cu-PGM project**

PDAC March 2017

Toronto, Ontario, Canada

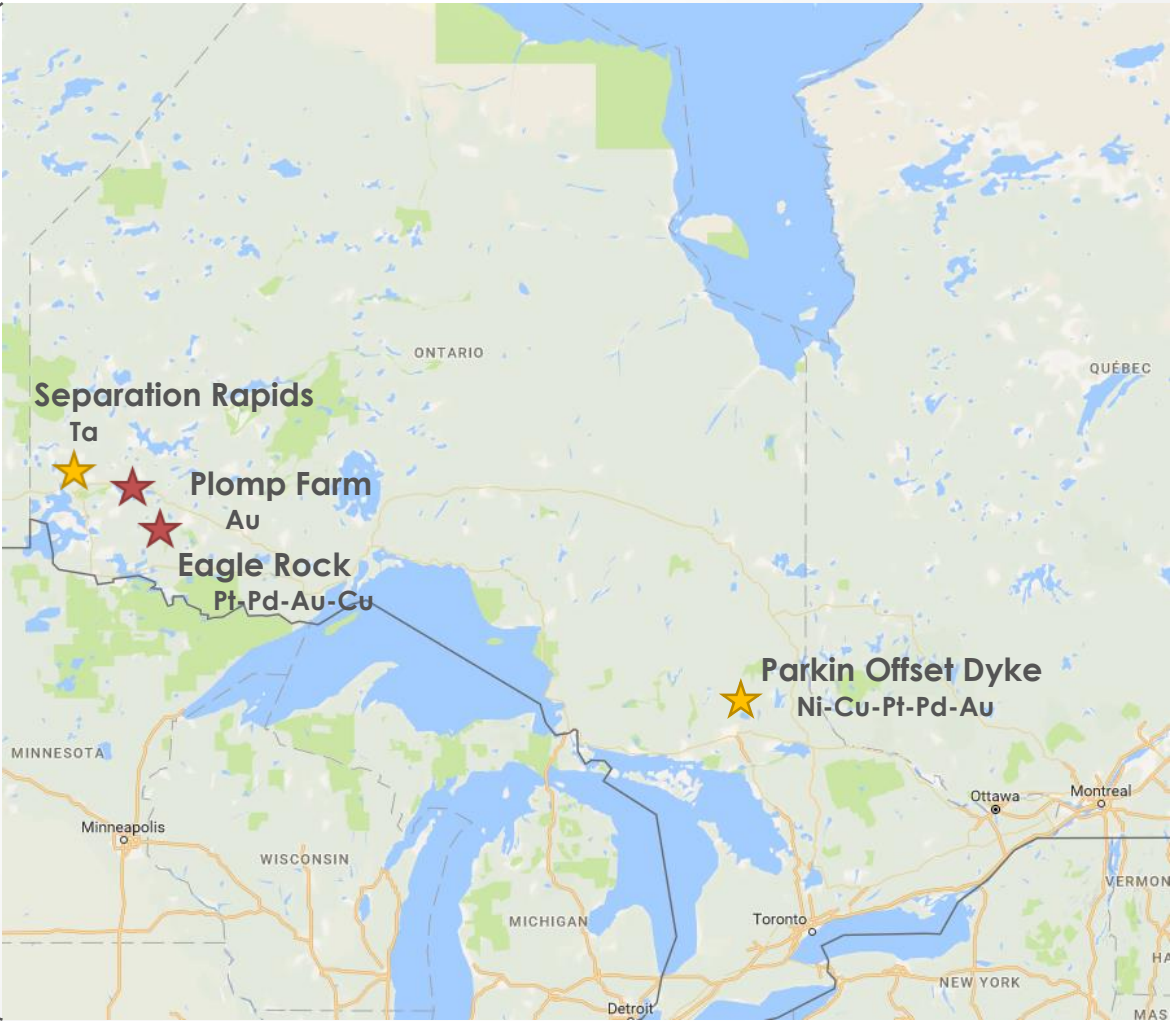
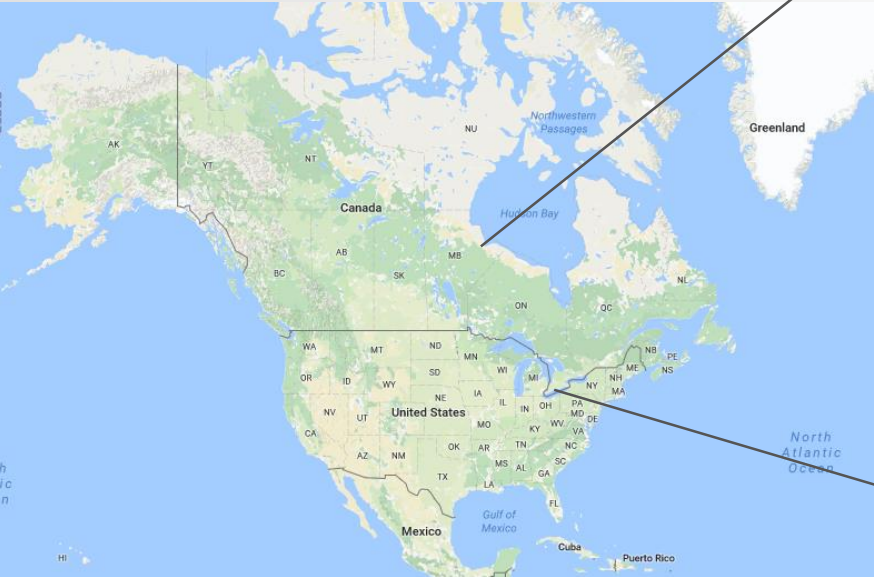
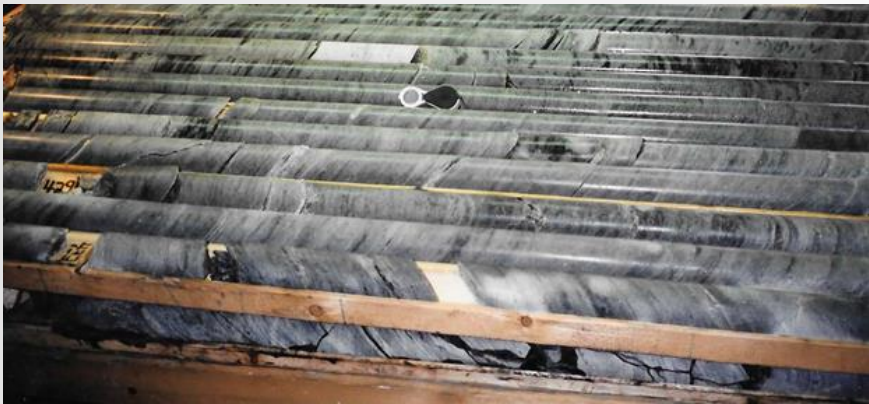


CAUTIONARY STATEMENT ON FORWARD-LOOKING INFORMATION

CERTAIN INFORMATION CONTAINED IN THIS PRESENTATION, INCLUDING ANY INFORMATION AS TO OUR STRATEGY, PROJECTS, PLANS OR FUTURE FINANCIAL OR OPERATING PERFORMANCE, CONSTITUTES "FORWARD-LOOKING STATEMENTS". ALL STATEMENTS, OTHER THAN STATEMENTS OF HISTORICAL FACT, ARE FORWARD-LOOKING STATEMENTS. THE WORDS "BELIEVE", "EXPECT", "ANTICIPATE", "CONTEMPLATE", "TARGET", "PLAN", "OBJECTIVE", "ASPIRATION", "AIM", "INTEND", "PROJECT", "GOAL", "CONTINUE", "BUDGET", "ESTIMATE", "POTENTIAL", "MAY", "WILL", "CAN", "SHOULD", "COULD", "WOULD" AND SIMILAR EXPRESSIONS IDENTIFY FORWARD-LOOKING STATEMENTS. IN PARTICULAR, THIS PRESENTATION CONTAINS FORWARD-LOOKING STATEMENTS INCLUDING, WITHOUT LIMITATION, WITH RESPECT TO: (I) CHAMPION BEAR'S FORWARD-LOOKING PRODUCTION GUIDANCE; (II) ESTIMATES OF FUTURE ALL-IN-SUSTAINING COSTS PER OUNCE; (III) CASH FLOW FORECASTS; (IV) PROJECTED CAPITAL, OPERATING AND EXPLORATION EXPENDITURES; (V) TARGETED DEBT AND COST REDUCTIONS; (VI) MINE LIFE AND PRODUCTION RATES; (VII) POTENTIAL MINERALIZATION AND METAL OR MINERAL RECOVERIES; (VII) TIMING AND COMPLETION OF ACQUISITIONS; (IX) NON-CORE ASSET SALES OR JOINT VENTURES; (X) EXPECTATIONS REGARDING FUTURE PRICE ASSUMPTIONS, FINANCIAL PERFORMANCE AND OTHER OUTLOOK OR GUIDANCE; AND (XI) THE ESTIMATED TIMING AND CONCLUSIONS OF TECHNICAL REPORTS AND OTHER STUDIES. FORWARD-LOOKING STATEMENTS ARE NECESSARILY BASED UPON A NUMBER OF ESTIMATES AND ASSUMPTIONS; INCLUDING MATERIAL ESTIMATES AND ASSUMPTIONS RELATED TO THE FACTORS SET FORTH BELOW THAT, WHILE CONSIDERED REASONABLE BY THE COMPANY AS AT THE DATE OF THIS PRESENTATION IN LIGHT OF MANAGEMENT'S EXPERIENCE AND PERCEPTION OF CURRENT CONDITIONS AND EXPECTED DEVELOPMENTS, ARE INHERENTLY SUBJECT TO SIGNIFICANT BUSINESS, ECONOMIC AND COMPETITIVE UNCERTAINTIES AND CONTINGENCIES. KNOWN AND UNKNOWN FACTORS COULD CAUSE ACTUAL RESULTS TO DIFFER MATERIALLY FROM THOSE PROJECTED IN THE FORWARD-LOOKING STATEMENTS AND UNDUE RELIANCE SHOULD NOT BE PLACED ON SUCH STATEMENTS AND INFORMATION. SUCH FACTORS INCLUDE, BUT ARE NOT LIMITED TO: FLUCTUATIONS IN THE SPOT AND FORWARD PRICE OF GOLD, COPPER OR CERTAIN OTHER COMMODITIES (SUCH AS SILVER, DIESEL FUEL, NATURAL GAS AND ELECTRICITY); THE SPECULATIVE NATURE OF MINERAL EXPLORATION AND DEVELOPMENT; CHANGES IN MINERAL PRODUCTION PERFORMANCE, EXPLOITATION AND EXPLORATION SUCCESSES; RISKS ASSOCIATED WITH THE STUDIES STILL IN THE EARLY STAGES OF EVALUATION AND ADDITIONAL ENGINEERING AND OTHER ANALYSIS IS REQUIRED TO FULLY ASSESS THEIR IMPACT; DIMINISHING QUANTITIES OR GRADES OF RESERVES; INCREASED COSTS, DELAYS, SUSPENSIONS AND TECHNICAL CHALLENGES ASSOCIATED WITH THE CONSTRUCTION OF CAPITAL PROJECTS; OPERATING OR TECHNICAL DIFFICULTIES IN CONNECTION WITH MINING OR DEVELOPMENT ACTIVITIES, INCLUDING GEOTECHNICAL CHALLENGES AND DISRUPTIONS IN THE MAINTENANCE OR PROVISION OF REQUIRED INFRASTRUCTURE AND INFORMATION TECHNOLOGY SYSTEMS; FAILURE TO COMPLY WITH ENVIRONMENTAL AND HEALTH AND SAFETY LAWS AND REGULATIONS; TIMING OF RECEIPT OF, OR FAILURE TO COMPLY WITH, NECESSARY PERMITS AND APPROVALS; UNCERTAINTY WHETHER SOME OR ALL OF THE STUDIES AND INVESTMENTS TARGETED BY CHAMPION BEAR WILL MEET THE COMPANY'S CAPITAL ALLOCATION OBJECTIVES; THE IMPACT OF GLOBAL LIQUIDITY AND CREDIT AVAILABILITY ON THE TIMING OF CASH FLOWS AND THE VALUES OF ASSETS AND LIABILITIES BASED ON PROJECTED FUTURE CASH FLOWS; ADVERSE CHANGES IN OUR CREDIT RATINGS; THE IMPACT OF INFLATION; FLUCTUATIONS IN THE CURRENCY MARKETS; CHANGES IN INTEREST RATES; RISKS ARISING FROM HOLDING DERIVATIVE INSTRUMENTS; CHANGES IN NATIONAL AND LOCAL GOVERNMENT LEGISLATION, TAXATION, CONTROLS OR REGULATIONS AND/OR CHANGES IN THE ADMINISTRATION OF LAWS, POLICIES AND PRACTICES, EXPROPRIATION OR NATIONALIZATION OF PROPERTY AND POLITICAL OR ECONOMIC DEVELOPMENTS IN CANADA WHICH THE COMPANY DOES CARRY ON BUSINESS IN THE FUTURE; LACK OF CERTAINTY WITH RESPECT TO DOMESTIC LEGAL SYSTEMS, CORRUPTION AND OTHER FACTORS THAT ARE INCONSISTENT WITH THE RULE OF LAW; DAMAGE TO THE COMPANY'S REPUTATION DUE TO THE ACTUAL OR PERCEIVED OCCURRENCE OF ANY NUMBER OF EVENTS, INCLUDING NEGATIVE PUBLICITY WITH RESPECT TO THE COMPANY'S HANDLING OF ENVIRONMENTAL MATTERS OR DEALINGS WITH COMMUNITY GROUPS, WHETHER TRUE OR NOT; RISK OF LOSS DUE TO ACTS OF WAR, TERRORISM, SABOTAGE AND CIVIL DISTURBANCES; LITIGATION; CONTESTS OVER TITLE TO PROPERTIES, PARTICULARLY TITLE TO UNDEVELOPED PROPERTIES, OR OVER ACCESS TO WATER, POWER AND OTHER REQUIRED INFRASTRUCTURE; BUSINESS OPPORTUNITIES THAT MAY BE PRESENTED TO, OR PURSUED BY, THE COMPANY; OUR ABILITY TO SUCCESSFULLY INTEGRATE ACQUISITIONS OR COMPLETE DIVESTITURES; RISKS ASSOCIATED WITH WORKING WITH PARTNERS IN JOINTLY CONTROLLED ASSETS; EMPLOYEE RELATIONS INCLUDING LOSS OF KEY EMPLOYEES; INCREASED COSTS AND PHYSICAL RISKS, INCLUDING EXTREME WEATHER EVENTS AND RESOURCE SHORTAGES, RELATED TO CLIMATE CHANGE; AVAILABILITY AND INCREASED COSTS ASSOCIATED WITH MINING INPUTS AND LABOR. IN ADDITION, THERE ARE RISKS AND HAZARDS ASSOCIATED WITH THE BUSINESS OF MINERAL EXPLORATION, DEVELOPMENT AND MINING, INCLUDING ENVIRONMENTAL HAZARDS, INDUSTRIAL ACCIDENTS, UNUSUAL OR UNEXPECTED FORMATIONS, PRESSURES, CAVE-INS, FLOODING AND GOLD BULLION, COPPER CATHODE OR GOLD OR COPPER OR PGM OR RARE EARTH CONCENTRATE LOSSES (AND THE RISK OF INADEQUATE INSURANCE, OR INABILITY TO OBTAIN INSURANCE, TO COVER THESE RISKS). MANY OF THESE UNCERTAINTIES AND CONTINGENCIES CAN AFFECT OUR ACTUAL RESULTS AND COULD CAUSE ACTUAL RESULTS TO DIFFER MATERIALLY FROM THOSE EXPRESSED OR IMPLIED IN ANY FORWARD-LOOKING STATEMENTS MADE BY, OR ON BEHALF OF, US. READERS ARE CAUTIONED THAT FORWARD-LOOKING STATEMENTS ARE NOT GUARANTEES OF FUTURE PERFORMANCE. ALL OF THE FORWARD-LOOKING STATEMENTS MADE IN THIS PRESENTATION ARE QUALIFIED BY THESE CAUTIONARY STATEMENTS. SPECIFIC REFERENCE IS MADE TO THE MOST RECENT MD&A FORM AND AUDITED YEAR END FINANCIAL STATEMENTS ON FILE WITH THE CANADIAN PROVINCIAL SECURITIES REGULATORY AUTHORITIES FOR A MORE DETAILED DISCUSSION OF SOME OF THE FACTORS UNDERLYING FORWARD-LOOKING STATEMENTS AND THE RISKS THAT MAY AFFECT CHAMPION BEAR'S ABILITY TO ACHIEVE THE EXPECTATIONS SET FORTH IN THE FORWARD-LOOKING STATEMENTS CONTAINED IN THIS PRESENTATION. THE COMPANY DISCLAIMS ANY INTENTION OR OBLIGATION TO UPDATE OR REVISE ANY FORWARD-LOOKING STATEMENTS WHETHER AS A RESULT OF NEW INFORMATION, FUTURE EVENTS OR OTHERWISE, EXCEPT AS REQUIRED BY APPLICABLE LAW.



CHAMPION BEAR'S PROJECTS





PROJECT SUMMARIES



- **Funded, Operated 2017 Projects currently underway**

- **Plomp Farm** – Hemlo-like folded and sheared barite-enriched quartz-sericite-sulfide schist unit averaging 15m thick with consistent mineralization. 2 OGS duplicate samples assayed **1.72 and 2.98 ounces/t Au** representing a potentially previously unrecognized style of mineralization. Pilot drill program along with re-sampling and re-interpreting 51,000 meters of historical core is underway with the goal to generate the Project's first Resource Assessment in 2017. 100% Interest in claims.
- **Eagle Rock** – Multi-phase sanukitoid intrusive complex host to Cu-Ni-PGE mineralization. Drill assays up to to **2.19 g/t PGE+Au and 0.92% Cu+Ni over 5 meters** (part of wider interval grading 1.70 g/t TPM+Au and 0.87% Cu+Ni over 13 meters) on potential 12 km trend for Campbell Zone sulfides. Planned drilling of up to 2,000 meters followed by Resource Assessment in 2017. 100% Interest in claims.

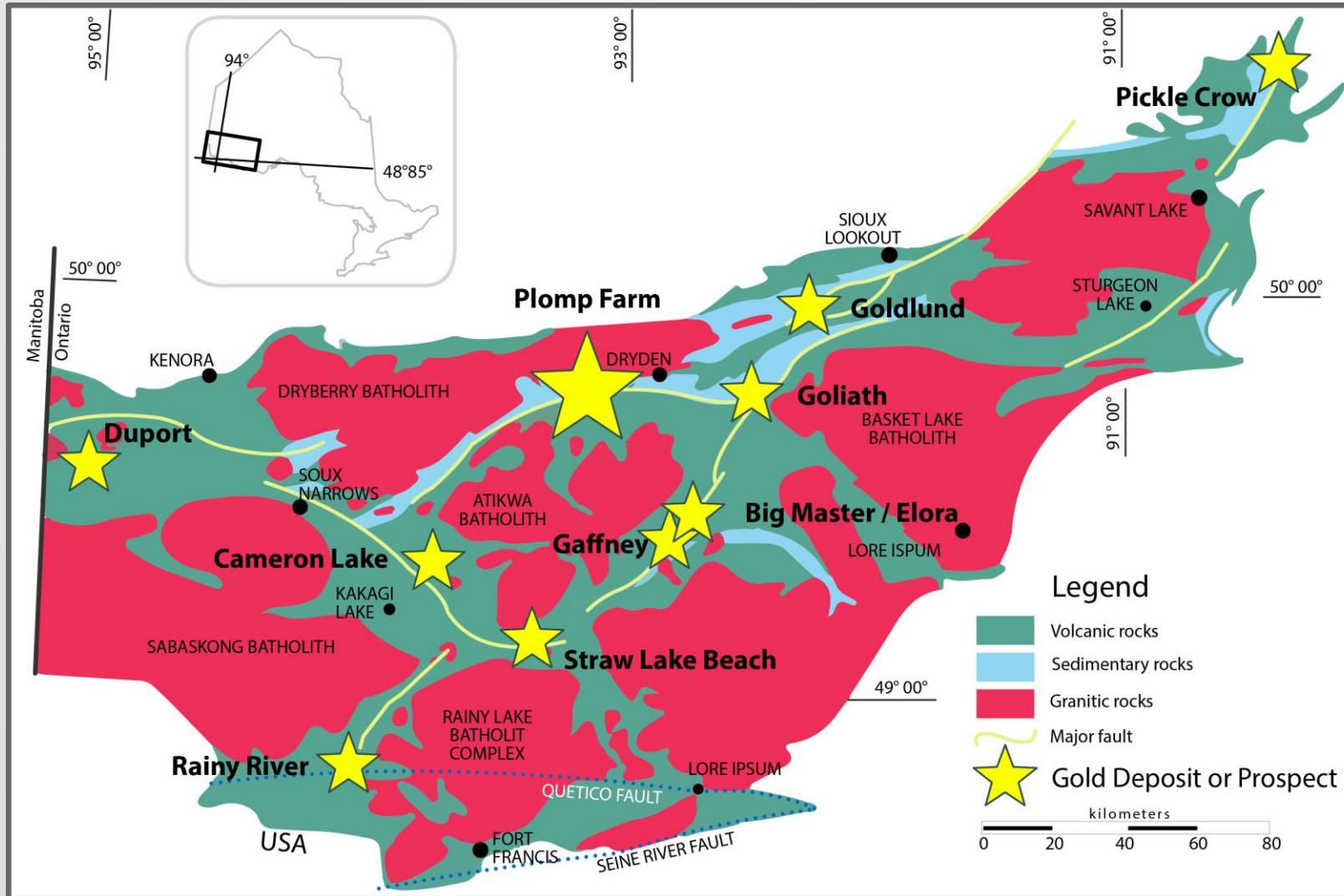
- **Funded, Non-Operated 2017 Project**

- **Parkin Offset Dyke** – Metavolcanics within or adjacent to Parkin Offset dyke as high as **44 g/tonne Au over 1.4 m** at 543 meters, shallow BHUTEM and deep RIM anomalies identified in Sudbury Basin Offset dyke, **11.2% Cu, 9.2 g/t Pt, 4.3 g/t Pd and 1.6 g/t Au over 2.7 m** at surface (channel sample of Brady Showing). Non-operated JV activity throughout 2017. 50% Carried Interest in claims converts to loan payable from production revenue.

- **Currently Unfunded, Operated Project**

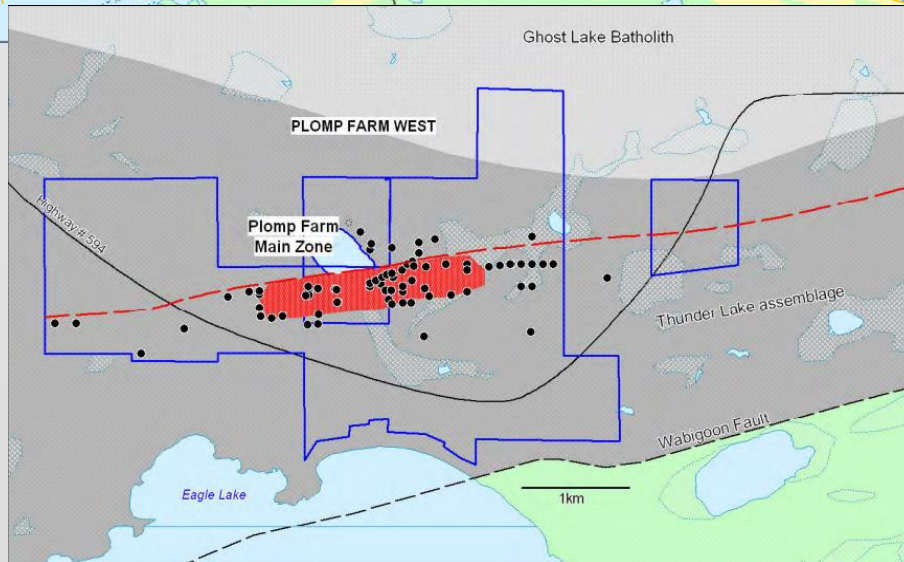
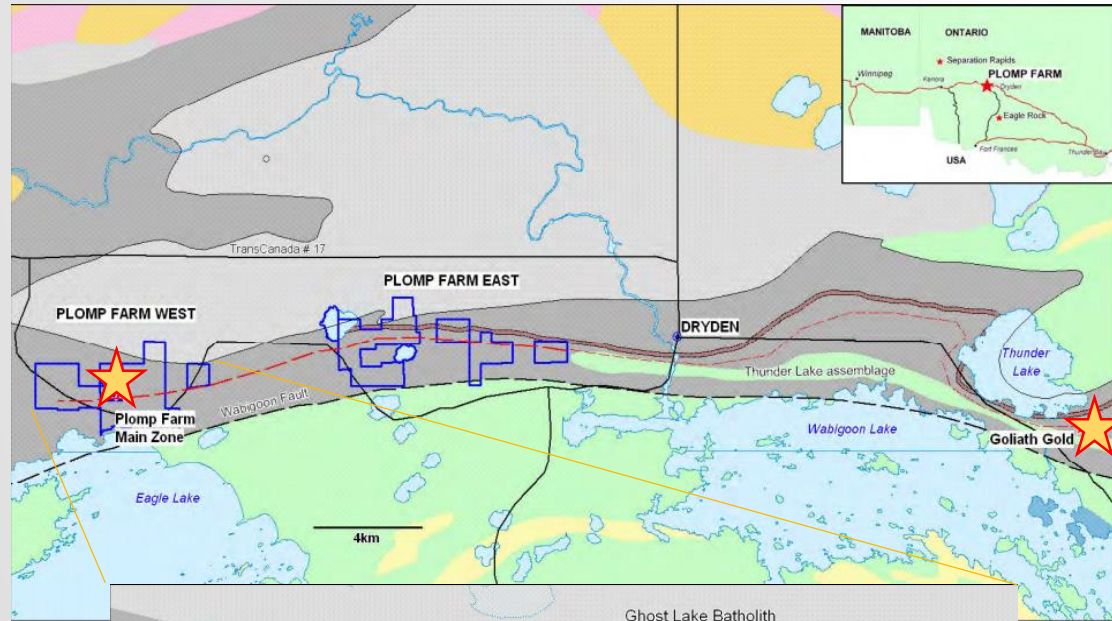
- **Separation Rapids** – Petalite pegmatite zone directly east of Big Whopper deposit, area surface widths measured up to 170 meters and drilling results up to **1% Ta₂O₅, 0.097% Cs₂O, 0.77% Rb₂O, 1.26% SnO₂ and 0.43% Li₂O - Highest recorded Tantalum sample in Ontario (Ontario Geological Survey 2000)**. 100% Interest in claims.
- Target Metals – **Au, Pt, Pd, Cu, Ni, Ag, Ta**
- Over \$20MM spent to date on all properties, advancing toward Resource Assessments on Plomp Farm and Eagle Rock
- All claims in mining friendly, conflict free jurisdiction of Ontario, Canada with ~200 years of mining history.
- 2017 activity funded by December 2016 equity raise

PLOMP FARM REGIONAL MAP



- ~51,000 meters of historical drilling from 128 drill holes and wedges (1995-2005)
- **Currently re-sampling and re-interpreting, pilot drill program Q2, 2017**
- “Hemlo-like” folded and strained quartz sericite schist
- Displays similar characteristics to Rainy River and Goliath deposits

PLOMP FARM OVERVIEW



PDAC TORONTO 2017

Plomp Farm – Folded and sheared barite-enriched quartz-sericite-sulfide schist unit averaging 15m thick with consistent mineralization. 2 OGS duplicate samples assayed **1.72 and 2.98 ounces/t Au** representing a potentially previously unrecognized style of mineralization. Mineralization open at depth and along strike.

- 4,458 acre land position at 100% working interest
- 128 drill holes and wedges drilled to date (51,000 m of core), 1st drilled by INCO in 1970
- All weather paved highway passes through the project, rail and natural gas services less than 3 km north
- The Warclub Group, Thunder Lake assemblage of felsic metavolcanic and metasedimentary rocks host both the Plomp Farm Main Zone and **Treasury Metal's Goliath Gold deposit – (1.7Mn Oz @ 2.8g/t)** – with both occurring at similar stratigraphic levels within the assemblage
- Similar geological features to New Gold's Rainy River gold project and Treasury Metals' Goliath gold project



March 2017



PLOMP FARM CORE



Sheared, altered felsic metavolcanic with andalusite porphyroblasts from Plomp Farm (NQ core)

Current estimated cost to Pre-Feasibility Study \$15 to \$16MM

- Average drill depth = 500 meters
- Local Project Manager – S. Siemieniuk, P.Geo(Superior Exploration Ltd.)



Sheared, altered felsic metavolcanic from Plomp Farm (NQ core)

Current estimated dimensions of mineralization

- Height = Surface to 700 meters, open at depth
- Length = 2,000 meters, open on strike East and West
- Width = 15 meter average



PLOMP FARM



QUARTZ SERICITE SCHIST





PLOMP FARM / HEMLO LONGITUDINAL SECTIONS



Barrick 2016 – Recent Exploration Success
30+ Years in Production, >22 MMoz Produced

Champion Bear
Limited Drilling, Mineralization Open

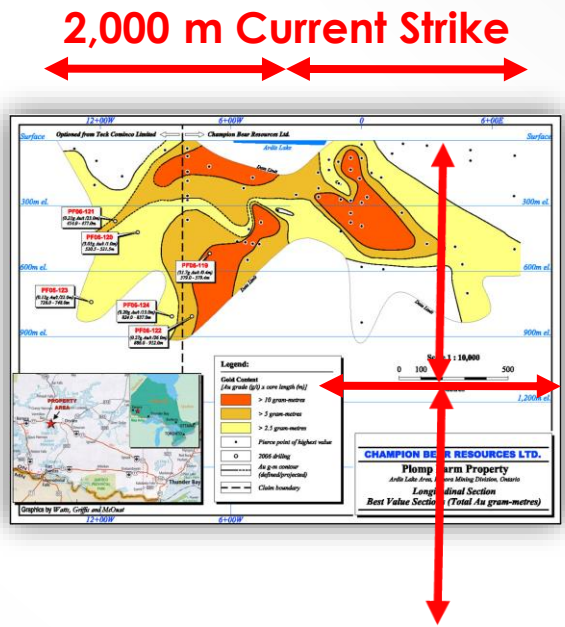
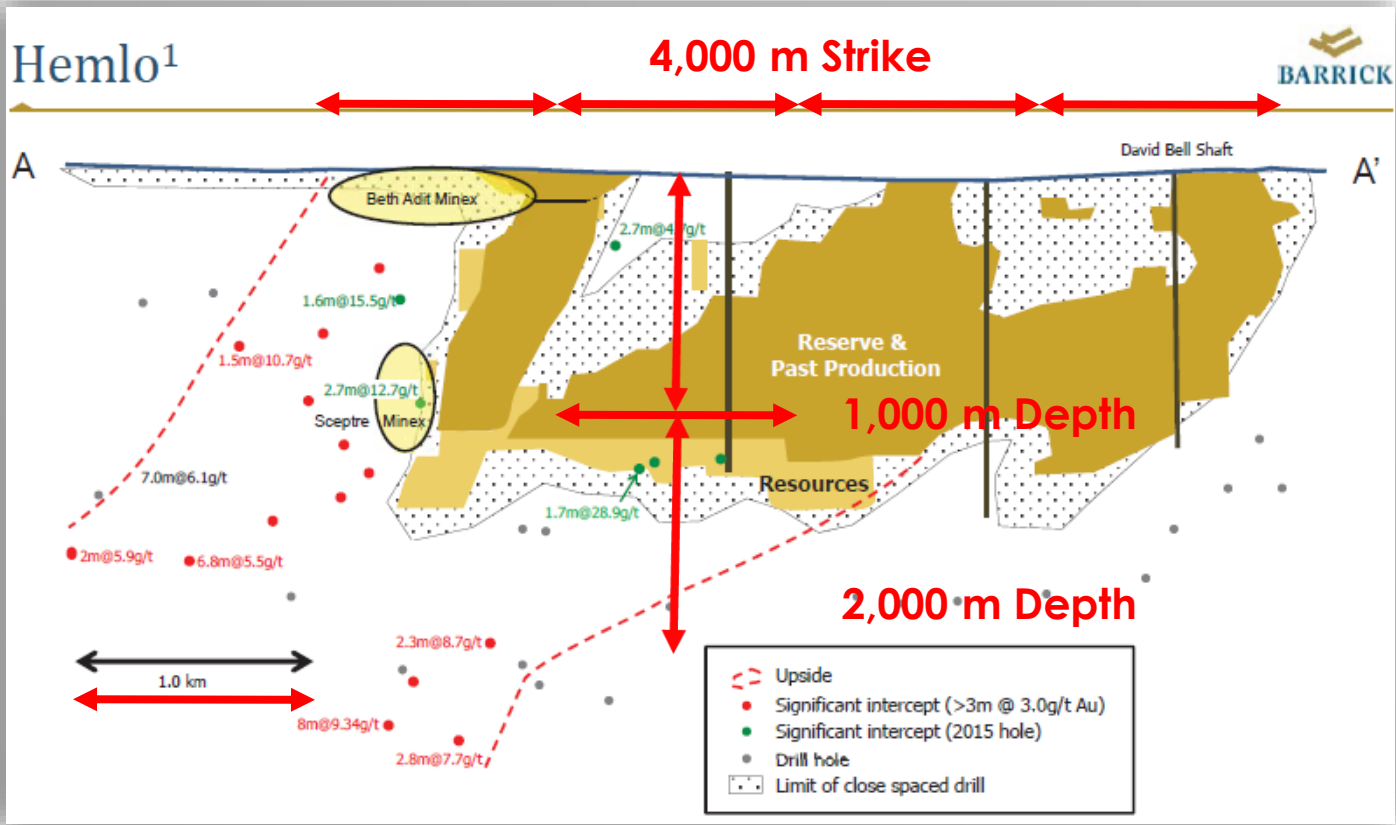
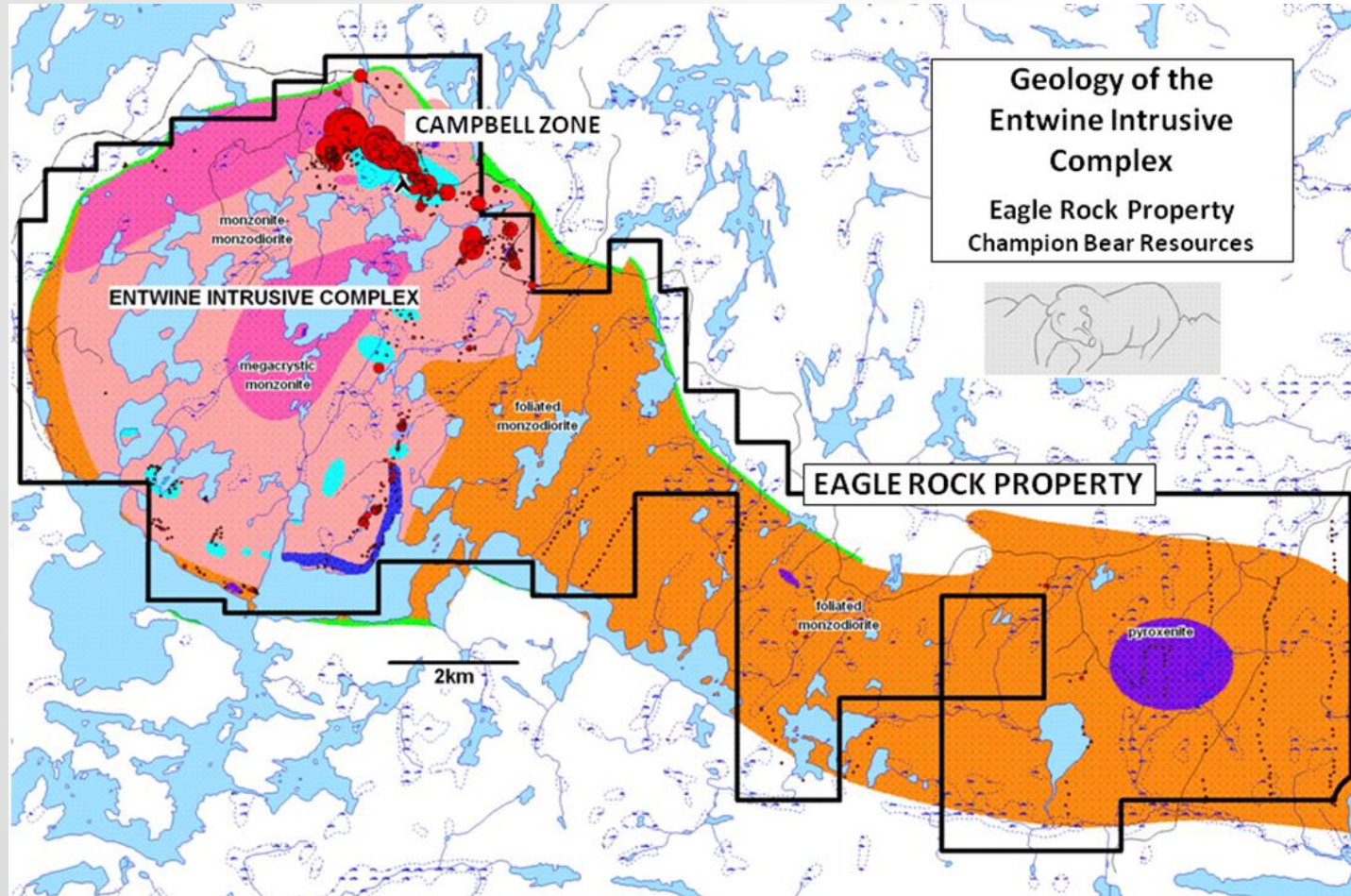


Image source: Barrick Gold Corporation, investor's day presentation, February 22, 2016

EAGLE ROCK OVERVIEW



Eagle Rock – Multi-phase sanukitoid intrusive complex host to Cu-Ni-PGE mineralization. Drill assays up to to **2.19 g/t PGE+Au and 0.92% Cu+Ni over 5 meters** (part of wider interval grading 1.70 g/t TPM+Au and 0.87% Cu+Ni over 13 meters) on potential 12 km trend for Campbell Zone sulfides. Open at depth and along strike to the SE.

- 33,724 acre claim package at 100% working interest
- 92 drill holes and wedges drilled to date (14,000 m)
- All weather paved highway accessible with high voltage power line 50 km north
- Several surface expressed sulphide occurrences with the main Campbell Zone mapped over 7 km to date
- 757 sq.km Hi-Res AeroMag survey flown in 2005
- Drilling up to 2,000 meters planned to start Q2, 2017



EAGLE ROCK CORE



Gabbro-Gabbronorite unit host to Campbell Zone. Photo of sample 35330 from ER09-19. 2.33 g/t TPM and 0.95% Cu+Ni



Gabbro-Gabbronorite unit host to Campbell Zone. Photo of sample 35331 from ER09-19. 2.27 g/t TPM and 0.98% Cu+Ni

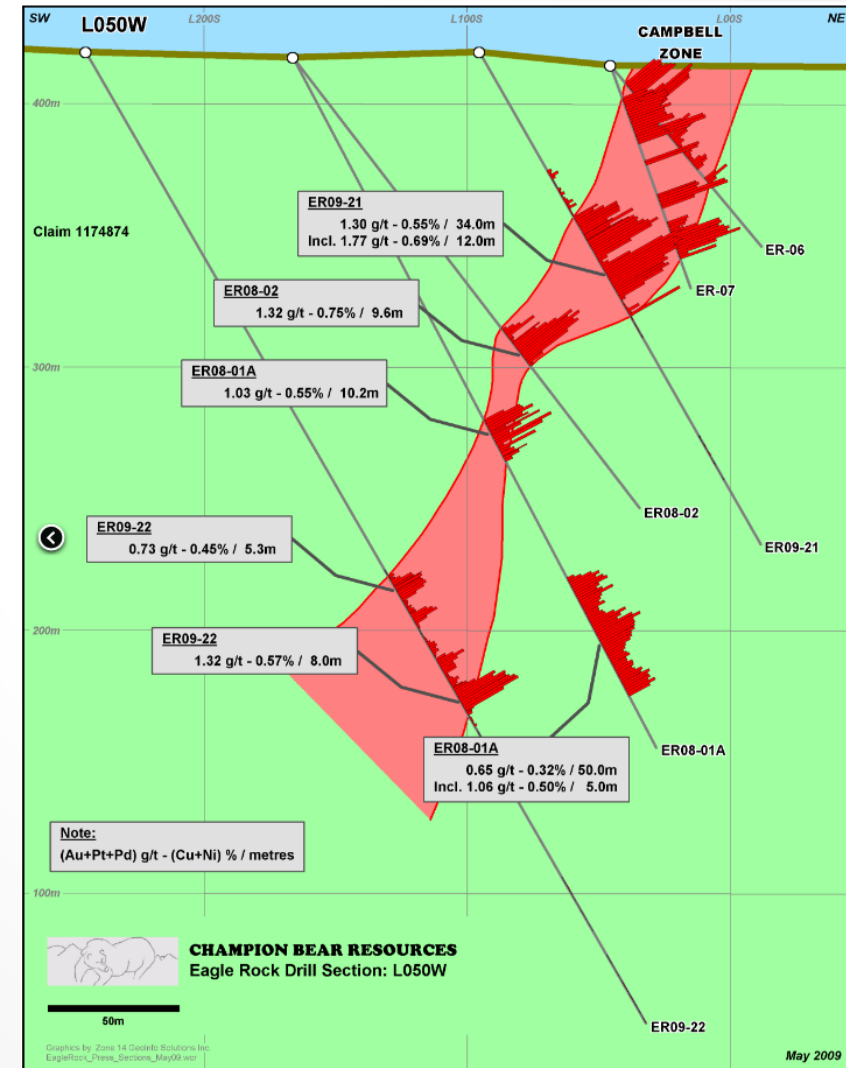
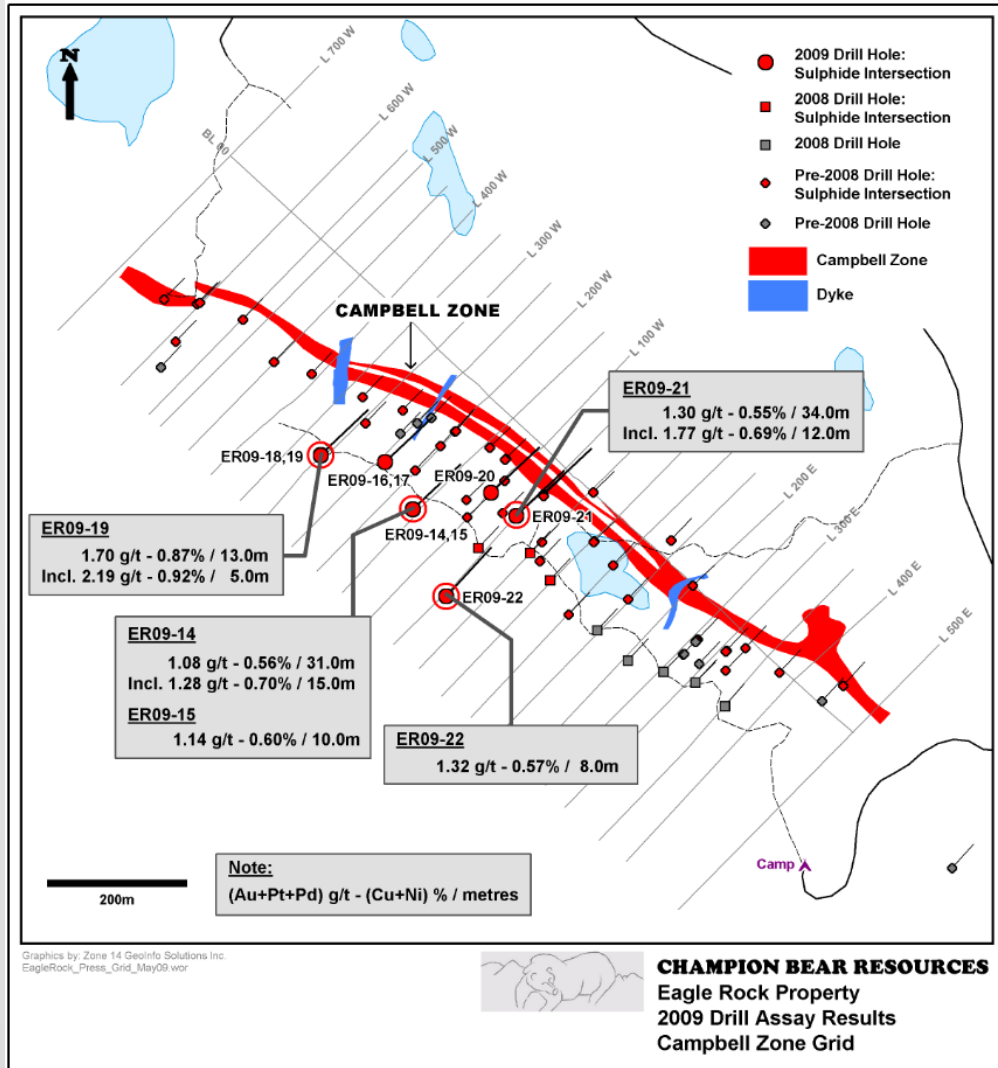
Current estimated cost to Pre-Feasibility Study \$24 to \$25MM

- Average drill depth = 250 meters
- Internal Estimates > 200 million lbs Cu-Pt-Pd Campbell Zone only
- Local Project Manager – S. Siemieniuk, P.Geo (Superior Exploration Ltd.)

Current estimated dimensions of Campbell Zone mineralization

- Height = Surface to 300 meters, open at depth
- Length = 7,000 meters, open on strike to the SE
- Width = 30 meters

EAGLE ROCK MAPPING AND X-SECTION

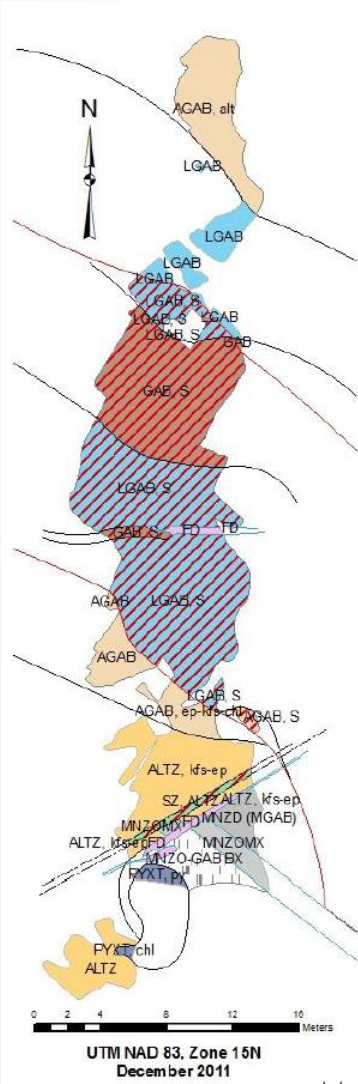




EAGLE ROCK TRENCHING

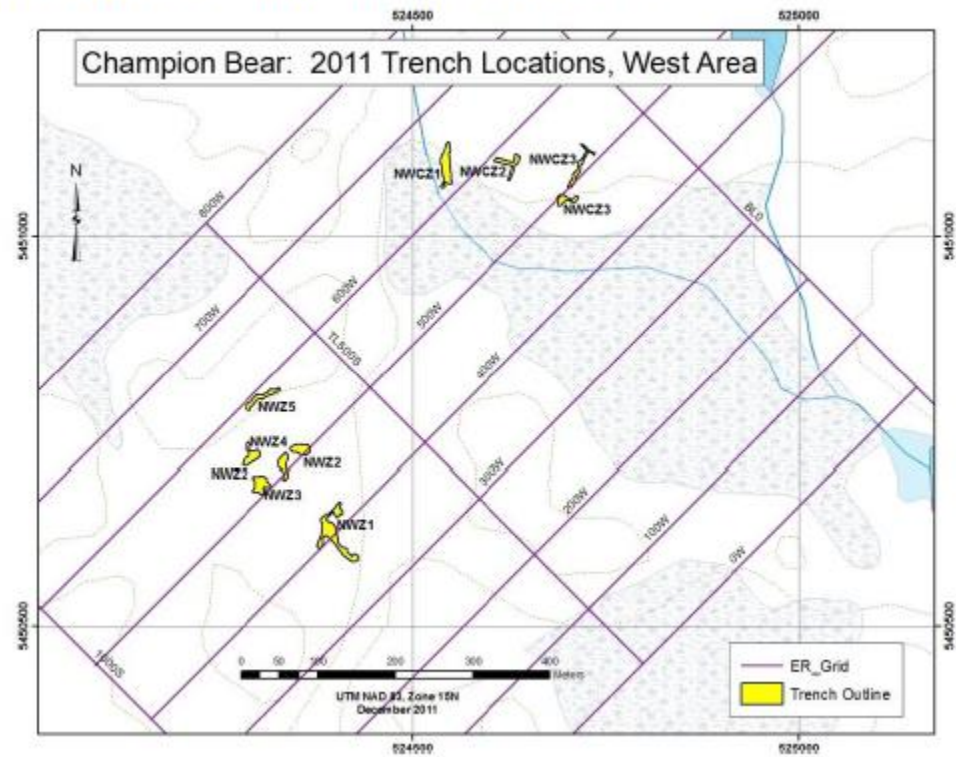


Trench 1 at the NWCZ looking north midway



Map of Trench 1, NWCZ

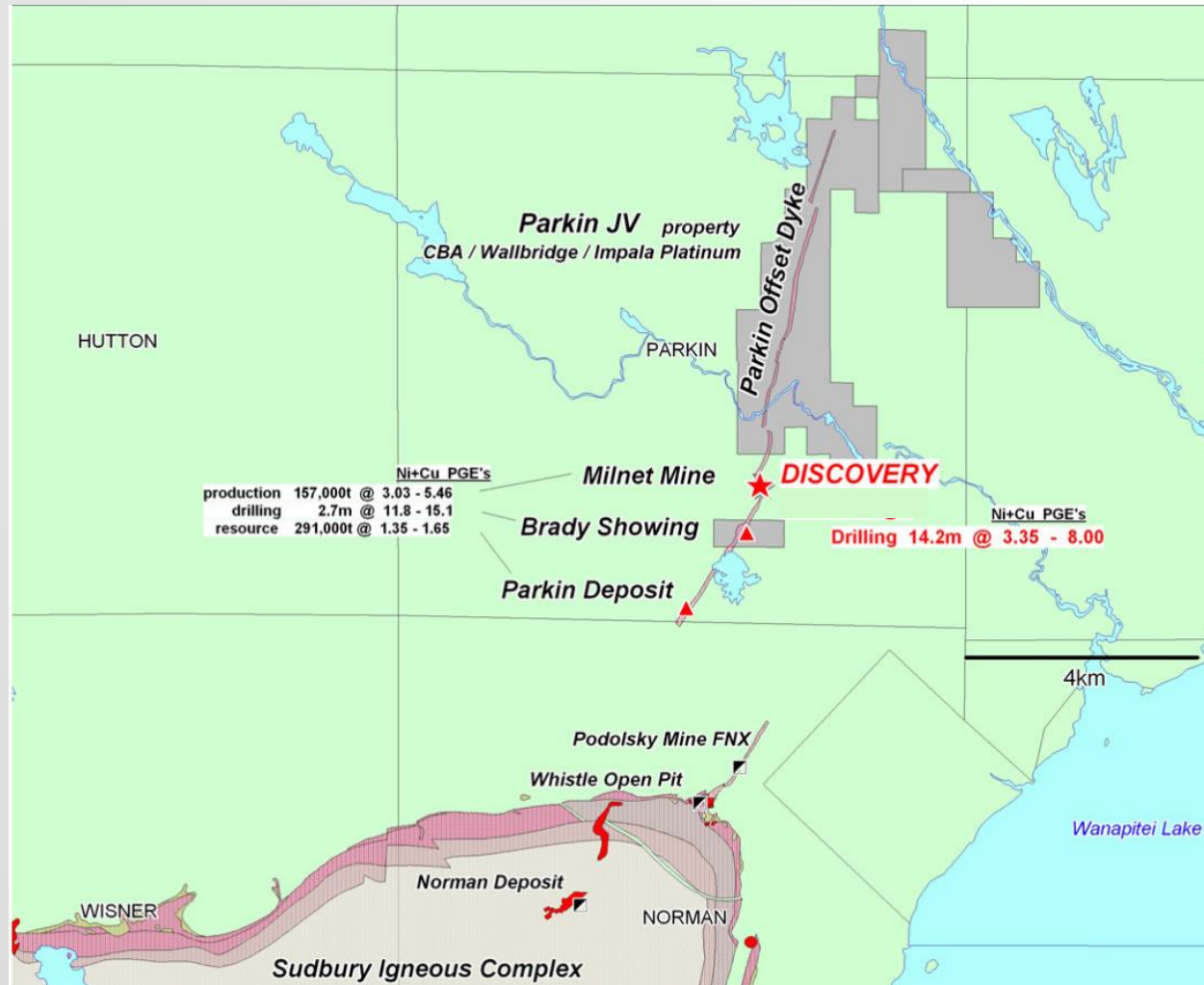
Northwest Campbell Zone Trenches



Map of western trenches

Bjorkman, Katarina 2011
Geotechnical Report

PARKIN OFFSET DYKE



Parkin Offset Dyke – Metavolcanics adjacent to Parkin Offset dyke as high as **44 g/tonne Au over 1.4 m at 543 meters**, shallow BHUTEM and **deep RIM anomalies** identified in Sudbury Basin Offset dyke, **11.2% Cu, 9.2 g/t Pt, 4.3 g/t Pd and 1.6 g/t Au over 2.7 m** at surface (channel sample of Brady Showing). Open at depth and along strike.

Champion Bear owns a 50% Carried Interest in claims, converts to loan payable from production revenue in Parkin Offset Dyke under JV and retain right to become Operator directing all future activity

- 2,018 acres land position at 50% working interest
- 118 holes drilled to date, 1st drilled in 1983
- Road infrastructure in place
- RIM, BHUTEM, EM Surveys

Expected cost to Pre-Feasibility Study \$11 to \$12MM

- Average drill depth = 800 meters
- Local Project Manager – Todd McCracken P.Geo WSP Canada Inc.)

Current estimated dimensions of mineralization

- Height = Surface to 800 meters, open at depth
- Length = 300 meters, open on strike N and S
- Width = 50 meters



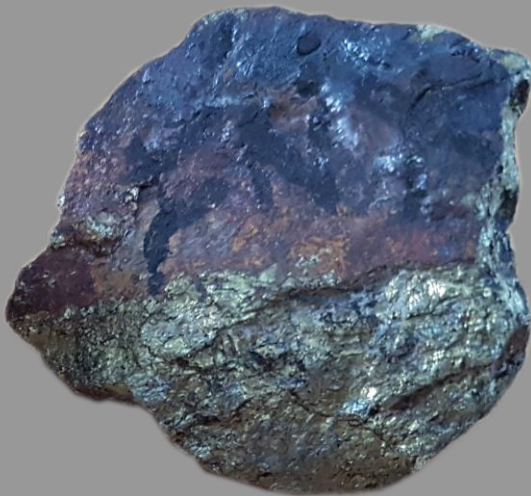
PARKIN OFFSET DYKE SAMPLES



Parkin Offset



FNX Podolsky Mine



PARKIN TWP. OFFSET
1.3% Ni, 2.0% Cu, 1.0% Co,
0.6 opt Pt, 0.8 opt Au

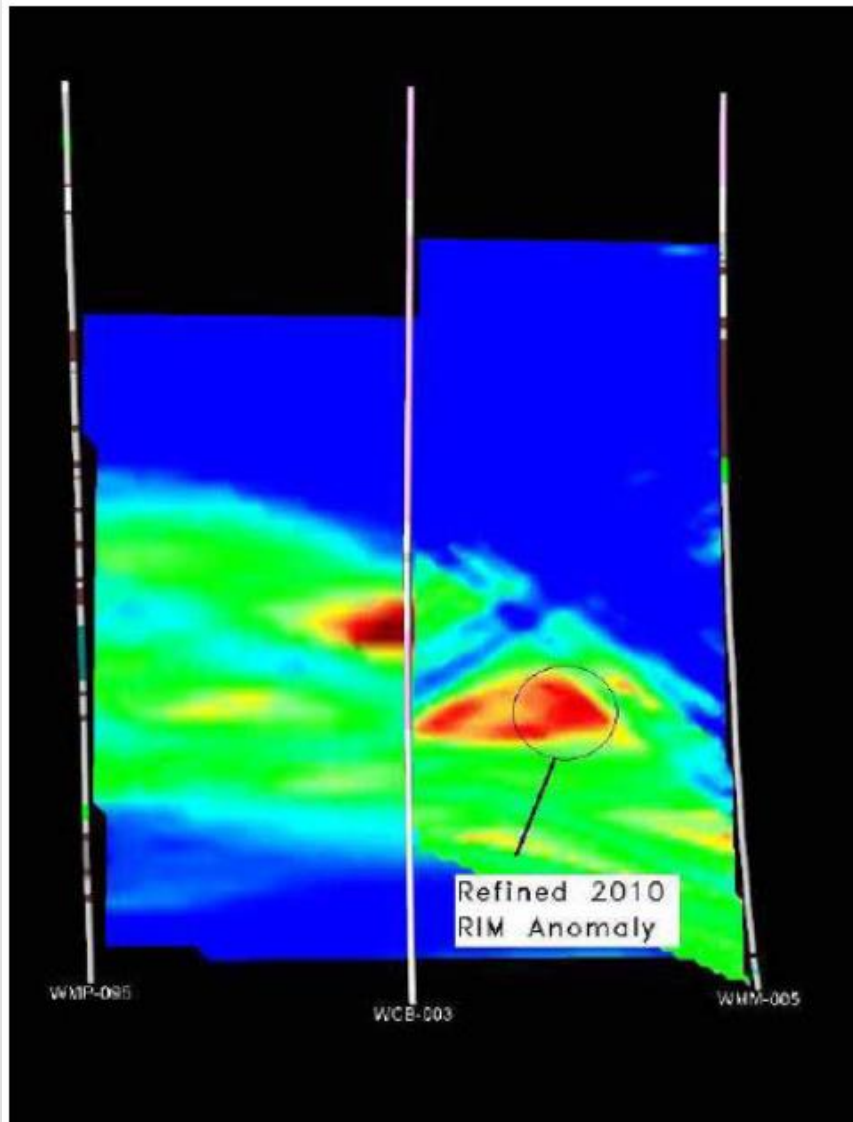


PDAC TORONTO 2017



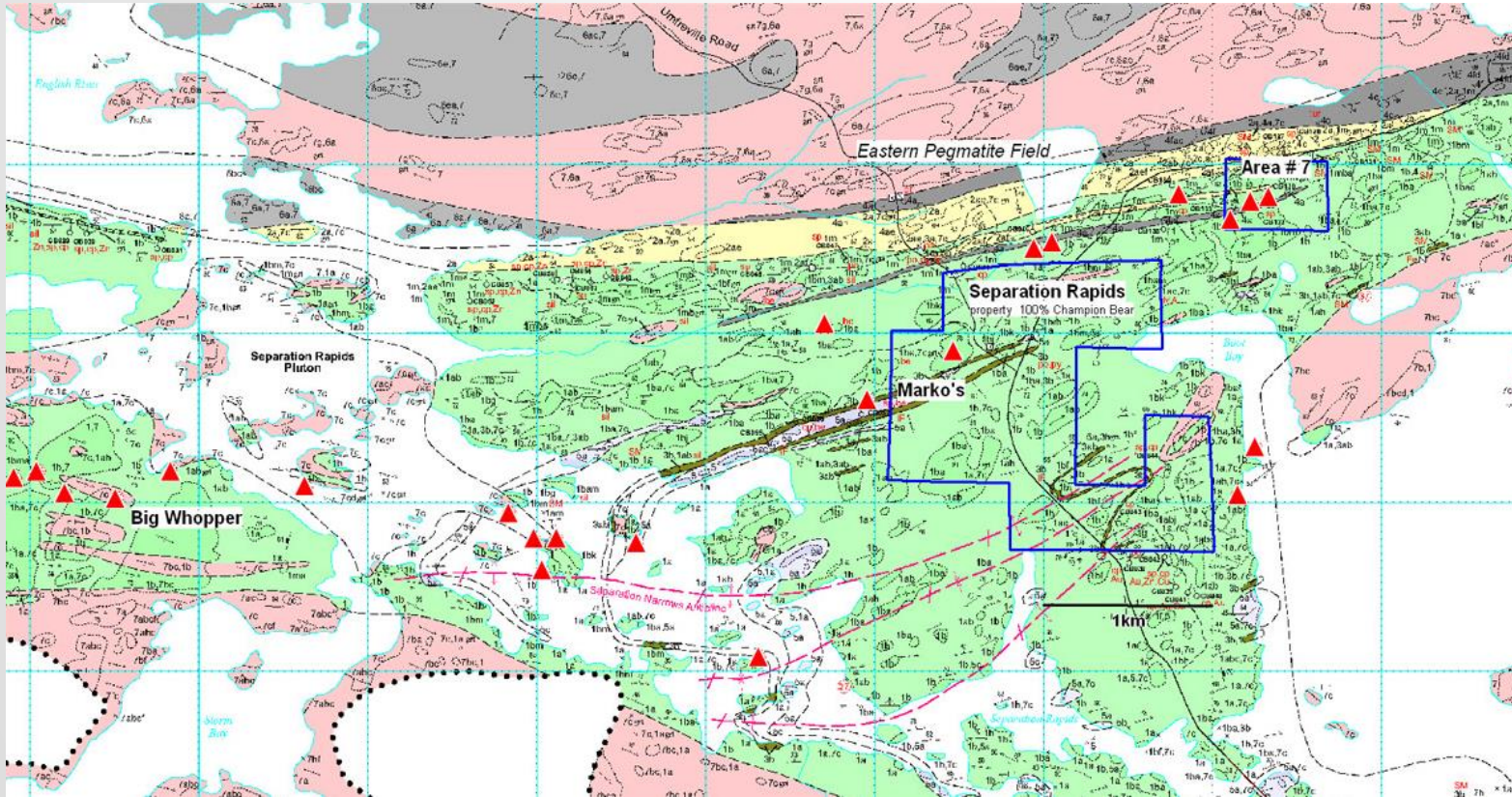
March 2017

PARKIN UNTESTED RIM ANOMALY



- 2010 radiowave imaging (RIM) Survey between boreholes generated a well defined RIM anomaly that is not yet tested by the JV operator
- Similar to FNX Podolsky Mine RIM anomaly 4 to 6 kms south on offset dyke trend (conversation with Terry MacGibbon)

SEPARATION RAPIDS



Separation Rapids – Petalite pegmatite. Marko's zone directly east of Big Whopper deposit, area surface length measured up to 170 meters and drilling results up to **1% Ta₂O₅, 0.097% Cs₂O, 0.77% Rb₂O, 1.26% SnO₂ and 0.43% Li₂O** - **Highest recorded Tantalum sample in Ontario (Ontario Geological Survey 2000)**. Open at depth and along strike.

- 672 acre land position at 100% working interest
- 22 holes drilled to date, Marko's 1st drilled by Champion Bear in 1997
- Road infrastructure in place

Current estimated cost to Pre-Feasibility Study \$3 to \$5MM

- Average drill depth = 300 meters
- Local Project Manager – S. Siemieniuk P.Geo (Superior Exploration Ltd.)

Current estimated dimensions of mineralization

- Height = Surface to 250 meters, open at depth
- Length = 200 meters, open on strike NE and SW
- Width = 8 meters



PROJECT SUMMARIES



- **Funded, Operated 2017 Projects currently underway**

- **Plomp Farm** – Hemlo-like folded and sheared barite-enriched quartz-sericite-sulfide schist unit averaging 15m thick with consistent mineralization. 2 OGS duplicate samples assayed **1.72 and 2.98 ounces/t Au** representing a potentially previously unrecognized style of mineralization. Pilot drill program along with re-sampling and re-interpreting 51,000 meters of historical core is underway with the goal to generate the Project's first Resource Assessment in 2017. 100% Interest in claims.
- **Eagle Rock** – Multi-phase sanukitoid intrusive complex host to Cu-Ni-PGE mineralization. Drill assays up to to **2.19 g/t PGE+Au and 0.92% Cu+Ni over 5 meters** (part of wider interval grading 1.70 g/t TPM+Au and 0.87% Cu+Ni over 13 meters) on potential 12 km trend for Campbell Zone sulfides. Planned drilling of up to 2,000 meters followed by Resource Assessment in 2017. 100% Interest in claims.

- **Funded, Non-Operated 2017 Project**

- **Parkin Offset Dyke** – Metavolcanics within or adjacent to Parkin Offset dyke as high as **44 g/tonne Au over 1.4 m** at 543 meters, shallow BHUTEM and deep RIM anomalies identified in Sudbury Basin Offset dyke, **11.2% Cu, 9.2 g/t Pt, 4.3 g/t Pd and 1.6 g/t Au over 2.7 m** at surface (channel sample of Brady Showing). Non-operated JV activity throughout 2017. 50% Carried Interest in claims converts to loan payable from production revenue.

- **Currently Unfunded, Operated Project**

- **Separation Rapids** – Petalite pegmatite zone directly east of Big Whopper deposit, area surface widths measured up to 170 meters and drilling results up to **1% Ta₂O₅, 0.097% Cs₂O, 0.77% Rb₂O, 1.26% SnO₂ and 0.43% Li₂O - Highest recorded Tantalum sample in Ontario (Ontario Geological Survey 2000)**. 100% Interest in claims.
- Target Metals – **Au, Pt, Pd, Cu, Ni, Ag, Ta**
- Over \$20MM spent to date on all properties, advancing toward Resource Assessments on Plomp Farm and Eagle Rock
- All claims in mining friendly, conflict free jurisdiction of Ontario, Canada with ~200 years of mining history.
- 2017 activity funded by December 2016 equity raise



CHAMPION BEAR OVERVIEW

Champion Bear is a Canadian mineral exploration and development company focused exclusively on the historically prospective mining regions of Ontario, Canada. The company's primary target is platinum group metals and to a lesser extent gold, poly-metallic and rare metal deposits. Champion Bear's aim is to create extraordinary shareholder value through discovery, acquisition and joint ventures. Although Champion Bear has traditionally been involved in the early stages of mining projects, the company has a seasoned staff and Board able to bring mining prospects into commercial operation. Champion Bear was incorporated in 1987 and is publicly listed on the Toronto Venture Exchange.



CHAMPION BEAR RESOURCES LTD. (TSX.V:CBA)

For further information about Champion Bear please contact:

Richard Kantor, President and Director

Email: richard.cbear@shaw.ca

Phone: +1.403.229.9522

Todd Dillabough, Director

Email: todd.dillabough@gmail.com

Phone: +1.587.229.5999

Website: www.ChampionBear.com