

CHAMPION BEAR RESOURCES



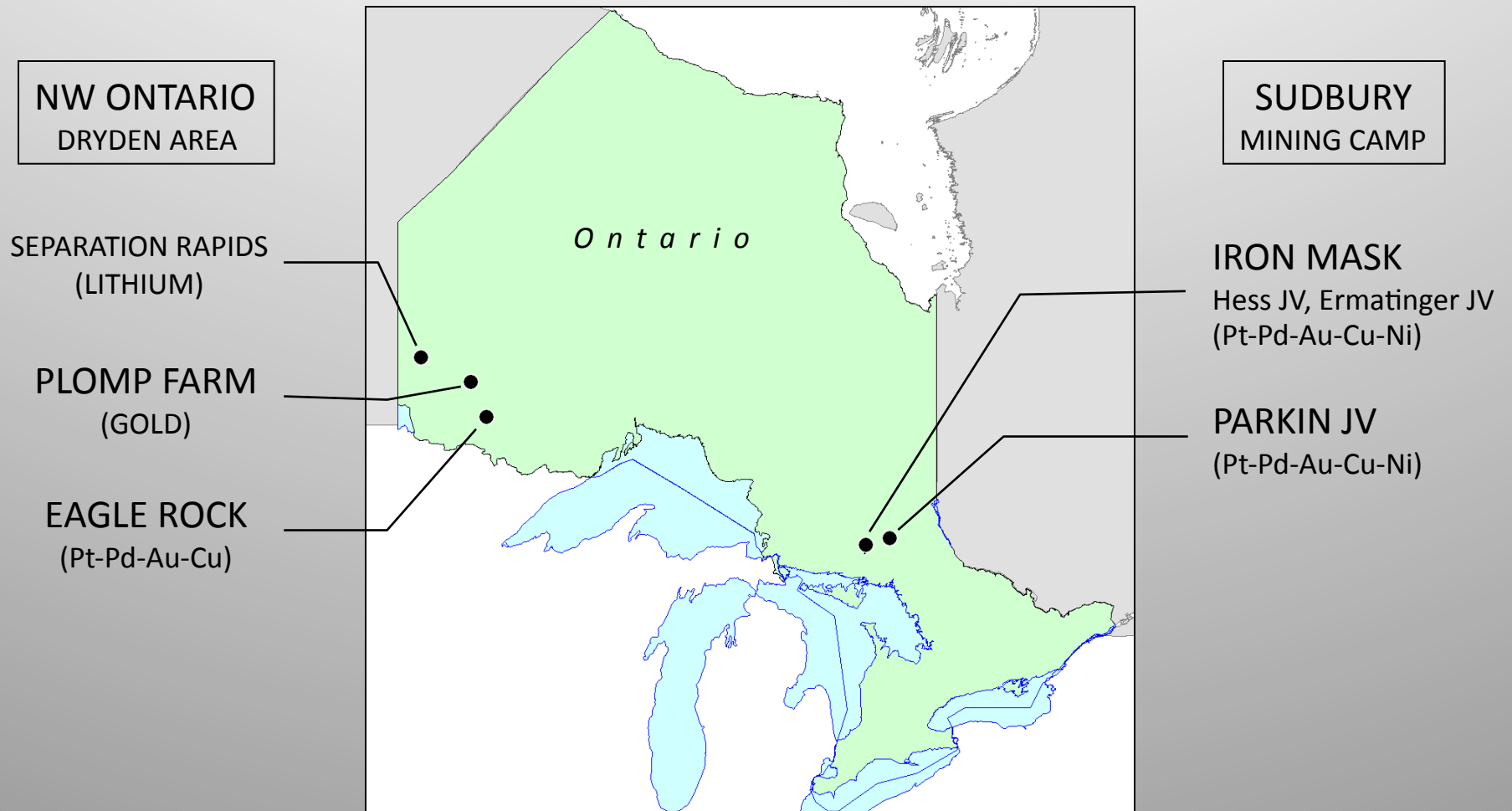
EAGLE ROCK PGM-Cu PROJECT NW ONTARIO



Exploration Update

February 2011

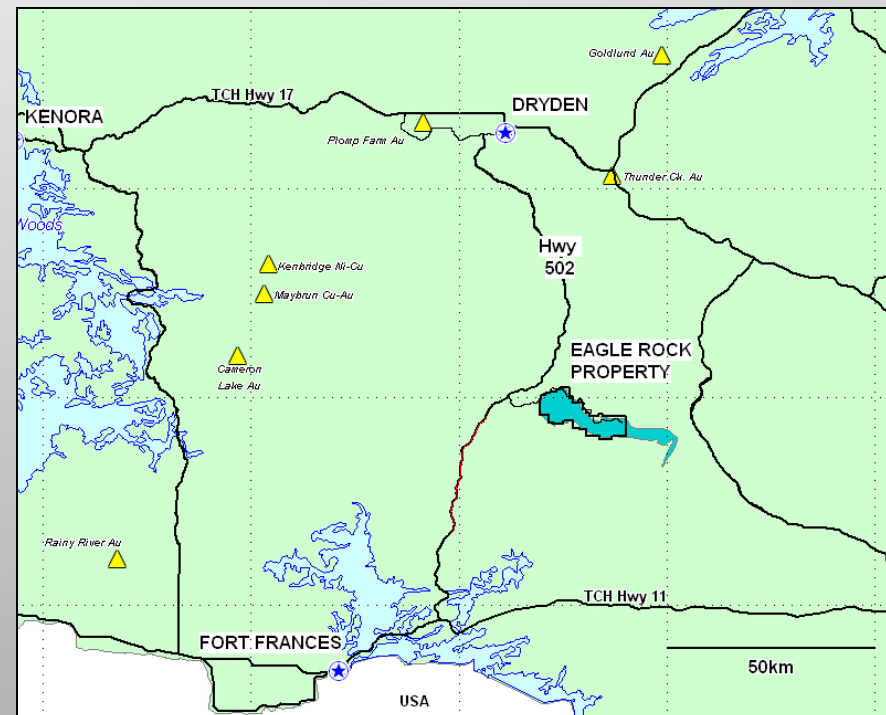
CHAMPION BEAR PROJECTS



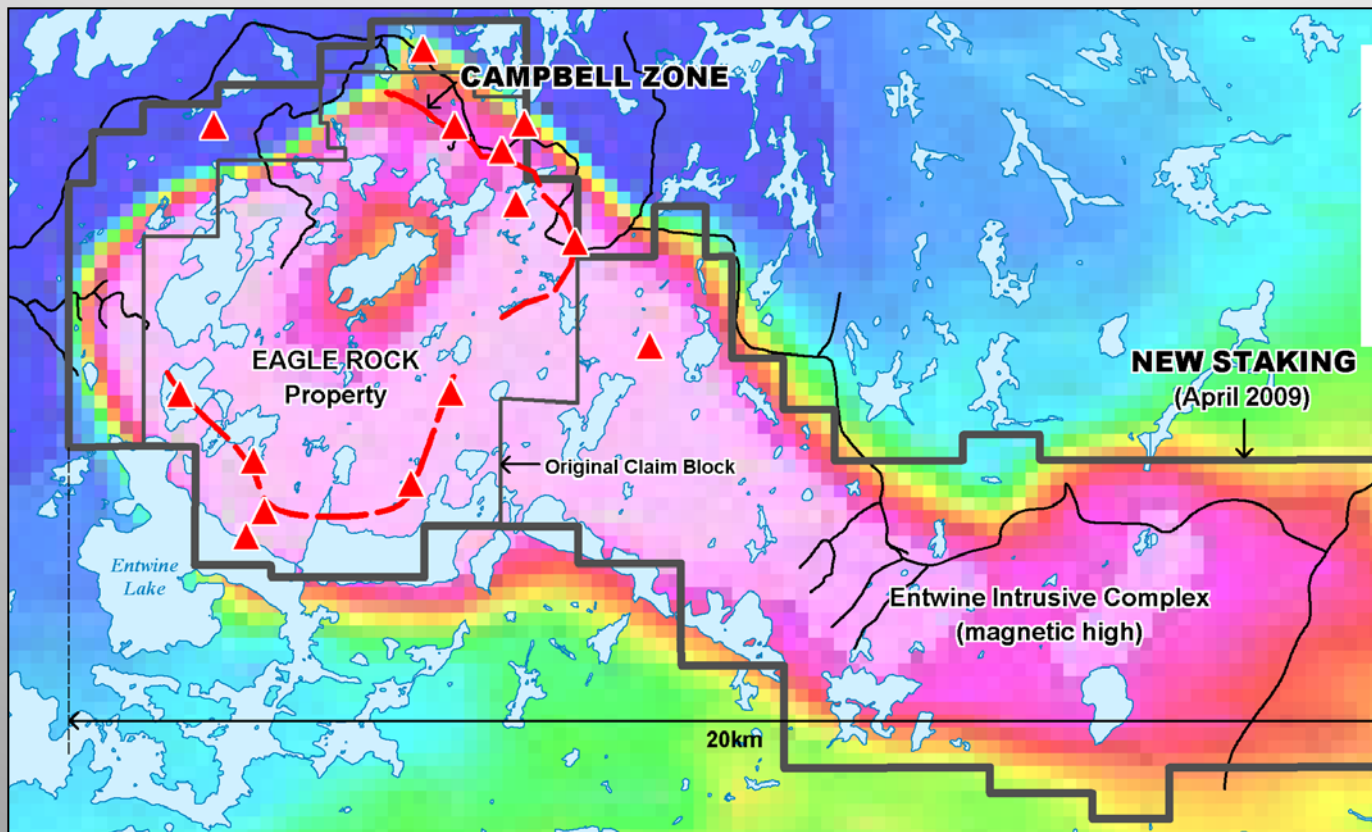
EAGLE ROCK – PROJECT HIGHLIGHTS



- **100% owned by Champion Bear**
- **Campbell Zone**
open pit potential
open along strike and at depth
81 holes, 12,850m
relatively Pt- and Cu-rich
- **Resource Estimate planned**
- **Exploration Potential**
7km trend with numerous sulphide
showings on strike -- showings have
no drilling, no geophysics, and only
minor prospecting;
very large multi-phase intrusion



EAGLE ROCK PROJECT



PROPERTY

Large 20 x 6km, 100% CBA

GEOLOGY

Large polyphase Intrusive with several sulphide showings.

Reef-type Cu – Pt – Pd -- Au

STAGE

Advanced Drilling and Grass Roots

CAMPBELL ZONE

Mineralized for 1km at surface
Drilling continues to define horizon down-dip for possible open pit.
2009 Drill Results Very Good.

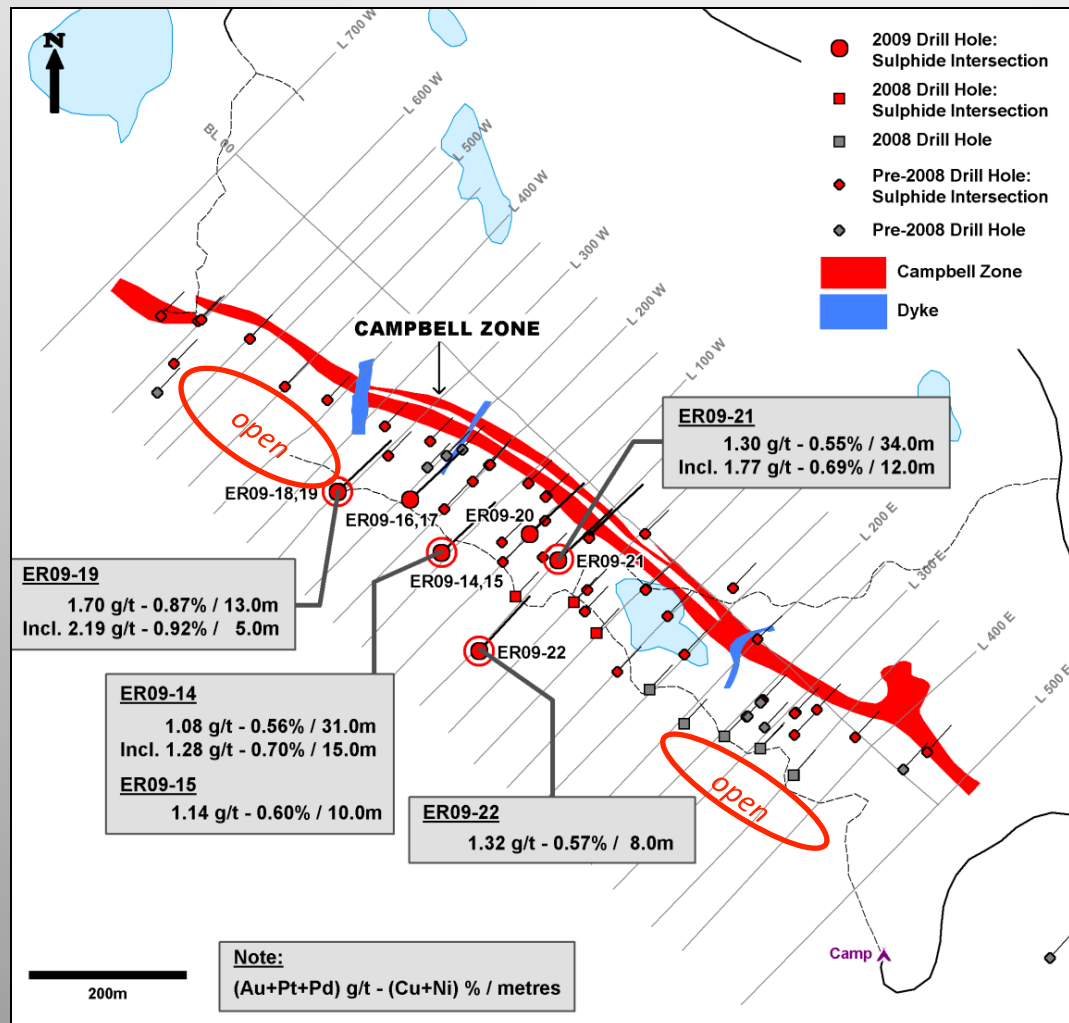
OTHER TARGETS

- 1- Western Lobe sulphide trend
- 2 - Unexplored Eastern "Tail"

PLANS

- 1 - Advance Campbell Zone with Drilling and Resource Calculation
- 2 - Evaluate Other Targets for additional metal-rich Zones in anticipation of Drilling

CAMPBELL ZONE PGM-CU



2009 Drill Results

CAMPBELL ZONE

Sulphide zone exposed for > 1km
Continuous, predictable horizon

STAGE

Advanced-stage Drilling

SULPHIDE ZONE

Low-sulphide, High Metal Tenor
Typical of Pt-Pd reef-type deposits
Very Good Metallurgy

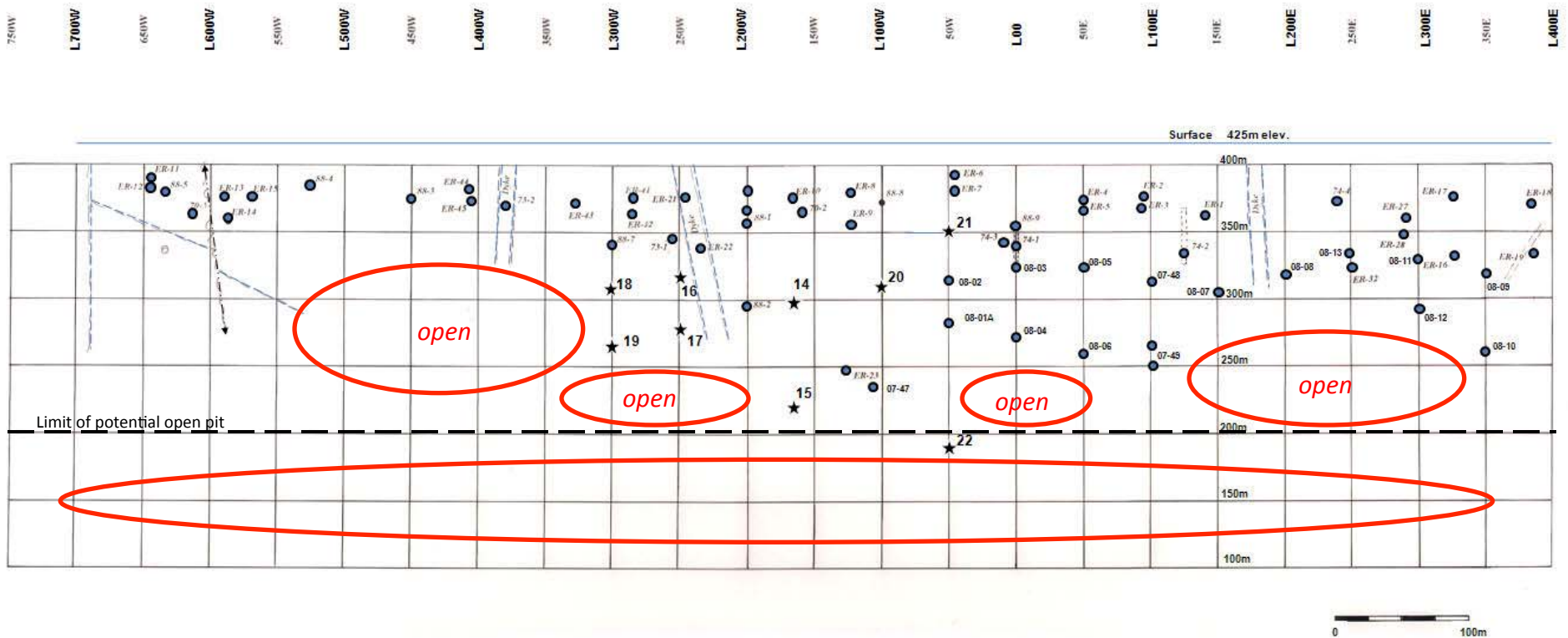
2009 RESULTS

Extended Zone to NW for >200m
Highest Grade Interval to date
ER09-19 – 2.19g/t over 5m

PLANS

Drill NW strike extension
Drill SE strike extension

CAMPBELL ZONE PGM-CU



Idealized Vertical Longitudinal Projection

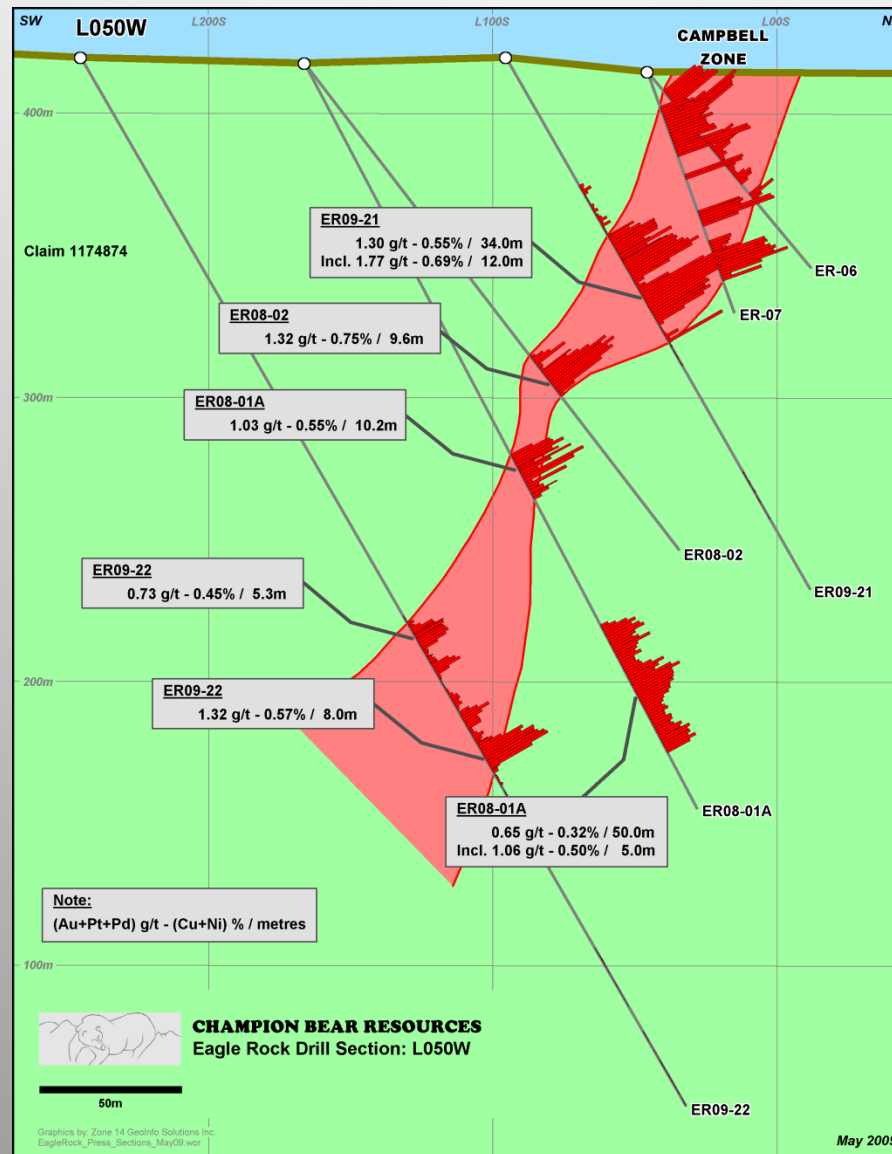
LONGITUDINAL SECTION

Historic Drilling defined the shallow part of the Zone

Recent Drilling has extended the Zone from 75m to >200m below surface

Planned Drilling will target the open untested portion of the Zone in anticipation of a Resource Estimation.

CENTRAL AREA – L050W



CENTRAL AREA

Broad zone of Sulphides
Possibly 2 parallel horizons
Continuous from surface to depth

SULPHIDE ZONE

Good correlation between sulphide abundance and grade of Cu and PGE's

2009 RESULTS – Section L050W

ER09-21

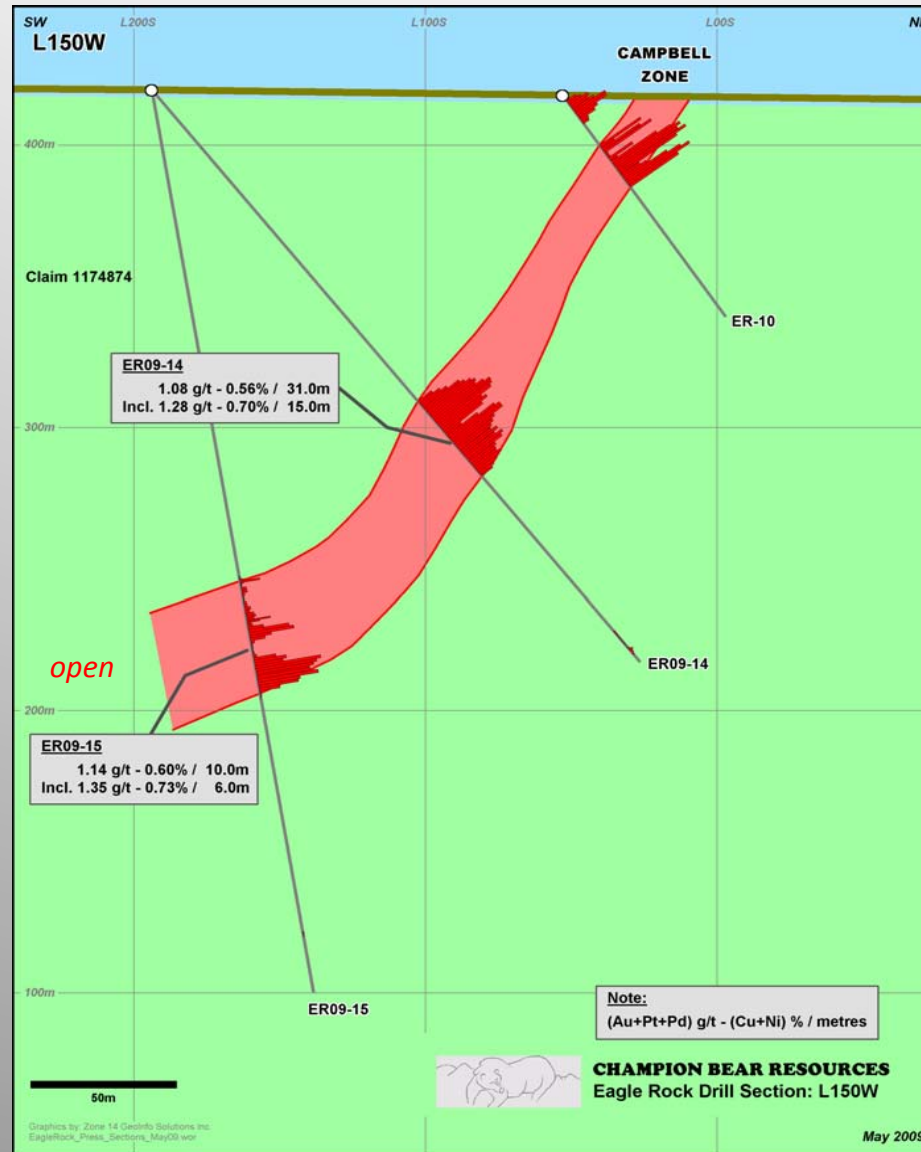
In-fill hole targeted a key gap in the historic drilling
Confirmed grade, width, and continuity of mineralization in shallow part of Zone

ER09-22

Follow-up hole targeted down-dip mineralization
Extended Zone to depth of open pit
Hit 2 modest Zones

2009 Drill Results

NORTHWEST AREA – L150W



NORTHWEST AREA

2009 drilling targeted this open and under-explored portion of the Zone

2009 RESULTS – Section L150W

ER09-14

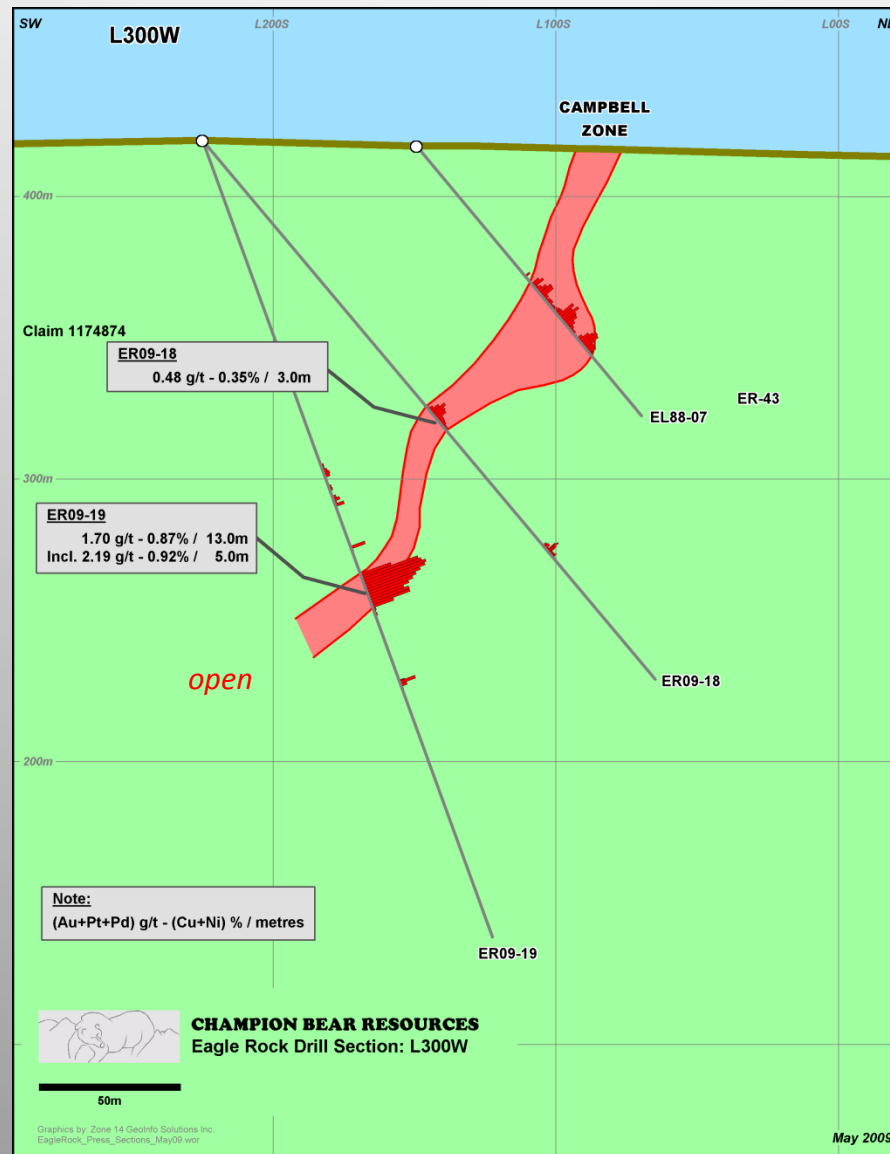
Aggressive step-out hole intersected broad zone of > 1g/t hosting a higher grade portion over 15m

ER09-15

10m intersection extends the Zone down-dip for 100m



NORTHWEST AREA – L300W



NORTHWEST AREA

Continuous Zone of Sulphides
Open and Under-explored.

2009 RESULTS – Section L300W

ER09-19

Uniform Zone of very good sulphide
Best grade intersection drilled on
Property to date

Open down-dip and along strike

Indicates mineralizing system is
capable of producing higher grade
material

2011 PLANS

Continue to extend the Zone along
strike and down-dip of ER09-19

2009 Drill Results

EAGLE ROCK PROJECT, NW ONTARIO



METALS

- High Value Precious Metals – Platinum, Palladium, Gold, Copper, silver; increasing demand, increasing value

OWNERSHIP

- 100% Champion Bear
no underlying agreements or royalties

CAMPBELL ZONE

- Continuous, predictable reef-type sulphide zone
high metal tenor; open along strike and at depth

RESOURCES

- Resource Estimation planned for Campbell Zone
drilling in anticipation of Resource Estimation

EXPLORATION POTENTIAL

- Campbell Zone trend extends for 7km
hosts several sulphide showings, no drilling, no geophysics
remainder of intrusion is virtually unexplored