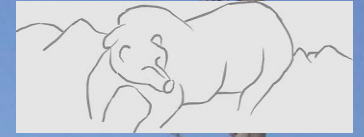


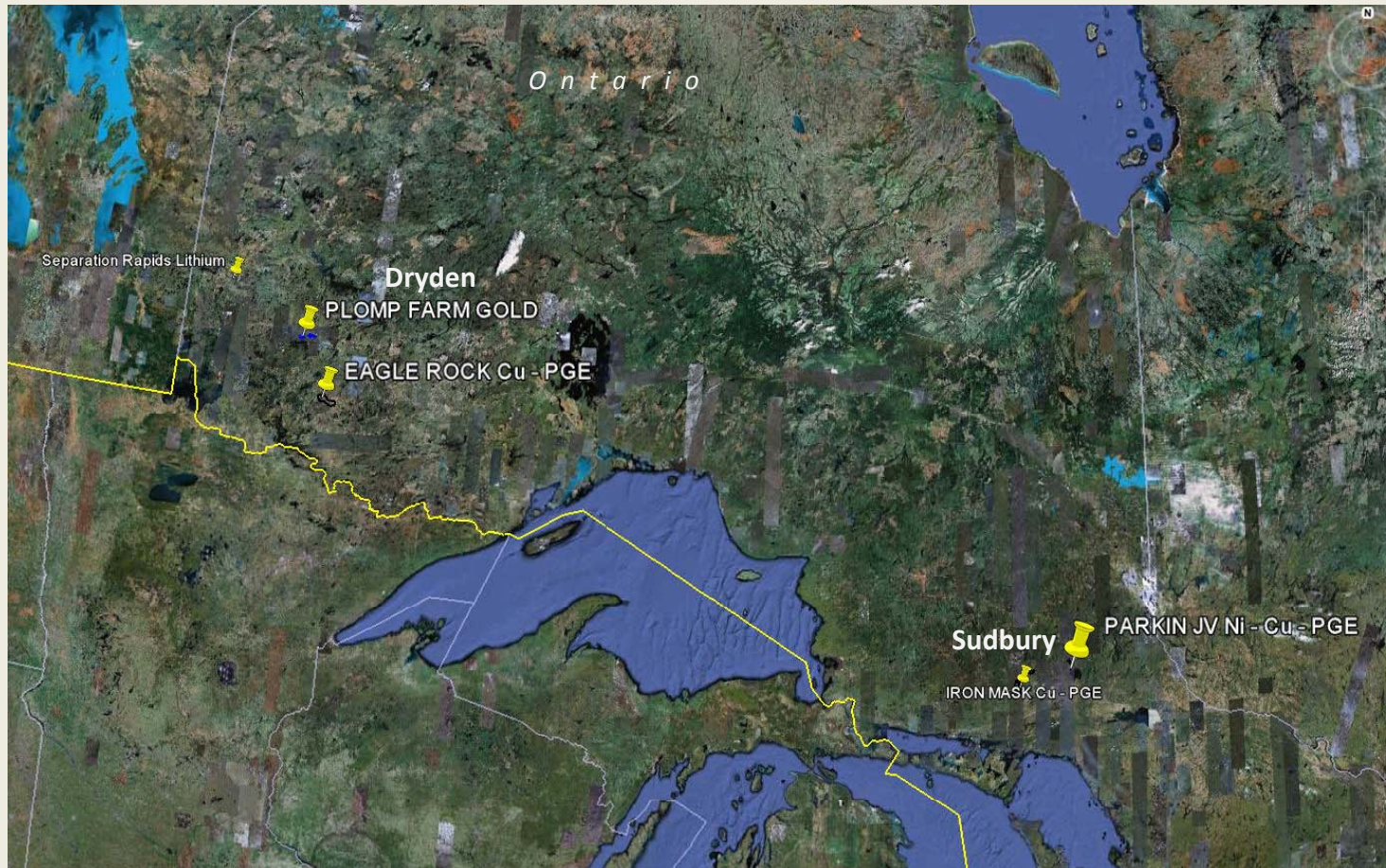
CHAMPION BEAR RESOURCES



EXPLORING ADVANCED STAGE PRECIOUS METAL PROJECTS IN ONTARIO

ONTARIO PROJECTS

Precious Metal Focused



PROPERTY

3 Advanced Projects

EAGLE ROCK -- Dryden

Large, 100% held
Campbell Zone Cu- Au -Pt-Pd
Drill ready targets

PARKIN JV -- Sudbury

JV With Wallbridge & Impala Pt
High Value Sudbury Footwall
New Discovery on strike
Ongoing Exploration by Wallbridge
Impala continues to fund
Carried interest to Production

PLOMP FARM -- Dryden

Large, 100% held
Hemlo-type, Au-rich VMS
Drill ready targets

*Polymetallic Deposits containing High Value Metals
Gold – Platinum – Palladium – Nickel - Copper*



EAGLE ROCK Cu – Au – Pt - Pd

Dryden, Ontario

PROPERTY

Large 20 x 6km, 100% CBA

GEOLOGY

Large polyphase Intrusive with several sulphide showings.
Reef-type Cu – Au – Pt - Pd

STAGE

Advanced Drilling and Grass Roots

CAMPBELL ZONE

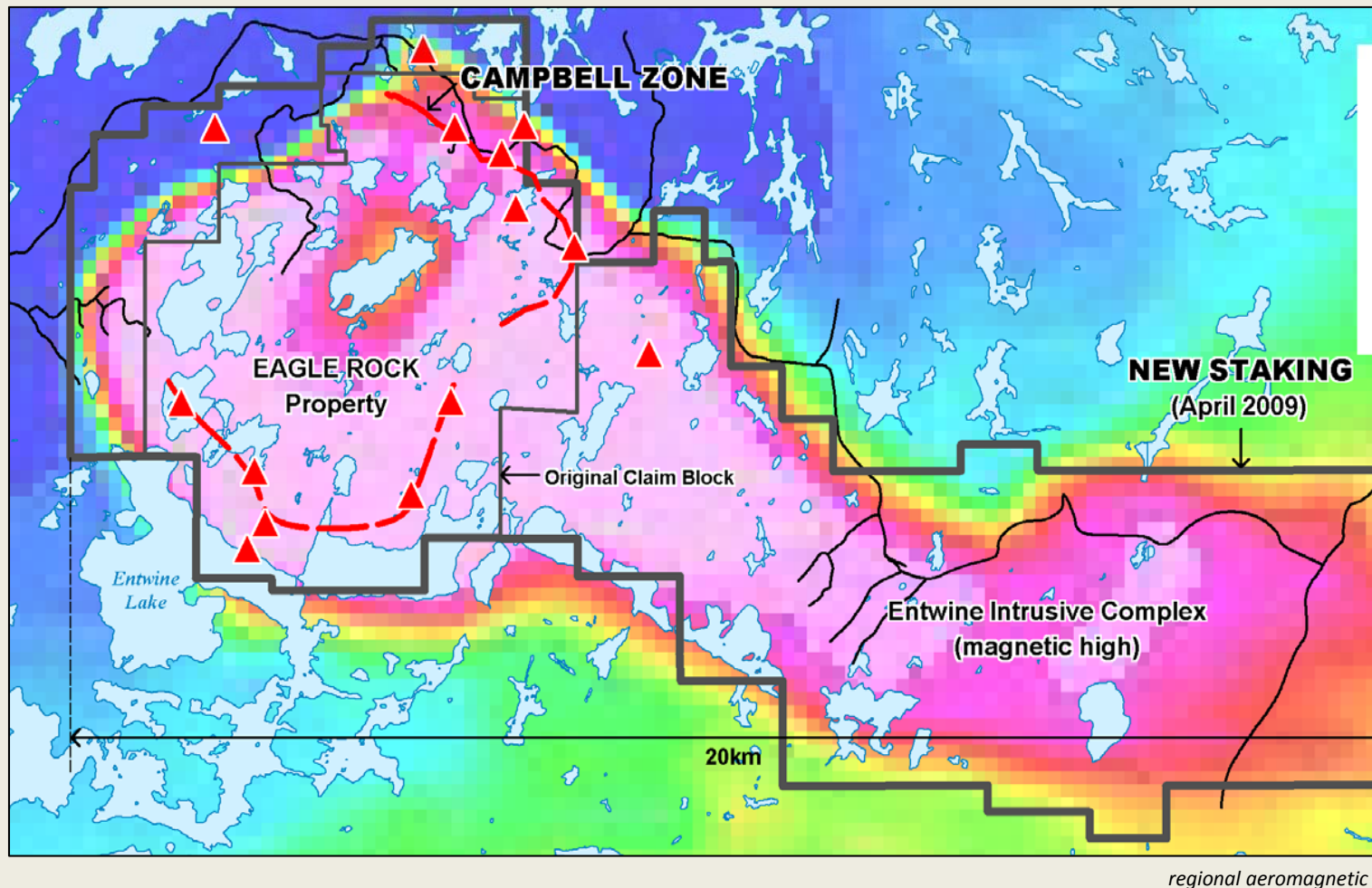
Mineralized for 1km at surface
Drilling continues to define horizon down-dip for possible open pit.
2009 Drill Results Very Good.

OTHER TARGETS

- 1- Western Lobe sulphide trend
- 2 - Unexplored Eastern "Tail"

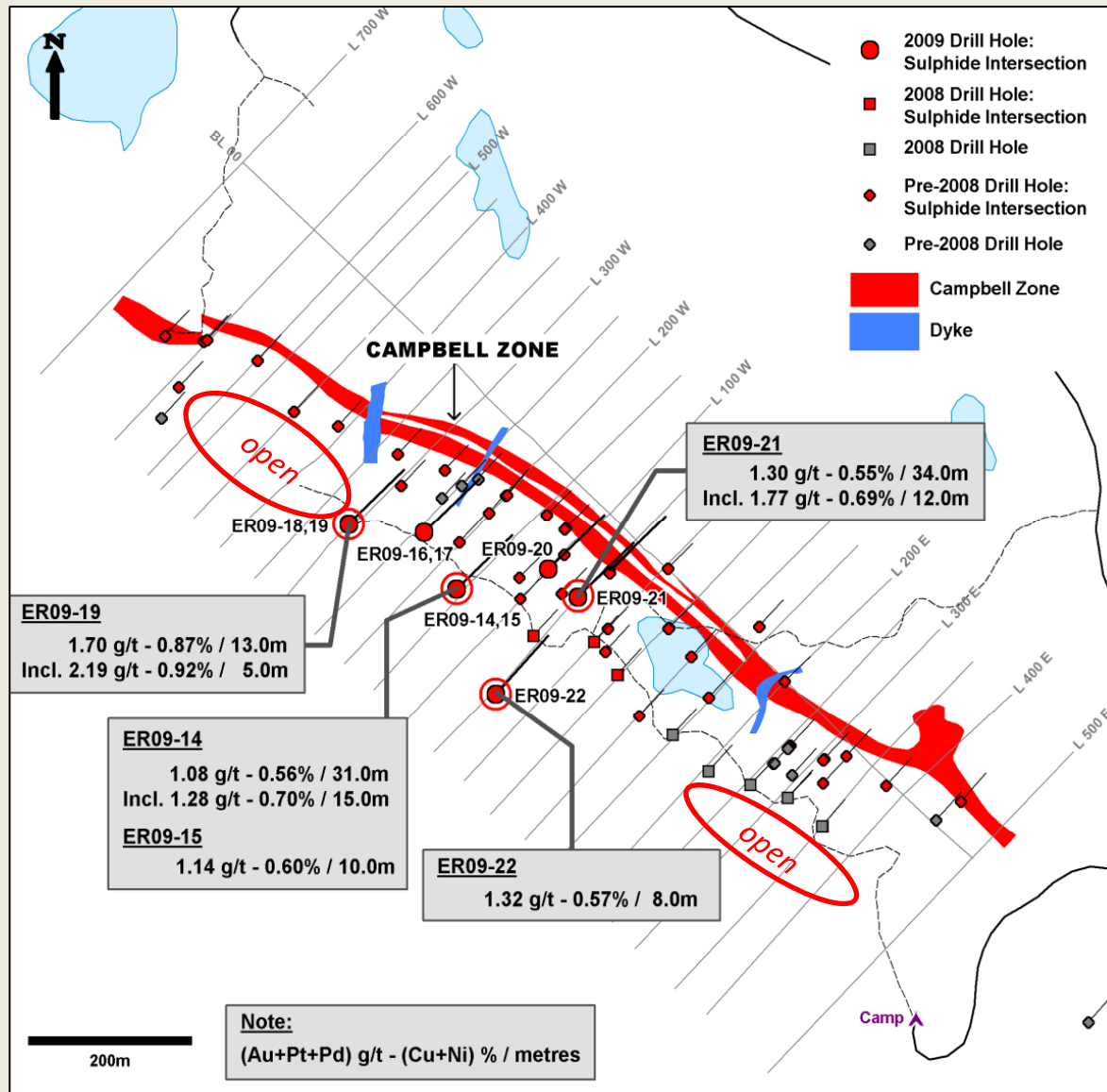
2010 PLANS

- 1 - Advance Campbell Zone with Drilling and possible Resource Estimation
- 2 - Evaluate Other Targets for additional metal-rich Zones in anticipation of Drilling



CAMPBELL ZONE Cu-PGE

Eagle Rock Property



2009 Drill Results

CAMPBELL ZONE

Sulphide zone exposed for > 1km
Continuous, predictable horizon

STAGE

Advanced-stage Drilling

SULPHIDE ZONE

Low-sulphide, High Metal Tenor
Typical of Pt-Pd reef-type deposits
Very Good Metallurgy

2009 RESULTS

Extended Zone to NW for >200m
Best Grade Intersection to date
ER09-19 – 2.19g/t over 5m

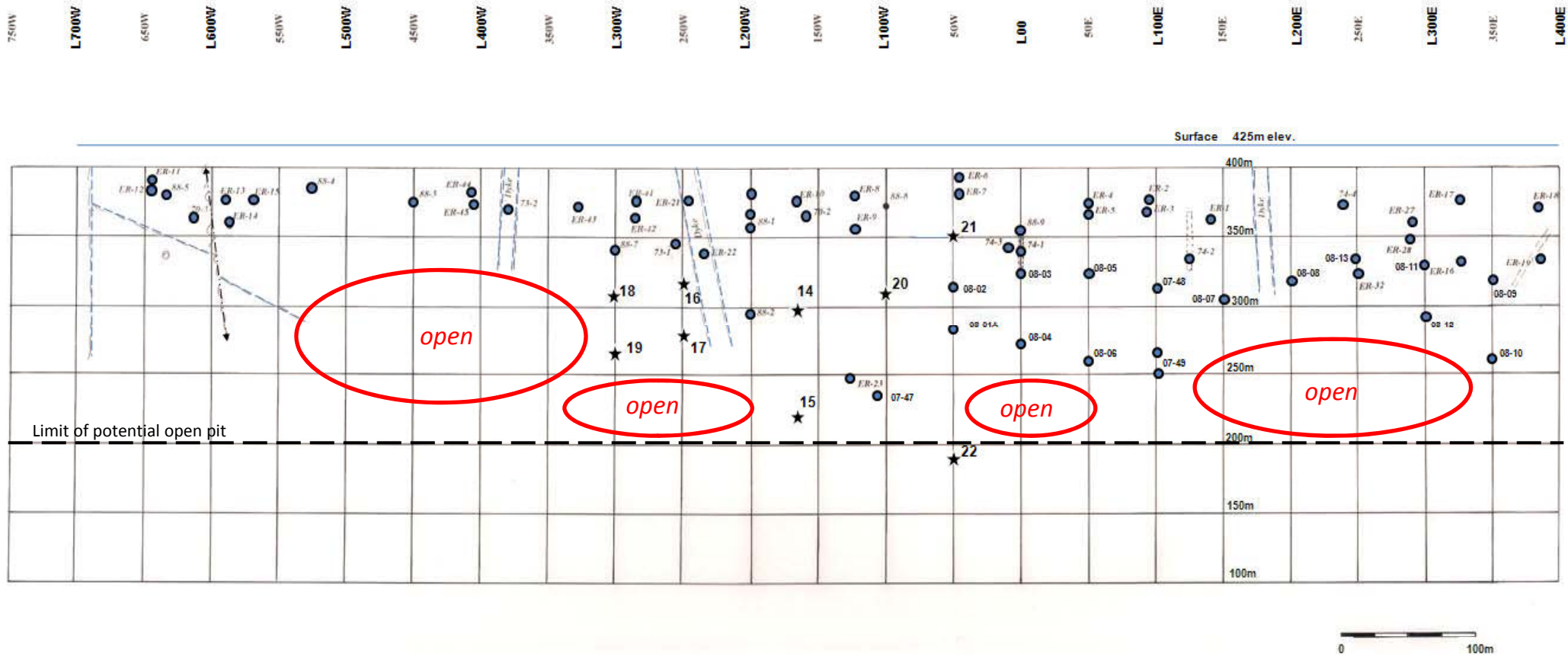
2010 PLANS

Drill NW strike extension
Drill SE strike extension



CAMPBELL ZONE Cu-PGE

Eagle Rock Property



Idealized Vertical Longitudinal Projection

LONGITUDINAL SECTION

Historic Drilling defined the shallow part of the Zone

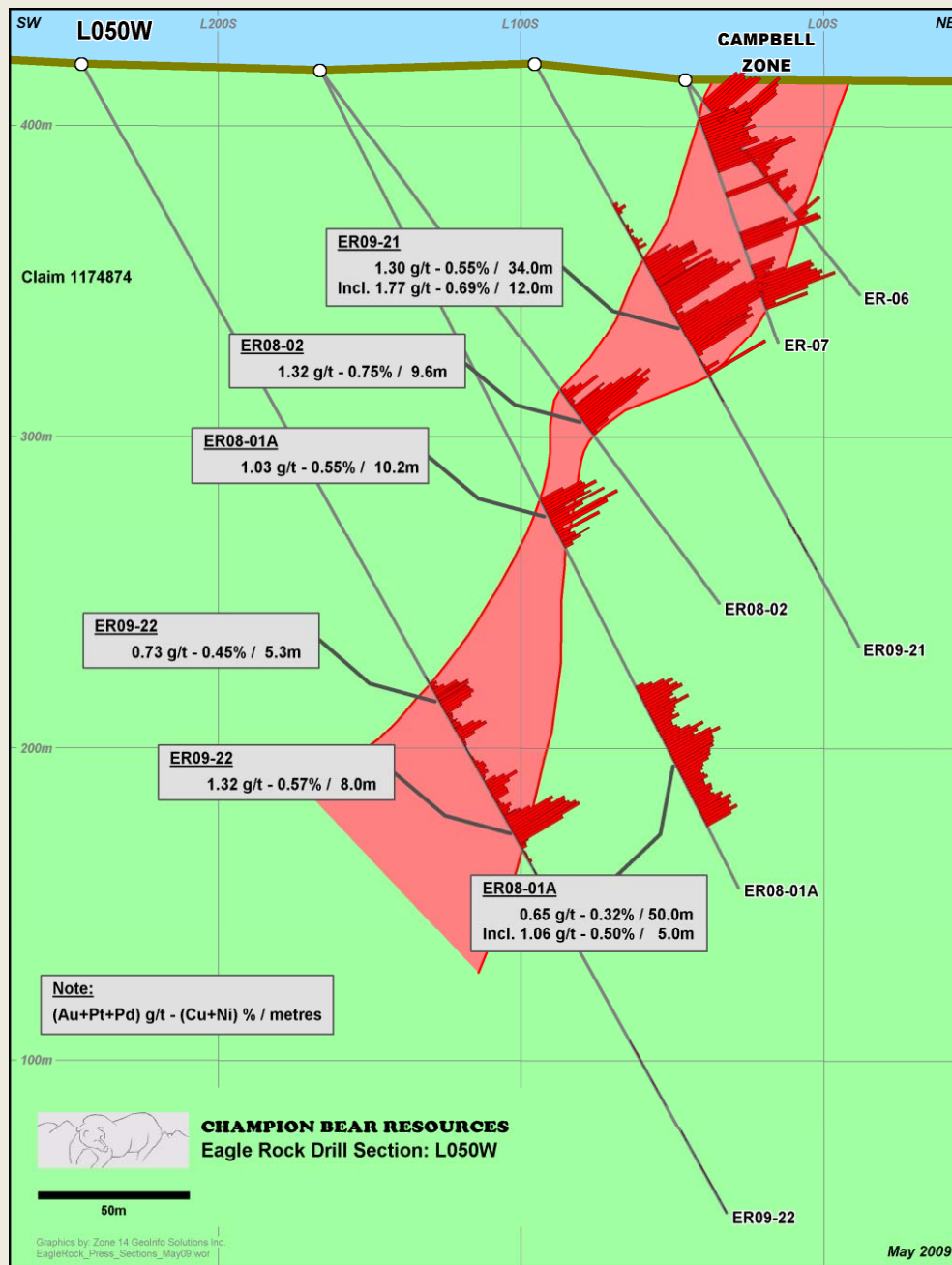
Recent Drilling has extended the Zone from 75m to >200m below surface

2010 Drilling will target the open untested portion of the Zone in anticipation of a Resource Estimation.



CENTRAL AREA

Campbell Zone, Eagle Rock Property



CENTRAL AREA

Broad zone of Sulphides
Possibly 2 parallel horizons
Continuous from surface to depth

SULPHIDE ZONE

Good correlation between sulphide abundance and grade of Cu and PGE's

2009 RESULTS – Section L050W

ER09-21

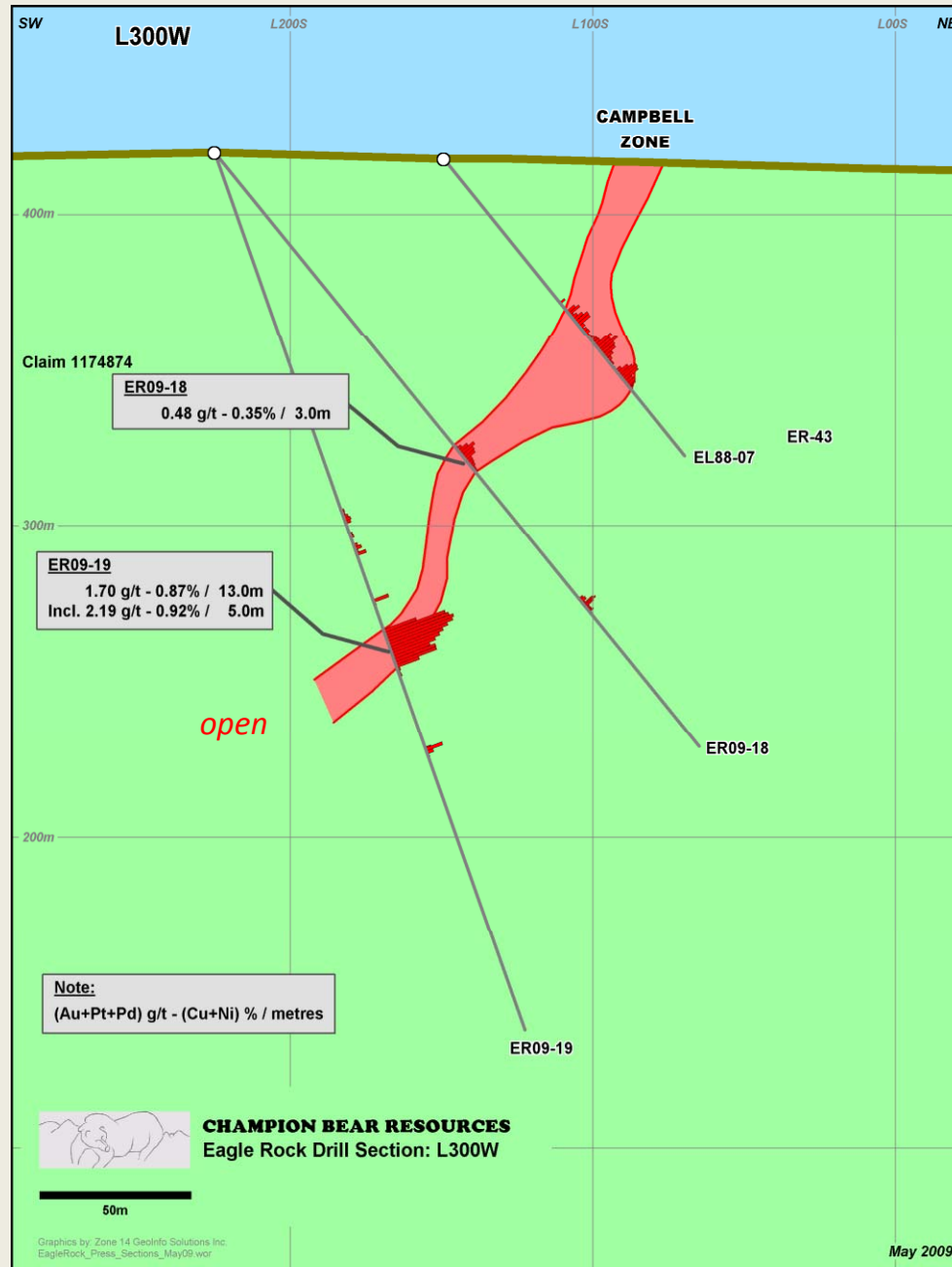
In-fill hole targeted a key gap in the historic drilling
Confirmed grade, width, and continuity of mineralization in shallow part of Zone

ER09-22

Follow-up hole targeted down-dip mineralization
Extended Zone to depth of open pit
Hit 2 modest Zones

NORTHWEST AREA

Campbell Zone, Eagle Rock Property



NORTHWEST AREA

Continuous Zone of Sulphides
Open and Under-explored.

2009 RESULTS – Section L300W

ER09-19

Uniform Zone of very good sulphide
Best grade intersection drilled on
Property to date

Open down-dip and along strike

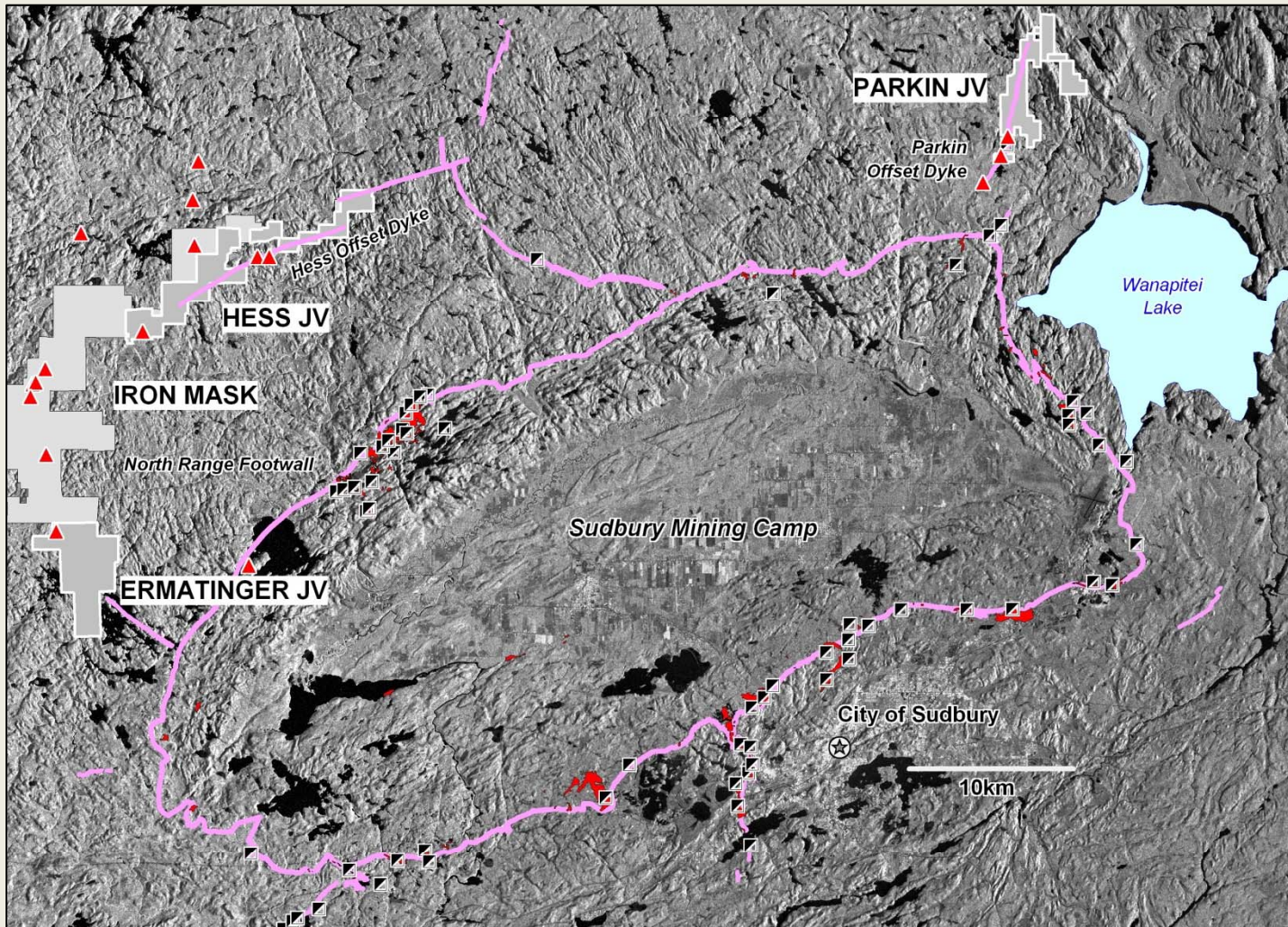
Indicates mineralizing system is
capable of producing higher grade
material

2010 PLANS

Continue to extend the Zone along
strike and down-dip of ER09-19

SUDBURY AREA PROJECTS

Sudbury Mining Camp



Sudbury Footwall Projects

PROPERTY

Four large properties covering favourable Sudbury Footwall geological environment
Joint Ventures with strategic partners

GEOLOGY

Sudbury Mining Camp
Properties cover portions of 3 Offset Dykes and zones of Sudbury Breccia

High Value Sudbury Footwall Ore

PARKIN JV

Active – New Discovery by Wallbridge on adjacent property

NORTH RANGE FOOTWALL

IRON MASK – several occurrences, possible extension of Hess Offset Dyke

HESS JV – actively being explored by JV partner Wallbridge

ERMANTINGER JV – possible extension of Ministic Offset Dyke

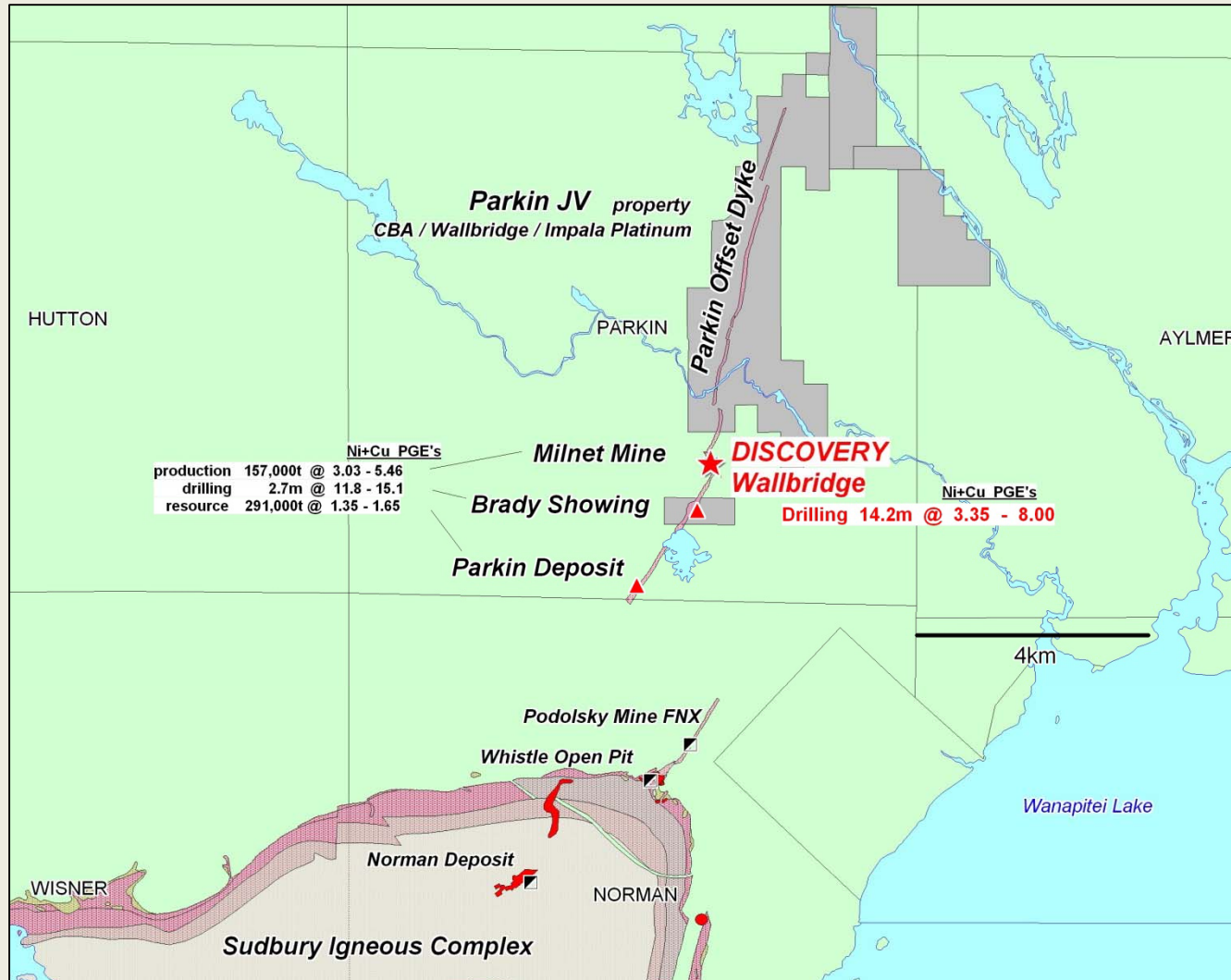
2010 PLANS

Continue Drilling at Parkin
Continue exploration on North Range properties



PARKIN JV Ni-Cu-PGE

Sudbury Mining Camp



Parkin Offset Dyke, NE Sudbury Mining Camp

PROPERTY

Large 9 x 3km,
Optioned to Wallbridge and Impala
Platinum of South Africa
Includes Brady Property
Carried interest to Production

GEOLOGY

Sudbury Mining Camp
Parkin Offset Dyke
Near FNX Podolsky Mine

High Value Sudbury Footwall Ore

BRADY PROPERTY

Hosts Brady Showing
Covers strategic portion of Offset Dyke
Overlies important conductive trend

2009 RESULTS

New Discover by Wallbridge on
adjacent Claim

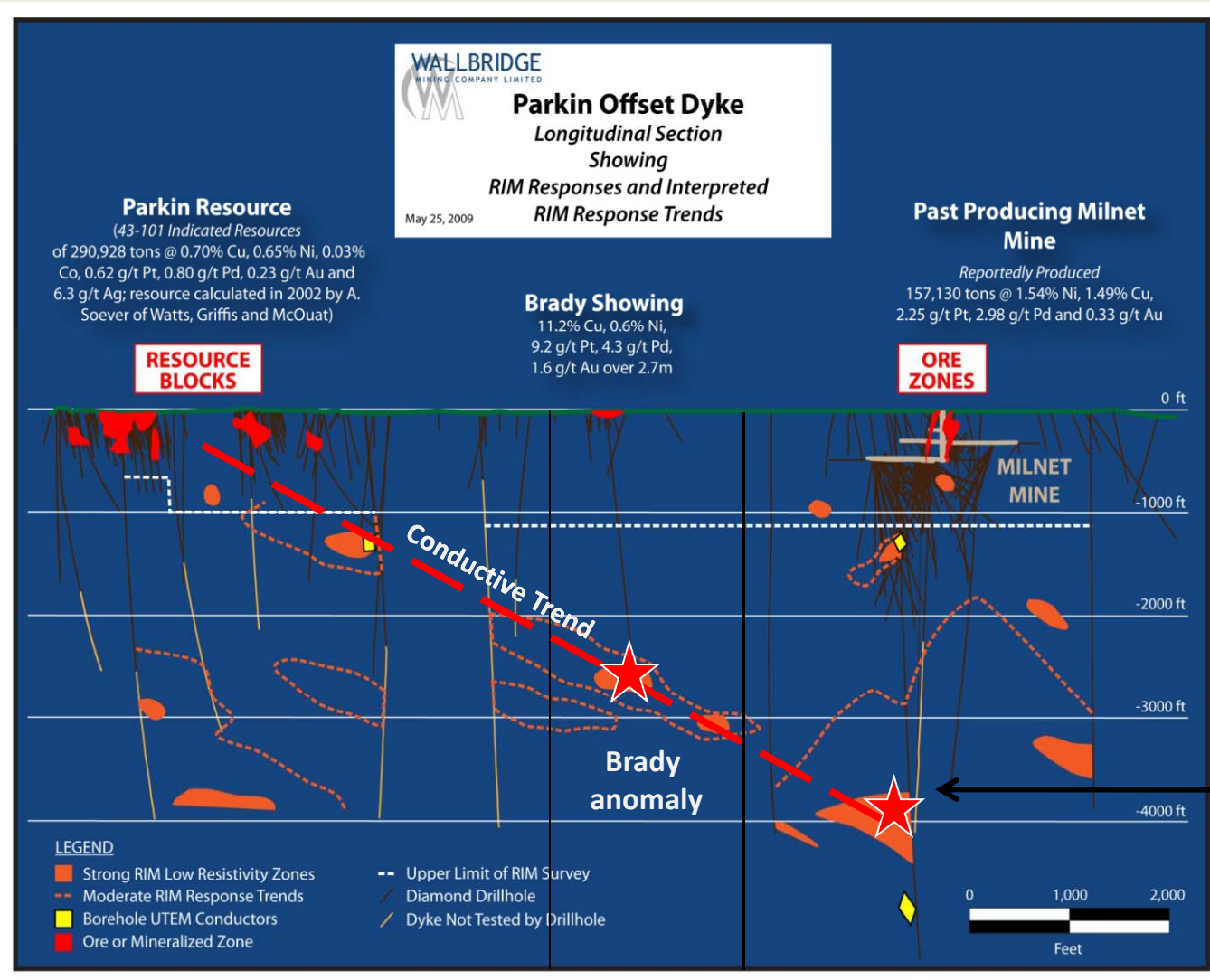
2010 PLANS

Continue Drilling at Brady property
Lies up-plunge of new Discovery



PARKIN JV Ni-Cu-PGE

Sudbury, Ontario



Parkin Offset Dyke Longitudinal Section

2009 RESULTS: NEW DISCOVERY by WALLBRIDGE

lies along conductive trend down-plunge of Brady Property.

High Value Metal content of both
Precious and Base Metals

Typical Sudbury Footwall Ore

2010 PLANS

Wallbridge continues to Drill New
Discovery

Plan to Drill at Brady in early 2010

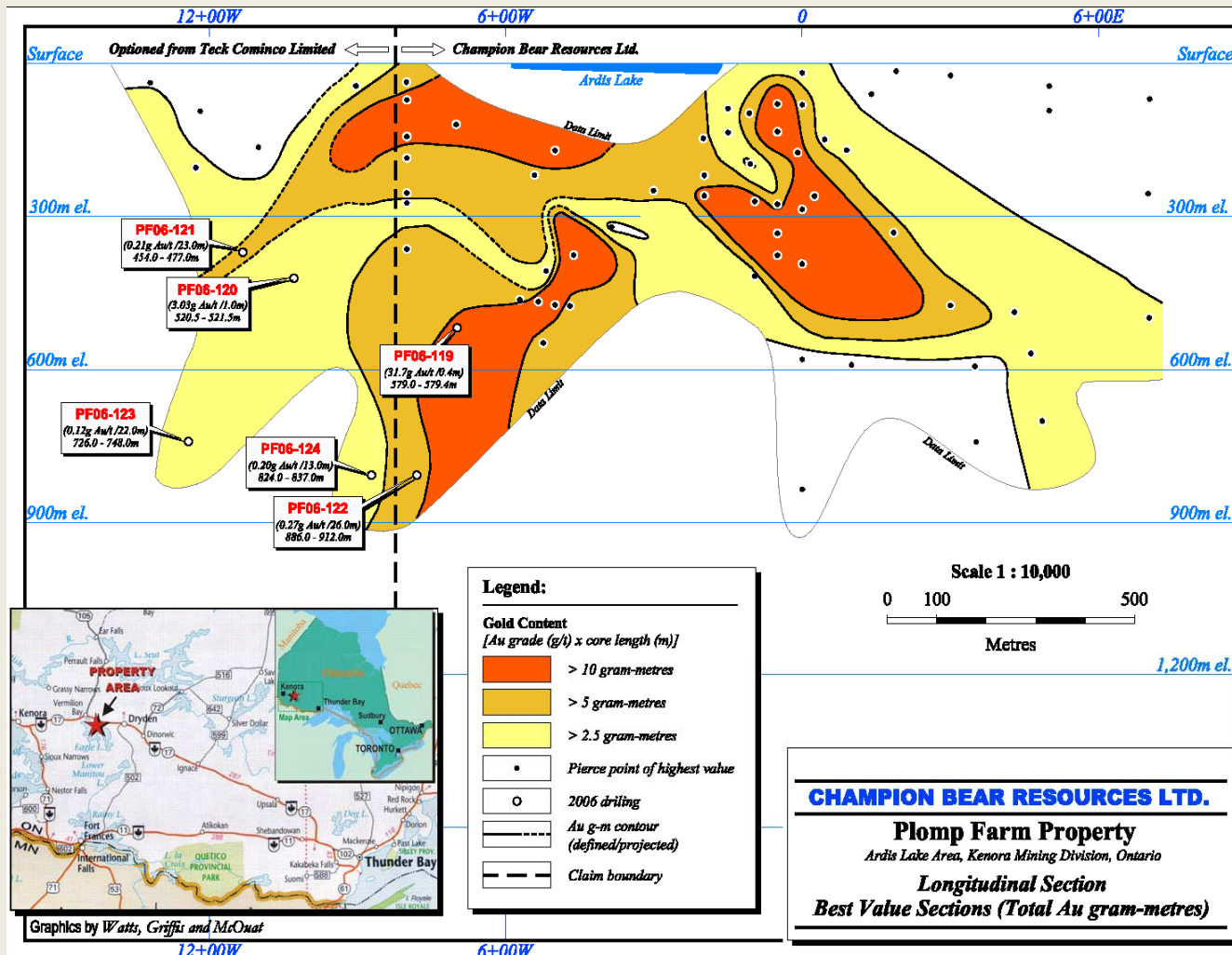
New Discovery By Wallbridge

2.57% Cu – 0.78% Ni
4.0g/t Au – 1.5g/t Pt – 2.5g/t Pd / 14.2m



PLOMP FARM Au

Dryden, Ontario



Plomp Farm Main Zone, Vertical Longitudinal Projection

PROPERTY

Covers most of 20km long gold trend west of Dryden,
 100% owned
 Includes Plomp Farm Main Zone
 Lies west of Thunder Creek Gold

GEOLOGY

Similar to Hemlo-style – pyritic Gold,
 Au-rich VMS associated with felsic volcanics

PREVIOUS RESULTS

Drilling defines possible plunging Gold shoots

2010 PLANS

Continue to Drill Test extensions of the Gold shoots



PLANS for 2010

Ontario Projects

EAGLE ROCK -- Cu-PGE

- **Campbell Zone Drilling (3000-5000m)**
 - continue to extend sulphide mineralization to the northwest and down-dip of high grade intersection ER09-19
 - define extent of Zone in un-drilled, open areas to the southeast and downdip of mineralized intersections
- **Western Lobe Sulphide Trend and Eastern “Tail” of Complex**
 - *High-Resolution Airborne Magnetics (HRAM)* survey to identify sulphide/mag high trend
 - *Target Generation for Drilling* – prospecting, geological mapping, ground geophysical surveys

PARKIN JV -- Ni-Cu-PGE

- **Brady Zone Drilling**
 - continue to test up-plunge of New Discovery by Wallbridge
 - 100% carried interest by Joint Venture – Impala-funded

PLOMP FARM -- Au

- **Main Zone Drilling (2000-3000m)**
 - continue to down-plunge extensions of the Gold Zones

Ontario-Focused

High Value Precious Metal-Focused

